

À des fins de recherche uniquement

Anticorps Monoclonal anti-FUCA1

Numéro de catalogue: 67251-1-Ig



Informations de base

Numéro de catalogue: 67251-1-Ig	Numéro d'acquisition GenBank: BC017338	Méthode de purification: Purification par protéine A
Taille: 150ul , Concentration: 2100 µg/ml by Nanodrop and 1000 µg/ml by Bradford method using BSA as the standard;	Identification du gène (NCBI): 2517	CloneNo.: 1G5C5
Hôte: Mouse	Nom complet: fucosidase, alpha-L- 1, tissu	Dilutions recommandées: WB 1:2000-1:10000 IHC 1:250-1:1000 IF 1:200-1:800
Isotype: IgG2b	MW calculé 461 aa, 53 kDa	
Immunogen Catalog Number: AG9638	MW observés: 50-56 kDa	

Applications

Applications testées:

IF, IHC, WB, ELISA

Spécificité de l'espèce:

Humain, souris

Remarque-IHC: il est suggéré de démasquer l'antigène avec un tampon de TE buffer pH 9.0; (*) À défaut, 'le démasquage de l'antigène peut être effectué avec un tampon citrate pH 6,0.

Contrôles positifs:

WB : cellules HepG2, cellules HEK-293, cellules K-562, cellules NIH/3T3

IHC : tissu de cancer du foie humain,

IF : tissu de cancer du foie humain,

Informations générales

FUCA1(a-L-Fucosidase) is a lysosomal glycosidase which is ubiquitous in eukaryotic cells. This enzyme is usually found as a soluble component of the lysosome and functions as an acid hydrolase in the degradation of numerous and diverse fucoglycoconjugates. The mammalian a-L-fucosidases are relatively large, multisubunit glycoproteins which exist in multiple molecular isoforms. This enzyme may have a role in sperm-egg interactions in the reproductive tract of the female rat. There is a precursor 54 kDa form of rat sperm fucosidase which is processed to a mature 52 kDa form of the enzyme (PMID:8836125). This protein from rat epididymis is a tetramer of 210-220 kDa, made up by two pairs of subunits of 47 and 60 kDa, and the one from human seminal plasma exists in different oligomeric forms, that is, as a dimer, as a tetramer, and as a hexamer made up of a single subunit of 56-57 kDa (PMID:16736526).

Stockage

Stockage:

Stocker à -20 °C

Tampon de stockage:

PBS avec azoture de sodium à 0,02 % et glycérol à 50 % pH 7,3

L'aliquotage n'est pas nécessaire pour le stockage à -20C

*** Les 20ul contiennent 0,1% de BSA.

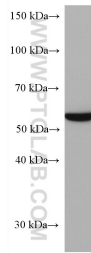
For technical support and original validation data for this product please contact:

T: 1 (888) 4PTGLAB (1-888-478-4522) (toll free in USA), or 1(312) 455-8498 (outside USA)

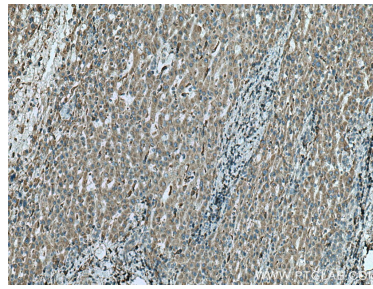
E: proteintech@ptglab.com
W: ptglab.com

This product is exclusively available under Proteintech Group brand and is not available to purchase from any other manufacturer.

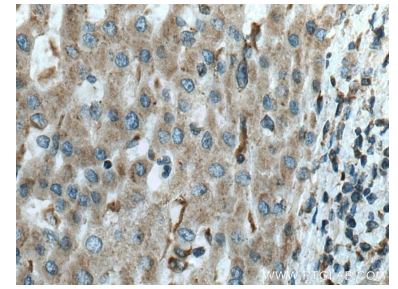
Données de validation sélectionnées



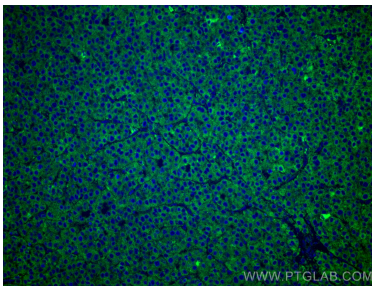
HepG2 cells were subjected to SDS PAGE followed by western blot with 67251-1-Ig (FUCA1 antibody) at dilution of 1:5000 incubated at room temperature for 1.5 hours.



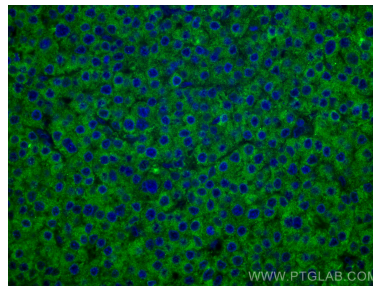
Immunohistochemical analysis of paraffin-embedded human liver cancer tissue slide using 67251-1-Ig (FUCA1 antibody) at dilution of 1:500 (under 10x lens). Heat mediated antigen retrieval with Tris-EDTA buffer (pH 9.0).



Immunohistochemical analysis of paraffin-embedded human liver cancer tissue slide using 67251-1-Ig (FUCA1 antibody) at dilution of 1:500 (under 40x lens). Heat mediated antigen retrieval with Tris-EDTA buffer (pH 9.0).



Immunofluorescent analysis of (4% PFA) fixed human liver cancer tissue using FUCA1 antibody (67251-1-Ig, Clone: 1G5C5) at dilution of 1:400 and CoraLite®488-Conjugated AffiniPure Goat Anti-Mouse IgG(H+L).



Immunofluorescent analysis of (4% PFA) fixed human liver cancer tissue using FUCA1 antibody (67251-1-Ig, Clone: 1G5C5) at dilution of 1:400 and CoraLite®488-Conjugated AffiniPure Goat Anti-Mouse IgG(H+L).