

À des fins de recherche uniquement

Anticorps Monoclonal anti-BCR

Numéro de catalogue: 67260-1-Ig



Informations de base

Numéro de catalogue: 67260-1-Ig	Numéro d'acquisition GenBank: BC066122	Méthode de purification: Purification par protéine A
Taille: 150ul , Concentration: 1600 µg/ml by Nanodrop and 1000 µg/ml by Bradford method using BSA as the standard;	Identification du gène (NCBI): 613	CloneNo.: 2C2E3
Hôte: Mouse	Nom complet: breakpoint cluster region	Dilutions recommandées: WB 1:2000-1:10000
Isotype: IgG2b	MW calculé 143 kDa	
Immunogen Catalog Number: AG28953	MW observés: 150-160 kDa	

Applications

Applications testées: FC, WB, ELISA	Contrôles positifs: WB : cellules Jurkat, cellules HEK-293, cellules HeLa
Spécificité de l'espèce: Humain, rat	

Informations générales

The Bcr gene, mapping on chromosome22, was originally identified by its presence in the chimeric Bcr-Abl oncogene. The Bcr gene encodes for the break point cluster region protein(Bcr). Although the BCR-ABL fusion protein has been extensively studied, the function of the normal BCR gene product is not clear. The protein has serine/threonine kinase activity and is a GTPase-activating protein for RAC1 and CDC42. A chromosomal aberration involving BCR has been found in patients with chronic myeloid leukemia.

Stockage

Stockage:
Stocker à -20°C. Stable pendant un an après l'expédition.
Tampon de stockage:
PBS avec azoture de sodium à 0,02 % et glycérol à 50 % pH 7,3
L'aliquotage n'est pas nécessaire pour le stockage à -20C

*** Les 20ul contiennent 0,1% de BSA.

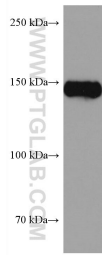
For technical support and original validation data for this product please contact:

T: 1 (888) 4PTGLAB (1-888-478-4522) (toll free
in USA), or 1(312) 455-8498 (outside USA)

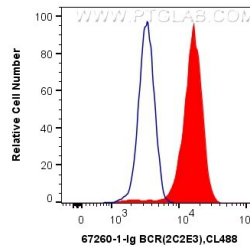
E: proteintech@ptglab.com
W: ptglab.com

This product is exclusively available under Proteintech Group brand and is not available to purchase from any other manufacturer.

Données de validation sélectionnées



Jurkat cells were subjected to SDS PAGE followed by western blot with 67260-1-Ig (BCR antibody) at dilution of 1:5000 incubated at room temperature for 1.5 hours.



1×10^6 K-562 cells were intracellularly stained with 0.4 μ g Anti-Human BCR (67260-1-Ig, Clone:2C2E3) and CoraLite[®]488-Conjugated AffiniPure Goat Anti-Mouse IgG(H+L) at dilution 1:1000 (red), or 0.4 μ g Mouse IgG2b Isotype Control (66360-3-Ig, Clone: K11B8C4B5) (blue). Cells were fixed with 4% PFA and permeabilized with Flow Cytometry Perm Buffer (PF00011-C).