

À des fins de recherche uniquement

# Anticorps Monoclonal anti-Glucagon



Numéro de catalogue: 67286-1-Ig **3 Publications**

## Informations de base

Numéro de catalogue: 67286-1-Ig	Numéro d'acquisition GenBank: BC005278	Méthode de purification: Purification par protéine G
Taille: 150ul , Concentration: 1800 µg/ml by Nanodrop and 1000 µg/ml by Bradford method using BSA as the standard;	Identification du gène (NCBI): 2641	CloneNo.: 2A8G1
Hôte: Mouse	Nom complet: glucagon	Dilutions recommandées: IHC 1:2000-1:15000 IF 1:50-1:500
Isotype: IgG1	MW calculé 180 aa, 21 kDa	
Immunogen Catalog Number: AG10629		

## Applications

### Applications testées:

IF, IHC, ELISA

### Demandes citées:

IF

### Spécificité de l'espèce:

Humain, souris

### Espèces citées:

souris

**Remarque-IHC: il est suggéré de démasquer l'antigène avec un tampon de TE buffer pH 9,0; (\*) A défaut, 'le démasquage de l'antigène peut être 'effectué avec un tampon citrate pH 6,0.**

### Contrôles positifs:

IHC : tissu pancréatique humain, tissu pancréatique de souris

IF : tissu pancréatique humain, tissu pancréatique de souris

## Informations générales

Glucagon is a 29-amino acid peptide hormone secreted from the pancreatic alpha cells with a powerful stimulatory effect on hepatic glucose production acting to increase plasma glucose levels. Glucagon is best known as the counter-regulatory hormone to INS, and normal glucose homeostasis depends largely on the balanced secretion of INS and glucagon from the pancreatic beta and alpha cells, respectively. The regulation of glucose metabolism by glucagon is mediated by its direct action on the peripheral tissues such as the liver and also by the brain. Glucagon is also released postprandially in a transient manner, which was shown to be involved in inhibition of food intake via reduction of meal size.

## Publications notables

Autrice	Pubmed ID	Journal	Application
Jingyu Fang	35498995	Food Chem X	IF
Xinghong Guo	34391847	Mol Cell Endocrinol	IF
Manyun Chen	37488134	NPJ Biofilms Microbiomes	IF

## Stockage

### Stockage:

Stocker à -20°C. Stable pendant un an après l'expédition.

### Tampon de stockage:

PBS avec azoture de sodium à 0,02 % et glycérol à 50 % pH 7,3

L'aliquotage n'est pas nécessaire pour le stockage à -20C

\*\*\* Les 20ul contiennent 0,1% de BSA.

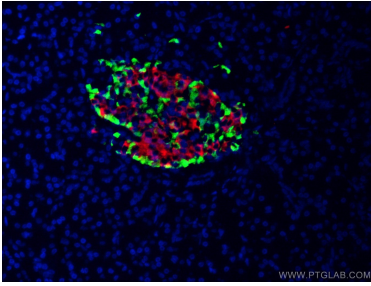
For technical support and original validation data for this product please contact:

T: 1 (888) 4PTGLAB (1-888-478-4522) (toll free in USA), or 1(312) 455-8498 (outside USA)

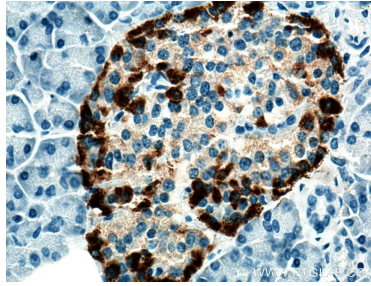
E: proteintech@ptglab.com  
W: ptglab.com

**This product is exclusively available under Proteintech Group brand and is not available to purchase from any other manufacturer.**

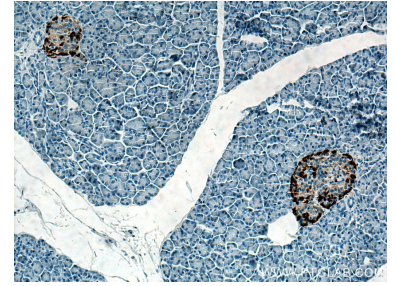
## Données de validation sélectionnées



Immunofluorescent analysis of (4% PFA) fixed human pancreas tissue using 67286-1-Ig (Glucagon antibody) at dilution of 1:50 and CoraLite488-Conjugated AffiniPure Goat Anti-Mouse IgG(H+L). The B cells of the islets of Langerhans was labelled in red with 15848-1-AP (Insulin antibody).



Immunohistochemical analysis of paraffin-embedded human pancreas tissue slide using 67286-1-Ig (Glucagon antibody) at dilution of 1:10000 (under 40x lens). Heat mediated antigen retrieval with Tris-EDTA buffer (pH 9.0).



Immunohistochemical analysis of paraffin-embedded human pancreas tissue slide using 67286-1-Ig (Glucagon antibody) at dilution of 1:10000 (under 10x lens). Heat mediated antigen retrieval with Tris-EDTA buffer (pH 9.0).