

À des fins de recherche uniquement

Anticorps Monoclonal anti-Collagen Type I



Numéro de catalogue: 67288-1-Ig

111 Publications

Informations de base

Numéro de catalogue: 67288-1-Ig	Numéro d'acquisition GenBank: NM_000088	Méthode de purification: Purification par protéine A
Taille: 150ul, Concentration: 1000 µg/ml by Nanodrop;	Identification du gène (NCBI): 1277	CloneNo.: 1E9A7
Hôte: Mouse	Nom complet: collagen, type I, alpha 1	Dilutions recommandées: WB 1:5000-1:50000 IHC 1:2500-1:10000 IF 1:200-1:800
Isotype: IgG1	MW calculé: 139 kDa MW observés: 120-130 kDa	

Applications

Applications testées:
IF, IHC, WB, ELISA

Demandes citées:
IF, IHC, WB

Spécificité de l'espèce:
Humain, porc

Espèces citées:
Humain, Lapin

Remarque-IHC: il est suggéré de démasquer l'antigène avec un tampon de TE buffer pH 9,0; (*) À défaut, le démasquage de l'antigène peut être effectué avec un tampon citrate pH 6,0.

Contrôles positifs:

WB : tissu de côlon de porc, tissu cutané de porc, tissu de cancer du col de l'utérus humain, tissu placentaire humain, tissu pulmonaire de porc

IHC : tissu de cancer du sein humain, tissu de cancer du côlon humain, tissu de côlon humain

IF : tissu de cancer du côlon humain,

Informations générales

Type I collagen, the major structural component of connective tissues such as skin, tendon and bone, is the most abundant and widely expressed collagen in humans (PMID: 7620364; 8645190; 9016532). Type I collagen is a heterotrimer comprising one alpha 2(I) and two alpha 1(I) chains which are encoded by the unlinked loci COL1A2 and COL1A1 respectively. Mutations in COL1A1 are associated with osteogenesis imperfecta types I-IV, Ehlers-Danlos syndrome type VIIA, Ehlers-Danlos syndrome Classical type, Caffey Disease and idiopathic osteoporosis. This antibody raised against a synthesized peptide corresponding to 1206-1218 aa of human pro-alpha 1 chain of type I collagen recognize collagen alpha-1(I) chain.

Publications notables

Autrice	Pubmed ID	Journal	Application
Siyuan Dong	33062455	PeerJ	IHC
Fei Yao	36163271	Inflamm Regen	WB
Xia Niu	34681175	Pharmaceuticals (Basel)	WB

Stockage

Stockage:

Stocker à -20 °C

Tampon de stockage:

PBS avec azoture de sodium à 0,02 % et glycérol à 50 % pH 7,3

L'aliquotage n'est pas nécessaire pour le stockage à -20C

*** Les 20ul contiennent 0,1% de BSA.

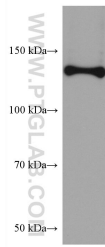
For technical support and original validation data for this product please contact:

T: 1 (888) 4PTGLAB (1-888-478-4522) (toll free in USA), or 1(312) 455-8498 (outside USA)

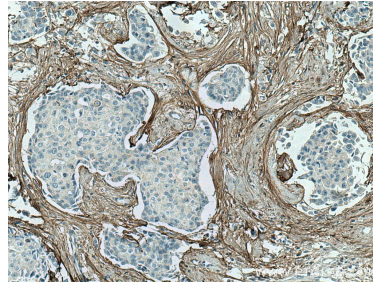
E: proteintech@ptglab.com
W: ptglab.com

This product is exclusively available under Proteintech Group brand and is not available to purchase from any other manufacturer.

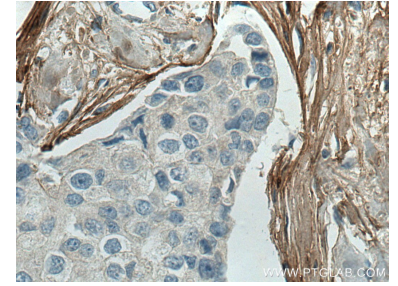
Données de validation sélectionnées



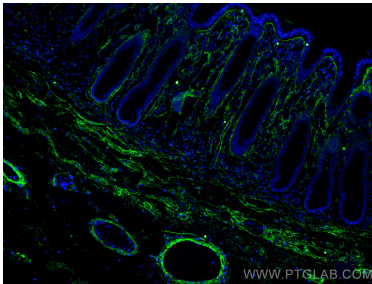
pig colon tissue were subjected to SDS PAGE followed by western blot with 67288-1-Ig (Collagen Type I antibody) at dilution of 1:10000 incubated at room temperature for 1.5 hours.



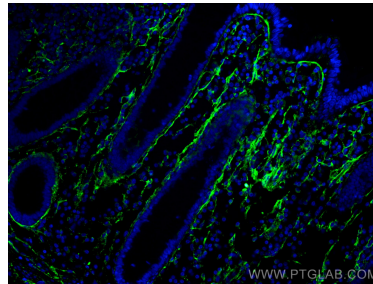
Immunohistochemical analysis of paraffin-embedded human breast cancer tissue slide using 67288-1-Ig (Collagen Type I antibody) at dilution of 1:5000 (under 10x lens). Heat mediated antigen retrieval with Tris-EDTA buffer (pH 9.0).



Immunohistochemical analysis of paraffin-embedded human breast cancer tissue slide using 67288-1-Ig (Collagen Type I antibody) at dilution of 1:5000 (under 40x lens). Heat mediated antigen retrieval with Tris-EDTA buffer (pH 9.0).



Immunofluorescent analysis of (4% PFA) fixed human colon cancer tissue using Collagen Type I antibody (67288-1-Ig, Clone: 1E9A7) at dilution of 1:400 and CoraLite®488-Conjugated AffiniPure Goat Anti-Mouse IgG(H+L).



Immunofluorescent analysis of (4% PFA) fixed human colon cancer tissue using Collagen Type I antibody (67288-1-Ig, Clone: 1E9A7) at dilution of 1:400 and CoraLite®488-Conjugated AffiniPure Goat Anti-Mouse IgG(H+L).