

À des fins de recherche uniquement

# Anticorps Monoclonal anti-WFS1

Numéro de catalogue: 67291-1-Ig



## Informations de base

<b>Numéro de catalogue:</b> 67291-1-Ig	<b>Numéro d'acquisition GenBank:</b> BC030130	<b>Méthode de purification:</b> Purification par protéine G
<b>Taille:</b> 150ul, Concentration: 2735 µg/ml by Nanodrop and 1000 µg/ml by Bradford method using BSA as the standard;	<b>Identification du gène (NCBI):</b> 7466	<b>CloneNo.:</b> 4C2B5
<b>Hôte:</b> Mouse	<b>Nom complet:</b> Wolfram syndrome 1 (wolframin)	<b>Dilutions recommandées:</b> WB 1:1000-1:5000
<b>Isotype:</b> IgG1	<b>MW calculé</b> 890 aa, 100 kDa	
<b>Immunogen Catalog Number:</b> AG25735	<b>MW observés:</b> 100 kDa	

## Applications

**Applications testées:**  
WB, ELISA

**Spécificité de l'espèce:**  
Humain, porc, rat, souris

### Contrôles positifs:

WB : cellules HeLa, cellules C6, cellules HEK-293,  
cellules Neuro-2a, cellules PC-12, cellules SH-SY5Y,  
cellules U-251

## Informations générales

Wolfram syndrome protein (WFS1), also called wolframin, is a transmembrane protein, which is located primarily in the endoplasmic reticulum and its expression is induced in response to ER stress, partially through transcriptional activation. ER localization suggests that WFS1 protein has physiological functions in membrane trafficking, secretion, processing and/or regulation of ER calcium homeostasis. It is ubiquitously expressed with highest levels in brain, pancreas, heart, and insulinoma beta-cell lines. Mutations of the WFS1 gene are responsible for two hereditary diseases, autosomal recessive Wolfram syndrome and autosomal dominant low frequency sensorineural hearing loss.

## Stockage

**Stockage:**  
Stocker à -20°C. Stable pendant un an après l'expédition.

**Tampon de stockage:**  
PBS avec azoture de sodium à 0,02 % et glycérol à 50 % pH 7,3

L'aliquotage n'est pas nécessaire pour le stockage à -20C

\*\*\* Les 20ul contiennent 0,1% de BSA.

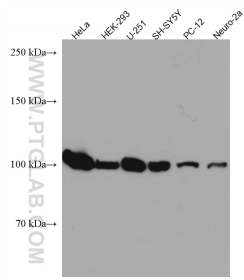
For technical support and original validation data for this product please contact:

T: 1 (888) 4PTGLAB (1-888-478-4522) (toll free  
in USA), or 1(312) 455-8498 (outside USA)

E: [proteintech@ptglab.com](mailto:proteintech@ptglab.com)  
W: [ptglab.com](http://ptglab.com)

This product is exclusively available under Proteintech Group brand and is not available to purchase from any other manufacturer.

## Données de validation sélectionnées



Various lysates were subjected to SDS PAGE followed by western blot with 67291-1-Ig (WFS1 antibody) at dilution of 1:3000 incubated at room temperature for 1.5 hours.