

À des fins de recherche uniquement

Anticorps Monoclonal anti-DOCK1

Numéro de catalogue: 67296-1-Ig



Informations de base

Numéro de catalogue: 67296-1-Ig	Numéro d'acquisition GenBank: BC146857	Méthode de purification: Purification par protéine A
Taille: 150ul, Concentration: 1700 µg/ml by Nanodrop and 1000 µg/ml by Bradford method using BSA as the standard;	Identification du gène (NCBI): 1793	CloneNo.: 1C3F12
Hôte: Mouse	Nom complet: dedicator of cytokinesis 1	Dilutions recommandées: WB 1:1000-1:6000
Isotype: IgG2a	MW calculé 1865 aa, 215 kDa	
Immunogen Catalog Number: AG18069	MW observés: 215 kDa	

Applications

Applications testées: WB, ELISA	Contrôles positifs: WB : cellules HeLa, cellules 4T1, cellules HEK-293, cellules HepG2, cellules HSC-T6, cellules NIH/3T3
Spécificité de l'espèce: Humain, rat, souris	

Informations générales

DOCK1, also named as DOCK180, belongs to the DOCK family. It is involved in cytoskeletal rearrangements required for phagocytosis of apoptotic cells and cell motility. DOCK1 functions as a guanine nucleotide exchange factor (GEF), which activates Rac Rho small GTPases by exchanging bound GDP for free GTP. Its GEF activity may be enhanced by ELMO1

Stockage

Stockage:
Stocker à -20°C. Stable pendant un an après l'expédition.
Tampon de stockage:
PBS avec azoture de sodium à 0,02 % et glycérol à 50 % pH 7,3
L'aliquotage n'est pas nécessaire pour le stockage à -20C

*** Les 20ul contiennent 0,1% de BSA.

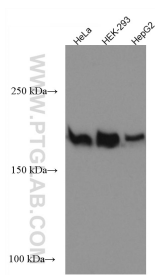
For technical support and original validation data for this product please contact:

T: 1 (888) 4PTGLAB (1-888-478-4522) (toll free
in USA), or 1(312) 455-8498 (outside USA)

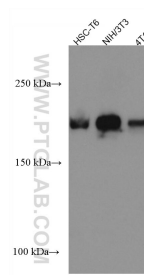
E: proteintech@ptglab.com
W: ptglab.com

This product is exclusively available under Proteintech Group brand and is not available to purchase from any other manufacturer.

Données de validation sélectionnées



Various lysates were subjected to SDS PAGE followed by western blot with 67296-1-Ig (DOCK1 antibody) at dilution of 1:3000 incubated at room temperature for 1.5 hours.



Various lysates were subjected to SDS PAGE followed by western blot with 67296-1-Ig (DOCK1 antibody) at dilution of 1:3000 incubated at room temperature for 1.5 hours.