

À des fins de recherche uniquement

Anticorps Monoclonal anti-KLF6

Numéro de catalogue: 67297-1-Ig **2 Publications**



Informations de base

Numéro de catalogue: 67297-1-Ig	Numéro d'acquisition GenBank: BC000311	Méthode de purification: Purification par protéine A
Taille: 150ul , Concentration: 1800 µg/ml by Nanodrop and 1000 µg/ml by Bradford method using BSA as the standard;	Identification du gène (NCBI): 1316	CloneNo.: 2F8B3
Hôte: Mouse	Nom complet: Kruppel-like factor 6	Dilutions recommandées: WB 1:1000-1:6000
Isotype: IgG1	MW calculé: 32 kDa	
Immunogen Catalog Number: AG6859	MW observés: 32-42 kDa	

Applications

Applications testées: WB, ELISA	Contrôles positifs: WB : cellules JAR, cellules Jurkat, cellules K-562, cellules LO2, cellules NCCIT
Demandes citées: WB	
Spécificité de l'espèce: Humain, souris	
Espèces citées: Humain, souris	

Informations générales

KLF6(krupple-like factor 6) is a zinc finger transcription factor and tumor suppressor with biological activities and transcriptional targets in growing range. It is highly expressed in placenta followed by spleen, thymus, prostate, testis, small intestine and colon. One key target gene of KLF6 in endoglin, which is a homodimeric cell membrane glycoprotein and TGF-β auxiliary receptor, owns a pro-angiogenic role in endothelial cells and is also involved in malignant progression. Also KLF6 induces apoptosis in prostate cancer cells through upregulation of ATF3. KLF6 was normal detected as a 46kDa protein, which is larger than translation product(32kDa), because of post-translational modification including both phosphorylation and glycosylation. This antibody raise against the full length of KLF6 gene of human origin, and can recognize both of KLF6, included KLF6(~32kDa), p-KLF6(~35-46kDa). Otherwise, there may be a non-specific band(50kDa) showed in detection

Publications notables

Autrice	Pubmed ID	Journal	Application
Yun Liu	32998707	BMC Mol Cell Biol	WB
Xiaoyan Chen	37295703	Cell Signal	WB

Stockage

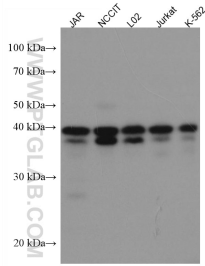
Stockage:
Stocker à -20°C. Stable pendant un an après l'expédition.
Tampon de stockage:
PBS avec azoture de sodium à 0,02 % et glycérol à 50 % pH 7,3
L'aliquotage n'est pas nécessaire pour le stockage à -20C

*** Les 20ul contiennent 0,1% de BSA.

For technical support and original validation data for this product please contact:
T: 1 (888) 4PTGLAB (1-888-478-4522) (toll free in USA), or 1(312) 455-8498 (outside USA)
E: proteintech@ptglab.com
W: ptglab.com

This product is exclusively available under Proteintech Group brand and is not available to purchase from any other manufacturer.

Données de validation sélectionnées



Various lysates were subjected to SDS PAGE followed by western blot with 67297-1-Ig (KLF6 antibody) at dilution of 1:3000 incubated at room temperature for 1.5 hours.