

À des fins de recherche uniquement

# Anticorps Monoclonal anti-MYH1

Numéro de catalogue: 67299-1-Ig **2 Publications**



## Informations de base

Numéro de catalogue: 67299-1-Ig	Numéro d'acquisition GenBank: BC114545	Méthode de purification: Purification par protéine A
Taille: 150ul, Concentration: 1500 µg/ml by Nanodrop and 1000 µg/ml by Bradford method using BSA as the standard;	Identification du gène (NCBI): 4619	CloneNo.: 1G10H9
Hôte: Mouse	Nom complet: myosin, heavy chain 1, skeletal muscle, adult	Dilutions recommandées: WB 1:20000-1:100000 IHC 1:2000-1:20000
Isotype: IgG2a	MW calculé: 1939 aa, 223 kDa	
Immunogen Catalog Number: AG17129	MW observés: 220 kDa	

## Applications

### Applications testées:

FC, IHC, WB, ELISA

### Demandes citées:

IF, WB

### Spécificité de l'espèce:

Humain, porc, souris

### Espèces citées:

porc, souris

**Remarque-IHC: il est suggéré de démasquer l'antigène avec un tampon de TE buffer pH 9,0; (\*) A défaut, 'le démasquage de l'antigène peut être effectué avec un tampon citrate pH 6,0.**

### Contrôles positifs:

WB : tissu de muscle squelettique humain, tissu de muscle squelettique de porc, tissu de muscle squelettique de souris

IHC : tissu de muscle squelettique de souris,

## Informations générales

MYH1 (MyHC-2x) encodes the IIX isoform of myosin heavy chain (MyHC). Myosin is a large, ubiquitous, motor protein that generates force through its interaction with actin, thus involving it in a number of cellular processes including cytokinesis, karyokinesis, cell migration, and muscle contraction. Muscle fibers can be divided as type 1 (slow) and type 2 (fast). MYH1 belongs to type 2.

## Publications notables

Autrice	Pubmed ID	Journal	Application
Lingyu Zhang	35583212	Food Funct	WB
Xiaomao Luo	37511159	Int J Mol Sci	IF, WB

## Stockage

### Stockage:

Stocker à -20°C. Stable pendant un an après l'expédition.

### Tampon de stockage:

PBS avec azoture de sodium à 0,02 % et glycérol à 50 % pH 7,3

L'aliquotage n'est pas nécessaire pour le stockage à -20C

\*\*\* Les 20ul contiennent 0,1% de BSA.

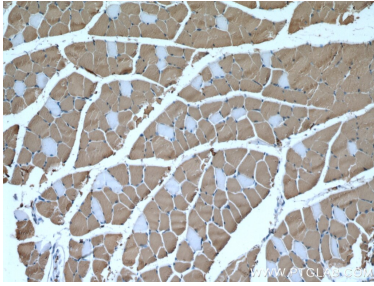
For technical support and original validation data for this product please contact:

T: 1 (888) 4PTGLAB (1-888-478-4522) (toll free in USA), or 1(312) 455-8498 (outside USA)

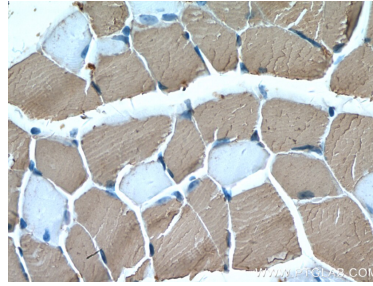
E: proteintech@ptglab.com  
W: ptglab.com

This product is exclusively available under Proteintech Group brand and is not available to purchase from any other manufacturer.

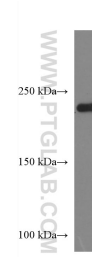
## Données de validation sélectionnées



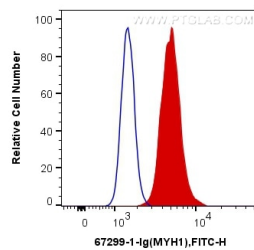
Immunohistochemical analysis of paraffin-embedded mouse skeletal muscle tissue slide using 67299-1-Ig (MYH1 antibody) at dilution of 1:10000 (under 10x lens). Heat mediated antigen retrieval with Tris-EDTA buffer (pH 9.0).



Immunohistochemical analysis of paraffin-embedded mouse skeletal muscle tissue slide using 67299-1-Ig (MYH1 antibody) at dilution of 1:10000 (under 40x lens). Heat mediated antigen retrieval with Tris-EDTA buffer (pH 9.0).



1 µg human skeletal muscle lysates were subjected to SDS PAGE followed by western blot with 67299-1-Ig (MYH1 antibody) at dilution of 1:100000 incubated at room temperature for 1.5 hours.



1X10<sup>6</sup> C2C12 cells were intracellularly stained with 0.4 µg Anti-Human MYH1 (67299-1-Ig, Clone:1G10H9) and CoraLite®488-Conjugated AffiniPure Goat Anti-Mouse IgG(H+L) at dilution 1:1000 (red), or 0.4 µg Control Antibody. Cells were fixed with 4% PFA and permeabilized with Flow Cytometry Perm Buffer (PF00011-C).