

À des fins de recherche uniquement

# Anticorps Monoclonal anti-CD107a / LAMP1



Numéro de catalogue: 67300-1-Ig **3 Publications**

## Informations de base

Numéro de catalogue: 67300-1-Ig	Numéro d'acquisition GenBank: BC021288	Méthode de purification: Purification par protéine A
Taille: 150ul, Concentration: 900 µg/ml by Nanodrop and 500 µg/ml by Bradford method using BSA as the standard;	Identification du gène (NCBI): 3916	CloneNo.: 3B2E9
Hôte: Mouse	Nom complet: lysosomal-associated membrane protein 1	Dilutions recommandées: WB 1:5000-1:50000 IHC 1:50-1:500 IF 1:200-1:800
Isotype: IgG2b	MW calculé 417 aa, 45 kDa	
Immunogen Catalog Number: AG28869	MW observés: 90-120 kDa	

## Applications

### Applications testées:

IF, IHC, WB, ELISA

### Demandes citées:

IF, WB

### Spécificité de l'espèce:

Humain

### Espèces citées:

Humain, souris

**Remarque-IHC: il est suggéré de démasquer l'antigène avec un tampon de TE buffer pH 9,0; (\*) A défaut, 'le démasquage de l'antigène peut être 'effectué avec un tampon citrate pH 6,0.**

### Contrôles positifs:

WB : cellules HT-1080, cellules HeLa, cellules HepG2, cellules JAR, cellules Jurkat, cellules K-562, cellules MDA-MB-231, cellules THP-1, cellules U-937

IHC : tissu de cancer du foie humain, tissu de cancer du poumon humain

IF : tissu de cancer du foie humain,

## Informations générales

LAMP1 (also known as CD107a) is a 90-120 kDa heavily glycosylated membrane protein enriched in the lysosomal membrane. LAMP1 functions to provide selectins with carbohydrate ligands. This protein has also been shown to be a marker of degranulation on lymphocytes such as CD8+ and NK cells and may also play a role in tumor cell differentiation and metastasis.

## Publications notables

Autrice	Pubmed ID	Journal	Application
Zhouyangfan Peng	36131930	Front Immunol	WB
Jiaqin Chen	36900398	Cancers (Basel)	WB,IF
Yutong Liu	36978814	Antioxidants (Basel)	WB

## Stockage

### Stockage:

Stocker à -20°C. Stable pendant un an après l'expédition.

### Tampon de stockage:

PBS avec azoture de sodium à 0,02 % et glycérol à 50 % pH 7,3

L'aliquotage n'est pas nécessaire pour le stockage à -20C

**\*\*\* Les 20ul contiennent 0,1% de BSA.**

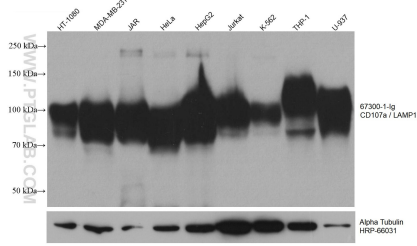
For technical support and original validation data for this product please contact:

T: 1 (888) 4PTGLAB (1-888-478-4522) (toll free in USA), or 1(312) 455-8498 (outside USA)

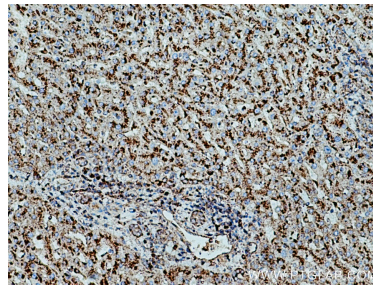
E: proteintech@ptglab.com  
W: ptglab.com

**This product is exclusively available under Proteintech Group brand and is not available to purchase from any other manufacturer.**

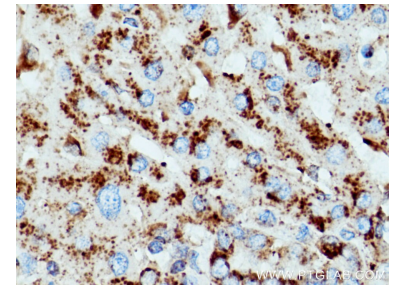
## Données de validation sélectionnées



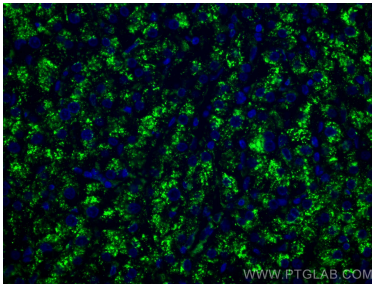
Various lysates were subjected to SDS PAGE followed by western blot with 67300-1-Ig (CD107a antibody) at dilution of 1:10000 incubated at room temperature for 1.5 hours. The membrane was stripped and reblotted with HRP-conjugated Alpha Tubulin Monoclonal antibody (HRP-66031) as loading control.



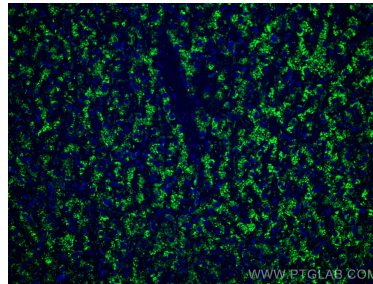
Immunohistochemical analysis of paraffin-embedded human liver cancer tissue slide using 67300-1-Ig (CD107a antibody) at dilution of 1:200 (under 10x lens). Heat mediated antigen retrieval with Tris-EDTA buffer (pH 9.0).



Immunohistochemical analysis of paraffin-embedded human liver cancer tissue slide using 67300-1-Ig (CD107a antibody) at dilution of 1:200 (under 40x lens). Heat mediated antigen retrieval with Tris-EDTA buffer (pH 9.0).



Immunofluorescent analysis of (4% PFA) fixed human liver cancer tissue using CD107a antibody (67300-1-Ig, Clone: 3B2E9) at dilution of 1:400 and CoraLite@488-Conjugated AffiniPure Goat Anti-Mouse IgG(H+L).



Immunofluorescent analysis of (4% PFA) fixed human liver cancer tissue using CD107a antibody (67300-1-Ig, Clone: 3B2E9) at dilution of 1:400 and CoraLite@488-Conjugated AffiniPure Goat Anti-Mouse IgG(H+L).