

À des fins de recherche uniquement

Anticorps Monoclonal anti-MTMR2

Numéro de catalogue: 67312-1-Ig **Phare**



Informations de base

Numéro de catalogue: 67312-1-Ig	Numéro d'acquisition GenBank: BC052990	Méthode de purification: Purification par protéine A
Taille: 150ul , Concentration: 1700 µg/ml by Nanodrop and 1000 µg/ml by Bradford method using BSA as the standard;	Identification du gène (NCBI): 8898	CloneNo.: 1B11B7
Hôte: Mouse	Nom complet: myotubularin related protein 2	Dilutions recommandées: WB 1:1000-1:6000
Isotype: IgG2b	MW calculé 73 kDa	
Immunogen Catalog Number: AG28413	MW observés: 66-73 kDa	

Applications

Applications testées: WB,ELISA	Contrôles positifs: WB : cellules HeLa, cellules HEK-293, cellules Jurkat, tissu cérébral de porc
Spécificité de l'espèce: Humain	

Informations générales

MTMR2(myotubularin-related protein 2) is also named as KIAA1073 and belongs to the non-receptor class myotubularin subfamily, which is characterized by the presence of a phosphatase domain. It may regulate vesicular trafficking in Schwann cells (PMID:17880751) and its reversible phosphorylation represents a critical mechanism for regulating the subcellular localization of MTMR2(PMID:21372139). MTMR2 is a 73 kDa protein in its monomeric form and exist as a dimer within cells and the protein re-localizes to membranes in hypo-osmotic settings(PMID:16399794). Defects in MTMR2 are the cause of Charcot-Marie-Tooth disease type 4B1 (CMT4B1). MTMR2 has two isoforms with the molecular mass of 73 and 66 kDa.

Stockage

Stockage:
Stocker à -20 °C
Tampon de stockage:
PBS avec azoture de sodium à 0,02 % et glycérol à 50 % pH 7,3
L'aliqotage n'est pas nécessaire pour le stockage à -20C

***** Les 20ul contiennent 0,1% de BSA.**

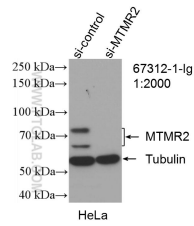
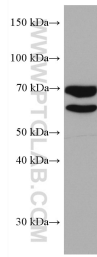
For technical support and original validation data for this product please contact:

T: 1 (888) 4PTGLAB (1-888-478-4522) (toll free
in USA), or 1(312) 455-8498 (outside USA)

E: proteintech@ptglab.com
W: ptglab.com

This product is exclusively available under Proteintech Group brand and is not available to purchase from any other manufacturer.

Données de validation sélectionnées



HeLa cells were subjected to SDS PAGE followed by western blot with 67312-1-Ig (MTMR2 antibody) at dilution of 1:3000 incubated at room temperature for 1.5 hours.

WB result of MTMR2 antibody (67312-1-Ig; 1:2000; incubated at room temperature for 1.5 hours) with sh-Control and sh-MTMR2 transfected HeLa cells.