

À des fins de recherche uniquement

# Anticorps Monoclonal anti-TLR8

Numéro de catalogue: 67317-1-Ig



## Informations de base

<b>Numéro de catalogue:</b> 67317-1-Ig	<b>Numéro d'acquisition GenBank:</b> BC101075	<b>Méthode de purification:</b> Purification par protéine G
<b>Taille:</b> 150ul, Concentration: 700 µg/ml by Nanodrop and 500 µg/ml by Bradford method using BSA as the standard;	<b>Identification du gène (NCBI):</b> 51311	<b>CloneNo.:</b> 3B6A4
<b>Hôte:</b> Mouse	<b>Nom complet:</b> toll-like receptor 8	<b>Dilutions recommandées:</b> WB 1:5000-1:50000 IHC 1:50-1:500 IF 1:200-1:800
<b>Isotype:</b> IgG1	<b>MW calculé:</b> 1041 aa, 120 kDa	
<b>Immunogen Catalog Number:</b> AG16566	<b>MW observés:</b> 120 kDa	

## Applications

### Applications testées:

IF, IHC, WB, ELISA

### Spécificité de l'espèce:

Humain

**Remarque-IHC: il est suggéré de démasquer l'antigène avec un tampon de TE buffer pH 9.0; (\*) À défaut, le démasquage de l'antigène peut être effectué avec un tampon citrate pH 6.0.**

### Contrôles positifs:

WB : cellules Daudi, cellules HL-60, cellules K-562, cellules U-937

IHC : tissu d'amygdalite humain,

IF : tissu d'amygdalite humain,

## Informations générales

Toll-like receptors (TLRs) are a group of pathogen recognition receptors (PRRs) that can be divided into two subfamilies depending on their subcellular localization (PMID: 32268138). Toll-like receptor 8 (TLR8), a sensor for pathogen-derived single-stranded RNA (ssRNA), binds to uridine (Uri) and ssRNA to induce defense responses (PMID: 30535046). TLR8 proteins were expressed in spleen, epididymal sperm, testicular sperm cells, and Leydig cells but were weak in Sertoli cells. It can identify two isoforms, 120 and 122 kDa.

## Stockage

### Stockage:

Stocker à -20 °C.

### Tampon de stockage:

PBS avec azoture de sodium à 0,02 % et glycérol à 50 % pH 7,3

L'aliquotage n'est pas nécessaire pour le stockage à -20C

\*\*\* Les 20ul contiennent 0,1% de BSA.

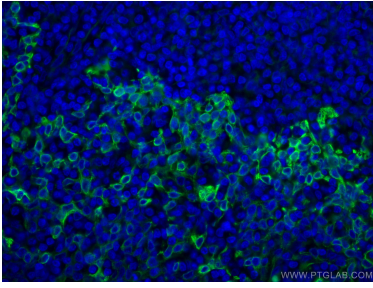
For technical support and original validation data for this product please contact:

T: 1 (888) 4PTGLAB (1-888-478-4522) (toll free in USA), or 1(312) 455-8498 (outside USA)

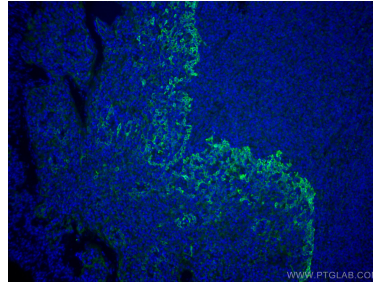
E: proteintech@ptglab.com  
W: ptglab.com

This product is exclusively available under Proteintech Group brand and is not available to purchase from any other manufacturer.

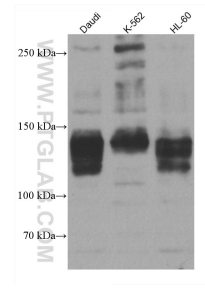
## Données de validation sélectionnées



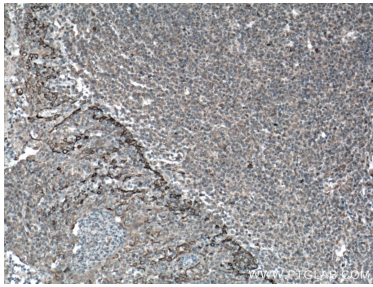
Immunofluorescent analysis of (4% PFA) fixed human tonsillitis tissue using TLR8 antibody (67317-1-Ig, Clone: 3B6A4) at dilution of 1:400 and CoraLite®488-Conjugated AffiniPure Goat Anti-Mouse IgG(H+L).



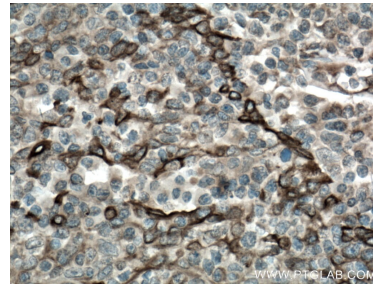
Immunofluorescent analysis of (4% PFA) fixed human tonsillitis tissue using TLR8 antibody (67317-1-Ig, Clone: 3B6A4) at dilution of 1:400 and CoraLite®488-Conjugated AffiniPure Goat Anti-Mouse IgG(H+L).



Various lysates were subjected to SDS PAGE followed by western blot with 67317-1-Ig (TLR8 antibody) at dilution of 1:10000 incubated at room temperature for 1.5 hours.



Immunohistochemical analysis of paraffin-embedded human tonsillitis tissue slide using 67317-1-Ig (TLR8 antibody) at dilution of 1:200 (under 10x lens). Heat mediated antigen retrieval with Tris-EDTA buffer (pH 9.0).



Immunohistochemical analysis of paraffin-embedded human tonsillitis tissue slide using 67317-1-Ig (TLR8 antibody) at dilution of 1:200 (under 40x lens). Heat mediated antigen retrieval with Tris-EDTA buffer (pH 9.0).