

À des fins de recherche uniquement

Anticorps Monoclonal anti-EPHX2

Numéro de catalogue: 67322-1-Ig **Phare**



Informations de base

Numéro de catalogue: 67322-1-Ig	Numéro d'acquisition GenBank: BC013874	Méthode de purification: Purification par protéine A
Taille: 150ul , Concentration: 2100 µg/ml by Nanodrop and 1000 µg/ml by Bradford method using BSA as the standard;	Identification du gène (NCBI): 2053	CloneNo.: 4H6C8
Hôte: Mouse	Nom complet: epoxide hydrolase 2, cytoplasmic	Dilutions recommandées: WB 1:2000-1:10000
Isotype: IgG2b	MW calculé 63 kDa	
Immunogen Catalog Number: AG4870	MW observés: 56-63 kDa	

Applications

Applications testées: WB, ELISA	Contrôles positifs: WB : cellules LNCaP, cellules A549, cellules Jurkat, tissu hépatique de porc
Spécificité de l'espèce: Humain, porc	

Informations générales

EPHX2(Epoxide hydrolase 2) acts on epoxides (alkene oxides, oxiranes) and arene oxides and plays a role in xenobiotic metabolism by degrading potentially toxic epoxides. A number of single nucleotide polymorphisms (SNPs) in human EPHX2 have been linked to cardiovascular disease risk, including increased risk of coronary heart disease, hyperlipoproteinemia, and type-2 diabetes (PMID: 14732757, 16595607, 14673705, 15845398, 17460077). It was observed in many tissues with the band of 63 kDa in the western blot. It has also been reported that the N-terminal domain might promote dimerization of EPHX2 (PMID:21553642).

Stockage

Stockage:
Stocker à -20 °C.
Tampon de stockage:
PBS avec azoture de sodium à 0,02 % et glycérol à 50 % pH 7,3
L'aliquotage n'est pas nécessaire pour le stockage à -20C

*** Les 20ul contiennent 0,1% de BSA.

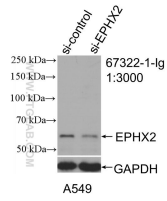
For technical support and original validation data for this product please contact:

T: 1 (888) 4PTGLAB (1-888-478-4522) (toll free
in USA), or 1(312) 455-8498 (outside USA)

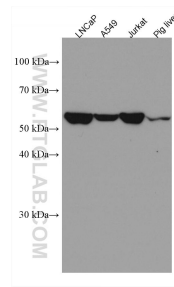
E: proteintech@ptglab.com
W: ptglab.com

This product is exclusively available under Proteintech Group brand and is not available to purchase from any other manufacturer.

Données de validation sélectionnées



WB result of EPHX2 antibody (67322-1-Ig; 1:3000; incubated at room temperature for 1.5 hours) with sh-Control and sh-EPHX2 transfected A549 cells.



Various lysates were subjected to SDS PAGE followed by western blot with 67322-1-Ig (EPHX2 antibody) at dilution of 1:5000 incubated at room temperature for 1.5 hours.