

À des fins de recherche uniquement

Anticorps Monoclonal anti-MAP2K4

Numéro de catalogue: 67333-1-Ig **2 Publications**



Informations de base

Numéro de catalogue: 67333-1-Ig	Numéro d'acquisition GenBank: BC036032	Méthode de purification: Purification par protéine A
Taille: 150ul, Concentration: 1700 µg/ml by Nanodrop and 1000 µg/ml by Bradford method using BSA as the standard;	Identification du gène (NCBI): 6416	CloneNo.: 2E4C1
Hôte: Mouse	Nom complet: mitogen-activated protein kinase kinase 4	Dilutions recommandées: WB 1:5000-1:50000 IHC 1:250-1:1000
Isotype: IgG2b	MW calculé: 399 aa, 44 kDa	
Immunogen Catalog Number: AG11348	MW observés: 44-50 kDa	

Applications

Applications testées:

IHC, WB, ELISA

Demandes citées:

WB

Spécificité de l'espèce:

Humain

Espèces citées:

Humain, souris

Remarque-IHC: il est suggéré de démasquer l'antigène avec un tampon de TE buffer pH 9,0; (*) A défaut, 'le démasquage de l'antigène peut être effectué avec un tampon citrate pH 6,0.

Contrôles positifs:

WB : cellules HEK-293, cellules HepG2, cellules HSC-T6, cellules Jurkat, cellules K-562

IHC : tissu de cancer du sein humain,

Informations générales

MEK4 is also named as JNKK1, MAP2K4, MKK4, PRKMK4, SEK1, SERK1, SKK1 and belongs to the protein kinase superfamily. MEK4 is a member of the mitogen-activated protein kinase family, originally identified as a kinase involved in the stress-activated protein kinase pathway by directly phosphorylating c-Jun NH 2-terminal kinase. This protein has 2 isoforms produced by alternative splicing.

Publications notables

Autrice	Pubmed ID	Journal	Application
Zehua Zuo	35899070	PNAS Nexus	WB
Zhong Xian	37062136	Phytomedicine	WB

Stockage

Stockage:

Stocker à -20 °C.

Tampon de stockage:

PBS avec azoture de sodium à 0,02 % et glycérol à 50 % pH 7,3

L'aliquotage n'est pas nécessaire pour le stockage à -20C

*** Les 20ul contiennent 0,1% de BSA.

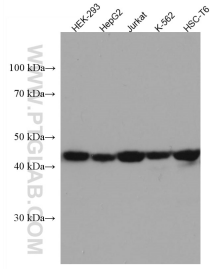
For technical support and original validation data for this product please contact:

T: 1 (888) 4PTGLAB (1-888-478-4522) (toll free in USA), or 1(312) 455-8498 (outside USA)

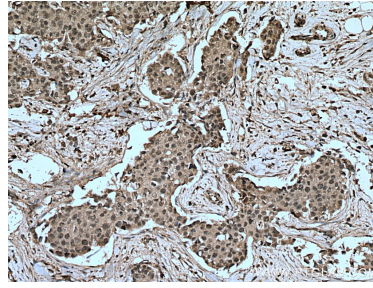
E: proteintech@ptglab.com
W: ptglab.com

This product is exclusively available under Proteintech Group brand and is not available to purchase from any other manufacturer.

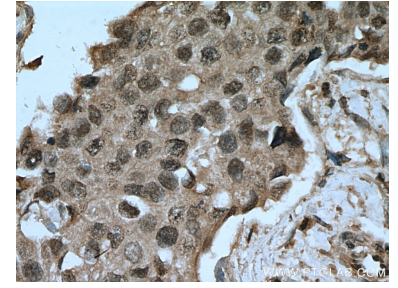
Données de validation sélectionnées



Various lysates were subjected to SDS PAGE followed by western blot with 67333-1-Ig (MAP2K4 antibody) at dilution of 1:20000 incubated at room temperature for 1.5 hours.



Immunohistochemical analysis of paraffin-embedded human breast cancer tissue slide using 67333-1-Ig (MAP2K4 antibody) at dilution of 1:500 (under 10x lens). Heat mediated antigen retrieval with Tris-EDTA buffer (pH 9.0).



Immunohistochemical analysis of paraffin-embedded human breast cancer tissue slide using 67333-1-Ig (MAP2K4 antibody) at dilution of 1:500 (under 40x lens). Heat mediated antigen retrieval with Tris-EDTA buffer (pH 9.0).