

À des fins de recherche uniquement

Anticorps Monoclonal anti-ODC1

Numéro de catalogue: 67336-1-Ig **Phare**



Informations de base

Numéro de catalogue: 67336-1-Ig	Numéro d'acquisition GenBank: BC025296	Méthode de purification: Purification par protéine G
Taille: 150ul , Concentration: 2000 µg/ml by Nanodrop and 940 µg/ml by Bradford method using BSA as the standard;	Identification du gène (NCBI): 4953	CloneNo.: 2A1E3
Hôte: Mouse	Nom complet: ornithine decarboxylase 1	Dilutions recommandées: WB 1:5000-1:50000
Isotype: IgG1	MW calculé 461 aa, 51 kDa	
Immunogen Catalog Number: AG10927	MW observés: 51 kDa	

Applications

Applications testées: WB,ELISA	Contrôles positifs: WB : cellules MCF-7, cellules HUVEC, tissu placentaire humain
Spécificité de l'espèce: Humain	

Informations générales

Ornithine decarboxylase (ODC) is also named as ODC1 and belongs to the Orn/Lys/Arg decarboxylase class-II family. It catalyzes the conversion of ornithine to putrescine, the first step and a major site of regulation of polyamine biosynthesis. The level of ODC is known to be controlled at several sites, namely transcription, translation, and enzyme degradation. Polyamines can stimulate the degradation of ODC as a type of negative feedback control (PMID:8486633). This protein can be phosphorylated in vivo (PMID:8798774). ODC1 can form a homodimer and only the dimer is catalytically active, as the active sites are constructed of residues from both monomers (PMID: 10623504). The molecular mass of ODC1 is 51 kDa, and the homodimer is 106 kDa.

Stockage

Stockage:
Stocker à -20 °C
Tampon de stockage:
PBS avec azoture de sodium à 0,02 % et glycérol à 50 % pH 7,3
L'aliquotage n'est pas nécessaire pour le stockage à -20C

***** Les 20ul contiennent 0,1% de BSA.**

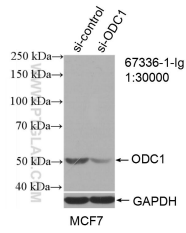
For technical support and original validation data for this product please contact:

T: 1 (888) 4PTGLAB (1-888-478-4522) (toll free in USA), or 1(312) 455-8498 (outside USA)

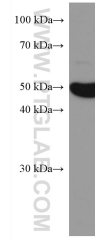
E: proteintech@ptglab.com
W: ptglab.com

This product is exclusively available under Proteintech Group brand and is not available to purchase from any other manufacturer.

Données de validation sélectionnées



WB result of ODC1 antibody (67336-1-Ig; 1:30000; incubated at room temperature for 1.5 hours) with sh-Control and sh-ODC1 transfected MCF-7 cells.



MCF-7 cells were subjected to SDS PAGE followed by western blot with 67336-1-Ig (ODC1 antibody) at dilution of 1:10000 incubated at room temperature for 1.5 hours.