

À des fins de recherche uniquement

# Anticorps Monoclonal anti-SYNPO

Numéro de catalogue: 67339-1-Ig **2 Publications**



## Informations de base

Numéro de catalogue: 67339-1-Ig	Numéro d'acquisition GenBank: BC146665	Méthode de purification: Purification par protéine G
Taille: 150ul, Concentration: 1800 µg/ml by Nanodrop and 1000 µg/ml by Bradford method using BSA as the standard;	Identification du gène (NCBI): 11346	CloneNo.: 1E1B1
Hôte: Mouse	Nom complet: synaptopodin	Dilutions recommandées: WB 1:2000-1:10000 IHC 1:750-1:3000 IF 1:200-1:800
Isotype: IgG1	MW calculé: 929 aa, 99 kDa	
Immunogen Catalog Number: AG15089	MW observés: 100-110 kDa	

## Applications

### Applications testées:

IF, IHC, WB, ELISA

### Demandes citées:

WB

### Spécificité de l'espèce:

Humain, porc, rat, souris

### Espèces citées:

souris

**Remarque-IHC: il est suggéré de démasquer l'antigène avec un tampon de TE buffer pH 9,0; (\*) A défaut, 'le démasquage de l'antigène peut être effectué avec un tampon citrate pH 6,0.**

### Contrôles positifs:

WB : tissu cérébral de rat, tissu cérébral de porc, tissu cérébral de souris

IHC : tissu cérébral de rat, tissu rénal de souris, tissu rénal humain

IF : tissu cérébral de souris,

## Informations générales

Synaptopodin is a actin-associated protein expressed in mature dendritic spines and renal podocytes. Several isoforms of synaptopodin have been reported: the 100 kDa neural form and 110 kDa renal form. 44-45 kDa may represent the degradation product of synaptopodin. As a podocyte specific protein, synaptopodin expression level was decreased in kidney but increased in the urinary podocytes from patients with preeclampsia, indicating that synaptopodin is a useful marker for preeclampsia. (15841212, 10555072)

## Publications notables

Autrice	Pubmed ID	Journal	Application
Shan Song	35908070	Cell Death Dis	WB
Chunkai Huang	35478960	Front Cell Dev Biol	WB

## Stockage

### Stockage:

Stocker à -20 °C

### Tampon de stockage:

PBS avec azoture de sodium à 0,02 % et glycérol à 50 % pH 7,3

L'aliquotage n'est pas nécessaire pour le stockage à -20C

\*\*\* Les 20ul contiennent 0,1% de BSA.

For technical support and original validation data for this product please contact:

T: 1 (888) 4PTGLAB (1-888-478-4522) (toll free in USA), or 1(312) 455-8498 (outside USA)

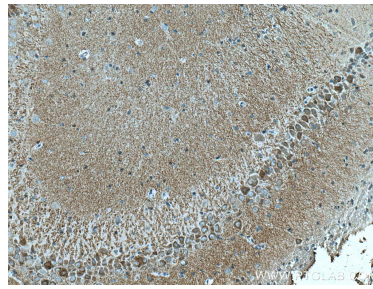
E: proteintech@ptglab.com  
W: ptglab.com

This product is exclusively available under Proteintech Group brand and is not available to purchase from any other manufacturer.

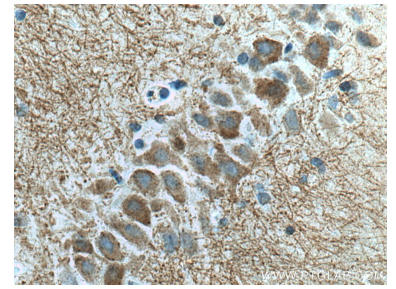
## Données de validation sélectionnées



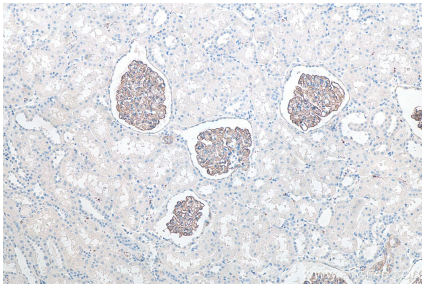
rat brain tissue were subjected to SDS PAGE followed by western blot with 67339-1-Ig (SYNPO antibody) at dilution of 1:5000 incubated at room temperature for 1.5 hours.



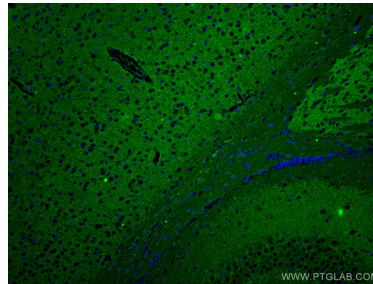
Immunohistochemical analysis of paraffin-embedded rat brain tissue slide using 67339-1-Ig (SYNPO antibody) at dilution of 1:1500 (under 10x lens). Heat mediated antigen retrieval with Tris-EDTA buffer (pH 9.0).



Immunohistochemical analysis of paraffin-embedded rat brain tissue slide using 67339-1-Ig (SYNPO antibody) at dilution of 1:1500 (under 40x lens). Heat mediated antigen retrieval with Tris-EDTA buffer (pH 9.0).



Immunohistochemical analysis of paraffin-embedded human kidney tissue slide using 67339-1-Ig (SYNPO antibody) at dilution of 1:8000 (under 10x lens). Heat mediated antigen retrieval with Tris-EDTA buffer (pH 9.0).



Immunofluorescent analysis of (4% PFA) fixed mouse brain tissue using SYNPO antibody (67339-1-Ig, Clone: 1E1B1) at dilution of 1:400 and Coralite®488-Conjugated AffiniPure Goat Anti-Mouse IgG(H+L).