

À des fins de recherche uniquement

Anticorps Monoclonal anti-PTGS1

Numéro de catalogue: 67346-1-Ig



Informations de base

Numéro de catalogue: 67346-1-Ig	Numéro d'acquisition GenBank: BC029840	Méthode de purification: Purification par protéine A
Taille: 150ul , Concentration: 1400 µg/ml by Nanodrop and 1000 µg/ml by Bradford method using BSA as the standard;	Identification du gène (NCBI): 5742	CloneNo.: 1F12G7
Hôte: Mouse	Nom complet: prostaglandin-endoperoxi de synthase 1 (prostaglandin G/H synthase and cyclooxygenase)	Dilutions recommandées: WB 1:1000-1:3000 IF 1:50-1:500
Isotype: IgG2b	MW calculé 599 aa, 69 kDa	
Immunogen Catalog Number: AG28280	MW observés: 60-72 kDa	

Applications

Applications testées: IF, WB, ELISA	Contrôles positifs:
Spécificité de l'espèce: Humain	WB : cellules L02, cellules A431, cellules K-562, leucocyte de sang périphérique humain IF : cellules HeLa,

Informations générales

PTGS1 (Prostaglandin G/H synthase 1) belongs to the prostaglandin G/H synthase family and catalyzes the conversion of arachidonic acid to prostaglandin H₂, which is subsequently metabolized to various biologically active prostaglandins. It is also named as COX1 (Cyclooxygenase-1). There is no PTGS1 expression in fetal samples (prostate, seminal vesicles, or ejaculatory ducts), and only minimal expression in adult tissues (PMID: 10999846). PTGS1 has some isoforms with MW of 56-72 kD and PTGS1 can form homodimer.

Stockage

Stockage:
Stocker à -20 °C.
Tampon de stockage:
PBS avec azote de sodium à 0,02 % et glycérol à 50 % pH 7,3
L'aliquotage n'est pas nécessaire pour le stockage à -20C

*** Les 20ul contiennent 0,1% de BSA.

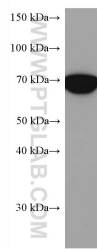
For technical support and original validation data for this product please contact:

T: 1 (888) 4PTGLAB (1-888-478-4522) (toll free in USA), or 1(312) 455-8498 (outside USA)

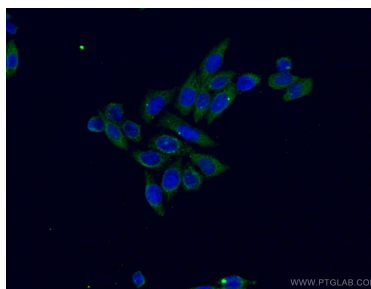
E: proteintech@ptglab.com
W: ptglab.com

This product is exclusively available under Proteintech Group brand and is not available to purchase from any other manufacturer.

Données de validation sélectionnées



L02 cells were subjected to SDS PAGE followed by western blot with 67346-1-Ig (PTGS1 antibody) at dilution of 1:3000 incubated at room temperature for 1.5 hours.



Immunofluorescent analysis of (-20°C Ethanol) fixed HeLa cells using 67346-1-Ig (PTGS1 antibody) at dilution of 1:100 and CoraLite488-Conjugated AffiniPure Goat Anti-Mouse IgG(H+L).