

À des fins de recherche uniquement

Anticorps Monoclonal anti-ALDH5A1



Numéro de catalogue: 67347-1-Ig Phare

Informations de base

Numéro de catalogue: 67347-1-Ig	Numéro d'acquisition GenBank: BC034321	Méthode de purification: Purification par protéine G
Taille: 150ul, Concentration: 1300 µg/ml by Nanodrop and 1000 µg/ml by Bradford method using BSA as the standard;	Identification du gène (NCBI): 7915	CloneNo.: 1B9H10
Hôte: Mouse	Nom complet: aldehyde dehydrogenase 5 family, member A1	Dilutions recommandées: WB 1:5000-1:50000 IHC 1:500-1:2000 IF 1:200-1:800
Isotype: IgG1	MW calculé 535 aa, 57 kDa	
Immunogen Catalog Number: AG11155	MW observés: 51 kDa	

Applications

Applications testées:
FC, IF, IHC, WB, ELISA

Spécificité de l'espèce:
Humain, porc, rat, souris

Remarque-IHC: il est suggéré de démasquer l'antigène avec un tampon de TE buffer pH 9.0; (*) À défaut, le démasquage de l'antigène peut être effectué avec un tampon citrate pH 6,0.

Contrôles positifs:

WB : cellules L02, cellules HepG2, tissu cérébral de porc

IHC : tissu de cancer du foie humain,

IF : tissu de cancer du foie humain,

Informations générales

Stockage

Stockage:
Stocker à -20°C. Stable pendant un an après l'expédition.
Tampon de stockage:
PBS avec azoture de sodium à 0,02 % et glycérol à 50 % pH 7,3
L'aliquotage n'est pas nécessaire pour le stockage à -20C

*** Les 20ul contiennent 0,1% de BSA.

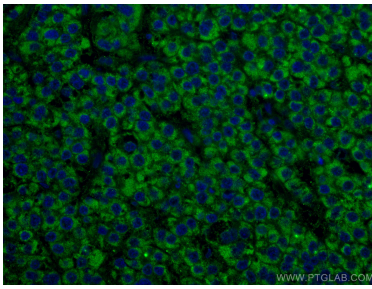
For technical support and original validation data for this product please contact:

T: 1 (888) 4PTGLAB (1-888-478-4522) (toll free in USA), or 1(312) 455-8498 (outside USA)

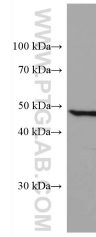
E: proteintech@ptglab.com
W: ptglab.com

This product is exclusively available under Proteintech Group brand and is not available to purchase from any other manufacturer.

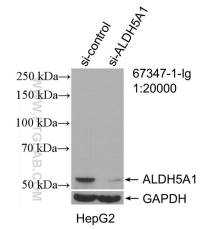
Données de validation sélectionnées



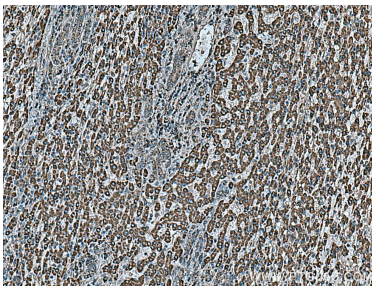
Immunofluorescent analysis of (4% PFA) fixed human liver cancer tissue using ALDH5A1 antibody (67347-1-Ig, Clone: 1B9H10) at dilution of 1:400 and CoraLite®488-Conjugated AffiniPure Goat Anti-Mouse IgG(H+L), DAPI (blue).



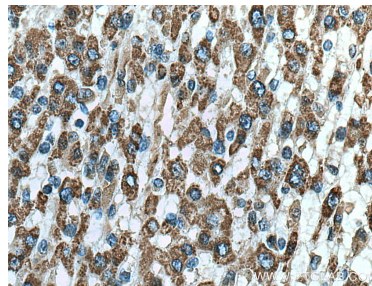
L02 cells were subjected to SDS PAGE followed by western blot with 67347-1-Ig (ALDH5A1 antibody) at dilution of 1:50000 incubated at room temperature for 1.5 hours.



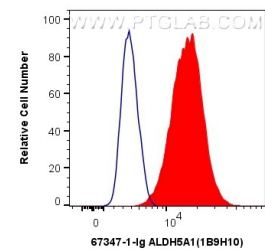
WB result of ALDH5A1 antibody (67347-1-Ig; 1:20000; incubated at room temperature for 1.5 hours) with sh-Control and sh-ALDH5A1 transfected HepG2 cells.



Immunohistochemical analysis of paraffin-embedded human liver cancer tissue slide using 67347-1-Ig (ALDH5A1 antibody) at dilution of 1:1000 (under 10x lens). Heat mediated antigen retrieval with Tris-EDTA buffer (pH 9.0).



Immunohistochemical analysis of paraffin-embedded human liver cancer tissue slide using 67347-1-Ig (ALDH5A1 antibody) at dilution of 1:1000 (under 40x lens). Heat mediated antigen retrieval with Tris-EDTA buffer (pH 9.0).



1×10^6 A431 cells were intracellularly stained with 0.4 ug Anti-Human ALDH5A1 (67347-1-Ig, Clone:1B9H10) and CoraLite®488-Conjugated AffiniPure Goat Anti-Mouse IgG(H+L) at dilution 1:1000 (red), or 0.4 ug Mouse IgG1 Isotype Control (MOPC-21) (65124-1-Ig, Clone: MOPC-21) (blue). Cells were fixed with 4% PFA and permeabilized with Flow Cytometry Perm Buffer (PF00011-C).