

À des fins de recherche uniquement

# Anticorps Monoclonal anti-SRY

Numéro de catalogue: 67349-1-Ig **1 Publications**



## Informations de base

<b>Numéro de catalogue:</b> 67349-1-Ig	<b>Numéro d'acquisition GenBank:</b> BC074924	<b>Méthode de purification:</b> Purification par protéine A
<b>Taille:</b> 150ul , Concentration: 1600 µg/ml by 6736 Nanodrop and 1000 µg/ml by Bradford method using BSA as the standard;	<b>Identification du gène (NCBI):</b> 6736	<b>CloneNo.:</b> 2E9A4
<b>Hôte:</b> Mouse	<b>Nom complet:</b> sex determining region Y	<b>Dilutions recommandées:</b> WB 1:1000-1:4000
<b>Isotype:</b> IgG1	<b>MW calculé</b> 204 aa, 24 kDa	
<b>Immunogen Catalog Number:</b> AG12610	<b>MW observés:</b> 25-30 kDa	

## Applications

<b>Applications testées:</b> WB, ELISA	<b>Contrôles positifs:</b> WB : cellules LNCaP, cellules DU 145, cellules HeLa
<b>Demandes citées:</b> WB	
<b>Spécificité de l'espèce:</b> Humain, rat	
<b>Espèces citées:</b> Humain	

## Informations générales

SRY (sex-determining region Y protein) is a tran-scriptional activator required for male sex determination in mammals. This protein, also referred to as testis-determining factor (TDF), is an HMG box protein that initiates the formation of testis from undifferentiated gonad. The DNA-binding activity of SRY is required for normal testis formation. This DNA-binding activity is thought to be regulated by PKA, which phosphorylates SRY in vivo. Mutations in SRY have been associated with 46,XY gonadal dysgenesis, in which the gonads fail to develop in XY phenotypic females.

## Publications notables

Autrice	Pubmed ID	Journal	Application
James W Clancy	35235806	Cell Rep	WB

## Stockage

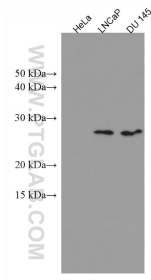
**Stockage:**  
Stocker à -20°C. Stable pendant un an après l'expédition.  
**Tampon de stockage:**  
PBS avec azoture de sodium à 0,02 % et glycérol à 50 % pH 7,3  
L'aliquotage n'est pas nécessaire pour le stockage à -20C

\*\*\* Les 20ul contiennent 0,1% de BSA.

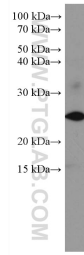
For technical support and original validation data for this product please contact:  
T: 1 (888) 4PTGLAB (1-888-478-4522) (toll free in USA), or 1(312) 455-8498 (outside USA)  
E: proteintech@ptglab.com  
W: ptglab.com

This product is exclusively available under Proteintech Group brand and is not available to purchase from any other manufacturer.

## Données de validation sélectionnées



Various lysates were subjected to SDS PAGE followed by western blot with 67349-1-Ig (SRY antibody) at dilution of 1:1000 incubated at room temperature for 1.5 hours. SRY negative cell line HeLa cell line was served as negative control.



LNCaP cells were subjected to SDS PAGE followed by western blot with 67349-1-Ig (SRY antibody) at dilution of 1:2000 incubated at room temperature for 1.5 hours.