

À des fins de recherche uniquement

Anticorps Monoclonal anti-MLH1

Numéro de catalogue: 67350-1-Ig **Phare**



Informations de base

Numéro de catalogue:	67350-1-Ig	Numéro d'acquisition GenBank:	BC006850	Méthode de purification:	Purification par protéine A
Taille:	150ul , Concentration: 2100 µg/ml by Nanodrop and 1000 µg/ml by Bradford method using BSA as the standard;	Identification du gène (NCBI):	4292	CloneNo.:	2F12C4
Hôte:	Mouse	Nom complet:	mutL homolog 1, colon cancer, nonpolyposis type 2 (E. coli)	Dilutions recommandées:	WB 1:5000-1:50000
Isotype:	IgG2a	MW calculé	756 aa, 85 kDa		
Immunogen Catalog Number:	AG27723	MW observés:	85-100 kDa, 40-45 kDa		

Applications

Applications testées:	WB, ELISA	Contrôles positifs:	WB : cellules A431, cellules Caco-2, cellules COLO 320, cellules HEK-293, cellules HeLa, cellules Jurkat
Spécificité de l'espèce:	Humain, rat		

Informations générales

MLH1, also named as COCA2, belongs to the DNA mismatch repair mutL/hexB family. It heterodimerizes with PMS2 to form MutL alpha which is a component of the post-replicative DNA mismatch repair system (MMR). MutL alpha (MLH1-PMS2) interacts physically with the clamp loader subunits of DNA polymerase III, suggesting that it may play a role to recruit the DNA polymerase III to the site of the MMR. MLH1 also implicated in DNA damage signaling, a process which induces cell cycle arrest and can lead to apoptosis in case of major DNA damages. MLH1 heterodimerizes with MLH3 to form MutL gamma which plays a role in meiosis. (PMID: 16873062, PMID: 18206974) Defects in MLH1 are the cause of hereditary non-polyposis colorectal cancer type 2 (HNPCC2). Defects in MLH1 are a cause of mismatch repair cancer syndrome (MMRCS). Defects in MLH1 are a cause of Muir-Torre syndrome (MTS). Defects in MLH1 are a cause of susceptibility to endometrial cancer. Western blot analysis with an MLH1 antibody detected a 85-100 kDa band. Full-length human MLH1 is specifically cleaved into degradation products of 40-45 kDa by caspase-3 (PMID: 15087450, PMID: 19603033). This antibody is specific to MLH1.

Stockage

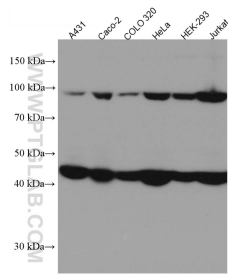
Stockage:
Stocker à -20 °C
Tampon de stockage:
PBS avec azoture de sodium à 0,1 % et glycérol à 50 % pH 7,3
L'aliquotage n'est pas nécessaire pour le stockage à -20C

*** Les 20ul contiennent 0,1% de BSA.

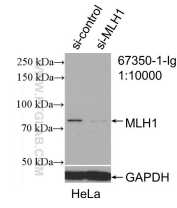
For technical support and original validation data for this product please contact:
T: 1 (888) 4PTGLAB (1-888-478-4522) (toll free in USA), or 1(312) 455-8498 (outside USA)
E: proteintech@ptglab.com
W: ptglab.com

This product is exclusively available under Proteintech Group brand and is not available to purchase from any other manufacturer.

Données de validation sélectionnées



Various lysates were subjected to SDS PAGE followed by western blot with 67350-1-Ig (MLH1 antibody) at dilution of 1:10000 incubated at room temperature for 1.5 hours.



WB result of MLH1 antibody (67350-1-Ig; 1:10000; incubated at room temperature for 1.5 hours) with sh-Control and sh-MLH1 transfected HeLa cells.