

À des fins de recherche uniquement

Anticorps Monoclonal anti-TUSC3

Numéro de catalogue: 67382-1-Ig **Phare**



Informations de base

Numéro de catalogue: 67382-1-Ig	Numéro d'acquisition GenBank: BC010370	Méthode de purification: Purification par protéine G
Taille: 150ul , Concentration: 2300 µg/ml by Nanodrop and 1000 µg/ml by Bradford method using BSA as the standard;	Identification du gène (NCBI): 7991	CloneNo.: 1D3G12
Hôte: Mouse	Nom complet: tumor suppressor candidate 3	Dilutions recommandées: WB 1:1000-1:6000
Isotype: IgG1	MW calculé 347 aa, 40 kDa	
Immunogen Catalog Number: AG9197	MW observés: 35 kDa	

Applications

Applications testées: WB,ELISA	Contrôles positifs: WB : cellules HeLa, tissu placentaire humain
Spécificité de l'espèce: Humain	

Informations générales

TUSC3 (tumor suppressor candidate 3), originally named N33, is a potential tumor suppressor gene. Decreased expression of TUSC3 has been found in various cancers, including prostate cancer, pancreas cancer and ovary cancer. TUSC3 also known as OST3A, is identified as a part of the oligosaccharyl-transferase (OST) complex and plays a crucial role in protein N-glycosylation. TUSC3 mutations have been found in families with non-syndromic autosomal recessive mental retardation.

Stockage

Stockage:
Stocker à -20 °C
Tampon de stockage:
PBS avec azoture de sodium à 0,02 % et glycérol à 50 % pH 7,3
L'aliquotage n'est pas nécessaire pour le stockage à -20C

***** Les 20ul contiennent 0,1% de BSA.**

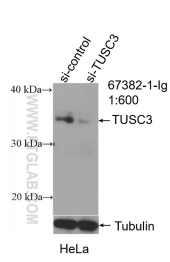
For technical support and original validation data for this product please contact:

T: 1 (888) 4PTGLAB (1-888-478-4522) (toll free
in USA), or 1(312) 455-8498 (outside USA)

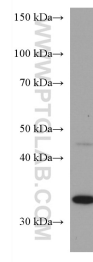
E: proteintech@ptglab.com
W: ptglab.com

This product is exclusively available under Proteintech Group brand and is not available to purchase from any other manufacturer.

Données de validation sélectionnées



WB result of TUSC3 antibody (67382-1-Ig; 1:600; incubated at room temperature for 1.5 hours) with sh-Control and sh-TUSC3 transfected hela cells.



HeLa cells were subjected to SDS PAGE followed by western blot with 67382-1-Ig (TUSC3 antibody) at dilution of 1:3000 incubated at room temperature for 1.5 hours.