

À des fins de recherche uniquement

Anticorps Monoclonal anti-ZG16

Numéro de catalogue: 67389-1-Ig **1 Publications**



Informations de base

Numéro de catalogue: 67389-1-Ig	Numéro d'acquisition GenBank: BC029149	Méthode de purification: Purification par protéine A
Taille: 150ul , Concentration: 1000 µg/ml by Nanodrop;	Identification du gène (NCBI): 653808	CloneNo.: 1A7B9
Hôte: Mouse	Nom complet: zymogen granule protein 16 homolog (rat)	Dilutions recommandées: WB 1:2000-1:10000 IHC 1:250-1:1000 IF 1:200-1:800
Isotype: IgG1	MW calculé: 167 aa, 18 kDa	
Immunogen Catalog Number: AG11332	MW observés: 16 kDa	

Applications

Applications testées:

IF, IHC, WB, ELISA

Demandes citées:

IHC

Spécificité de l'espèce:

Humain, porc, rat, souris

Espèces citées:

Humain

Contrôles positifs:

WB : tissu de côlon de souris, tissu de côlon de porc, tissu de côlon humain

IHC : tissu pancréatique de souris,

IF : tissu d'intestin grêle de souris,

Remarque-IHC: il est suggéré de démasquer l'antigène avec un tampon de TE buffer pH 9,0; (*) À défaut, 'le démasquage de l'antigène peut être 'effectué avec un tampon citrate pH 6,0.

Informations générales

Zymogen granule protein 16 (ZG16) has a Jacalin-like lectin domain, which is mainly expressed by mucus-secreting cells, including goblet cells in the intestine. It's reported that ZG16 expression was significantly decreased in colorectal cancer compared to normal tissue. ZG16 gene expression and copy number variations (CNV) were associated with multiple molecular and clinicopathological features of CRC including MSI, MLH1 silencing and so on. It's found that ZG16 is negatively correlated with lymphatic invasive and distant metastasis. Besides, overexpression of ZG16 blocks PD-L1 expression in colorectal cancer, and promotes NK cells survival and proliferation. Very importantly, ZG16 suppresses colorectal tumor growth via the immune system. (PMID: 33360840, 21893569)

Publications notables

Autrice	Pubmed ID	Journal	Application
Aojia Zhuang	37158593	Elife	IHC

Stockage

Stockage:

Stocker à -20°C. Stable pendant un an après l'expédition.

Tampon de stockage:

PBS avec azoture de sodium à 0,02 % et glycérol à 50 % pH 7,3

L'aliquotage n'est pas nécessaire pour le stockage à -20C

***** Les 20ul contiennent 0,1% de BSA.**

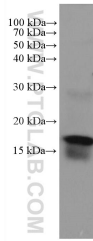
For technical support and original validation data for this product please contact:

T: 1 (888) 4PTGLAB (1-888-478-4522) (toll free in USA), or 1(312) 455-8498 (outside USA)

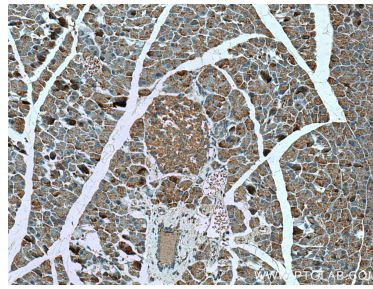
E: proteintech@ptglab.com
W: ptglab.com

This product is exclusively available under Proteintech Group brand and is not available to purchase from any other manufacturer.

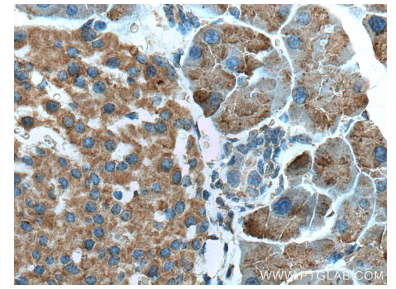
Données de validation sélectionnées



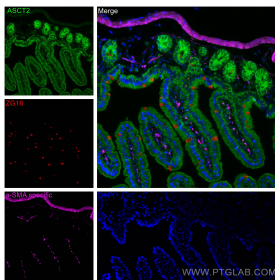
mouse colon tissue were subjected to SDS PAGE followed by western blot with 67389-1-Ig (ZG16 antibody) at dilution of 1:5000 incubated at room temperature for 1.5 hours.



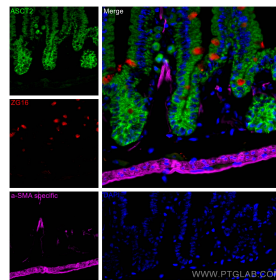
Immunohistochemical analysis of paraffin-embedded mouse pancreas tissue slide using 67389-1-Ig (ZG16 antibody) at dilution of 1:500 (under 10x lens). Heat mediated antigen retrieval with Tris-EDTA buffer (pH 9.0).



Immunohistochemical analysis of paraffin-embedded mouse pancreas tissue slide using 67389-1-Ig (ZG16 antibody) at dilution of 1:500 (under 40x lens). Heat mediated antigen retrieval with Tris-EDTA buffer (pH 9.0).



Immunofluorescent analysis of (4% PFA) fixed mouse small intestine tissue using ZG16 antibody (67389-1-Ig, Clone: 1A7B9) at dilution of 1:400 and CoraLite® 594-Conjugated AffiniPure Goat Anti-Mouse IgG(H+L), ASCT2 antibody (20350-1-AP, green), CoraLite® Plus 647 smooth muscle actin specific antibody (CL647-80008, Clone: 5H7, Magenta).



Immunofluorescent analysis of (4% PFA) fixed mouse small intestine tissue using ZG16 antibody (67389-1-Ig, Clone: 1A7B9) at dilution of 1:400 and CoraLite® 594-Conjugated AffiniPure Goat Anti-Mouse IgG(H+L), ASCT2 antibody (20350-1-AP, green), CoraLite® Plus 647 smooth muscle actin specific antibody (CL647-80008, Clone: 5H7, Magenta).