

À des fins de recherche uniquement

Anticorps Monoclonal anti-FGL1

Numéro de catalogue: 67391-1-Ig **1 Publications**



Informations de base

Numéro de catalogue: 67391-1-Ig	Numéro d'acquisition GenBank: BC007047	Méthode de purification: Purification par protéine G
Taille: 150ul, Concentration: 2569 µg/ml by Nanodrop and 913 µg/ml by Bradford method using BSA as the standard;	Identification du gène (NCBI): 2267	CloneNo.: 2B11C6
Hôte: Mouse	Nom complet: fibrinogen-like 1	Dilutions recommandées: WB 1:1000-1:5400 IHC 1:500-1:2000 IF 1:200-1:800
Isotype: IgG1	MW calculé: 312 aa, 36 kDa	
Immunogen Catalog Number: AG8581	MW observés: 36 kDa	

Applications

Applications testées:
FC, IF, IHC, WB, ELISA

Demandes citées:
WB

Spécificité de l'espèce:
Humain, porc

Espèces citées:
souris

Remarque-IHC: il est suggéré de démasquer l'antigène avec un tampon de TE buffer pH 9,0; (*) A défaut, 'le démasquage de l'antigène peut être 'effectué avec un tampon citrate pH 6,0.

Contrôles positifs:

WB : tissu hépatique de porc, tissu placentaire humain

IHC : tissu hépatique humain, tissu de cancer du foie humain, tissu pulmonaire humain

IF : cellules HepG2,

Informations générales

Fibrinogen-like 1 (FGL1), also termed hepatocyte-derived fibrinogen-related protein 1 (HFREP1) or hepassocin, is a predominantly liver expressed protein that has been implicated as both a hepatoprotectant and a hepatocyte mitogen. FGL1 expression is decreased in hepatocellular carcinoma (HCC), and it may play a role in the development of hepatocellular carcinomas.

Publications notables

Autrice	Pubmed ID	Journal	Application
Dafei Chai	34977338	Mol Ther Oncolytics	WB

Stockage

Stockage:
Stocker à -20 °C
Tampon de stockage:
PBS avec azoture de sodium à 0,02 % et glycérol à 50 % pH 7,3
L'aliquotage n'est pas nécessaire pour le stockage à -20C

*** Les 20ul contiennent 0,1% de BSA.

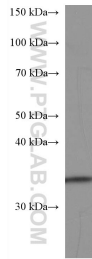
For technical support and original validation data for this product please contact:

T: 1 (888) 4PTGLAB (1-888-478-4522) (toll free in USA), or 1(312) 455-8498 (outside USA)

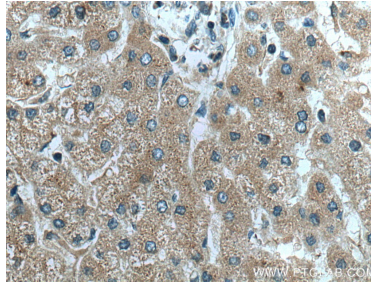
E: proteintech@ptglab.com
W: ptglab.com

This product is exclusively available under Proteintech Group brand and is not available to purchase from any other manufacturer.

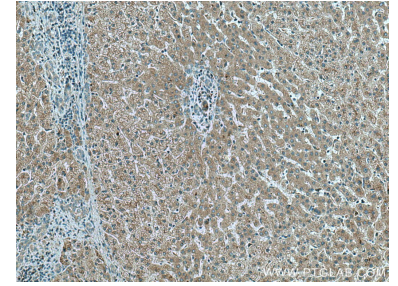
Données de validation sélectionnées



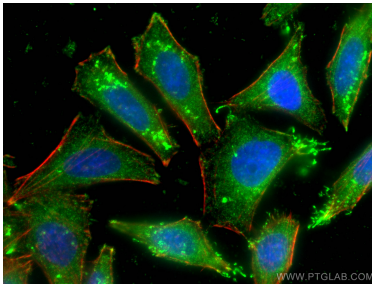
pig liver tissue were subjected to SDS PAGE followed by western blot with 67391-1-Ig (FGL1 antibody) at dilution of 1:2700 incubated at room temperature for 1.5 hours.



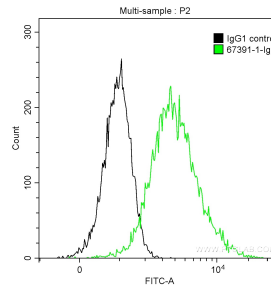
Immunohistochemical analysis of paraffin-embedded human liver tissue slide using 67391-1-Ig (FGL1 antibody) at dilution of 1:1000 (under 40x lens). Heat mediated antigen retrieval with Tris-EDTA buffer (pH 9.0).



Immunohistochemical analysis of paraffin-embedded human liver tissue slide using 67391-1-Ig (FGL1 antibody) at dilution of 1:1000 (under 10x lens). Heat mediated antigen retrieval with Tris-EDTA buffer (pH 9.0).



Immunofluorescent analysis of (-20°C Ethanol) fixed HepG2 cells using FGL1 antibody (67391-1-Ig, Clone: 2B11C6) at dilution of 1:400 and CoraLite@488-Conjugated AffiniPure Goat Anti-Mouse IgG(H+L), CL594-Phalloidin (red).



1×10^6 HepG2 cells were intracellularly stained with 0.2 ug Anti-Human FGL1 (67391-1-Ig, Clone:2B11C6) and CoraLite@488-Conjugated AffiniPure Goat Anti-Mouse IgG(H+L) at dilution 1:1000 (green), and 0.2 ug Mouse IgG1 Isotype Control (66360-1-Ig, Clone: T1F8D3F10) (black). Cells were fixed with 4% PFA and permeabilized with 0.1% TritonX-100.