

À des fins de recherche uniquement

Anticorps Monoclonal anti-PPP4R1

Numéro de catalogue: 67392-1-Ig



Informations de base

Numéro de catalogue: 67392-1-Ig	Numéro d'acquisition GenBank: BC060829	Méthode de purification: Purification par protéine G
Taille: 150ul, Concentration: 1800 µg/ml by 9989 Nanodrop and 1000 µg/ml by Bradford method using BSA as the standard;	Identification du gène (NCBI): 9989	CloneNo.: 3D12G12
Hôte: Mouse	Nom complet: protein phosphatase 4, regulatory subunit 1	Dilutions recommandées: WB 1:2000-1:6000 IHC 1:250-1:1000 IF 1:200-1:800
Isotype: IgG1	MW calculé: 107 kDa	
Immunogen Catalog Number: AG26750	MW observés: 120-130 kDa	

Applications

Applications testées:
FC, IF, IHC, WB, ELISA

Spécificité de l'espèce:
Humain, rat, souris

Remarque-IHC: il est suggéré de démasquer l'antigène avec un tampon de TE buffer pH 9.0; (*) À défaut, le démasquage de l'antigène peut être effectué avec un tampon citrate pH 6,0.

Contrôles positifs:

WB : cellules HeLa, cellules HEK-293, cellules HSC-T6, cellules Jurkat

IHC : tissu de cancer du foie humain,

IF : tissu de cancer du foie humain,

Informations générales

Stockage

Stockage:
Stocker à -20°C. Stable pendant un an après l'expédition.
Tampon de stockage:
PBS avec azoture de sodium à 0,02 % et glycérol à 50 % pH 7,3
L'aliquotage n'est pas nécessaire pour le stockage à -20C

*** Les 20ul contiennent 0,1% de BSA.

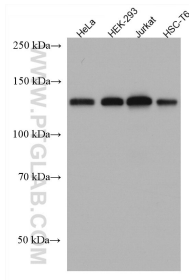
For technical support and original validation data for this product please contact:

T: 1 (888) 4PTGLAB (1-888-478-4522) (toll free in USA), or 1(312) 455-8498 (outside USA)

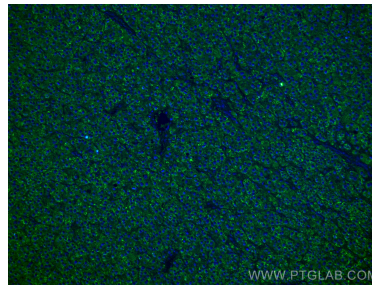
E: proteintech@ptglab.com
W: ptglab.com

This product is exclusively available under Proteintech Group brand and is not available to purchase from any other manufacturer.

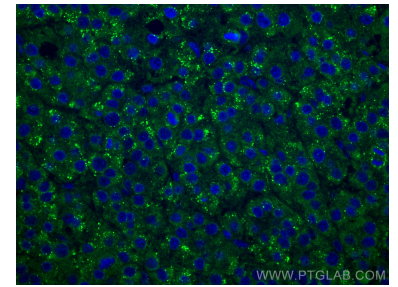
Données de validation sélectionnées



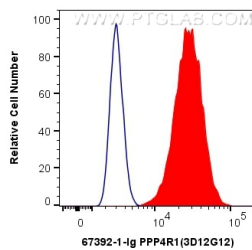
Various lysates were subjected to SDS PAGE followed by western blot with 67392-1-Ig (PPP4R1 antibody) at dilution of 1:3000 incubated at room temperature for 1.5 hours.



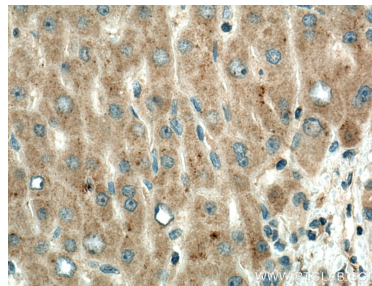
Immunofluorescent analysis of (4% PFA) fixed human liver cancer tissue using PPP4R1 antibody (67392-1-Ig, Clone: 3D12G12) at dilution of 1:400 and CoraLite@488-Conjugated AffiniPure Goat Anti-Mouse IgG(H+L).



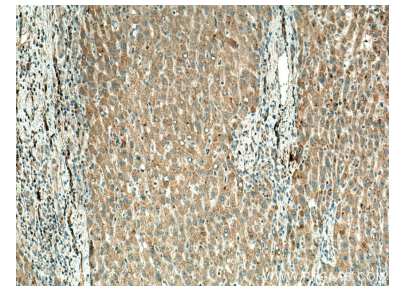
Immunofluorescent analysis of (4% PFA) fixed human liver cancer tissue using PPP4R1 antibody (67392-1-Ig, Clone: 3D12G12) at dilution of 1:400 and CoraLite@488-Conjugated AffiniPure Goat Anti-Mouse IgG(H+L).



1×10^6 HeLa cells were intracellularly stained with 0.4 ug Anti-Human PPP4R1 (67392-1-Ig, Clone:3D12G12) and CoraLite@488-Conjugated AffiniPure Goat Anti-Mouse IgG(H+L) at dilution 1:1000 (red), or 0.4 ug Control Antibody. Cells were fixed with 4% PFA and permeabilized with Flow Cytometry Perm Buffer (PF00011-C).



Immunohistochemical analysis of paraffin-embedded human liver cancer tissue slide using 67392-1-Ig (PPP4R1 antibody) at dilution of 1:500 (under 40x lens). Heat mediated antigen retrieval with Tris-EDTA buffer (pH 9.0).



Immunohistochemical analysis of paraffin-embedded human liver cancer tissue slide using 67392-1-Ig (PPP4R1 antibody) at dilution of 1:500 (under 10x lens). Heat mediated antigen retrieval with Tris-EDTA buffer (pH 9.0).