

À des fins de recherche uniquement

# Anticorps Monoclonal anti-Chicken IgY



Numéro de catalogue: 67405-1-Ig **1 Publications**

## Informations de base

<b>Numéro de catalogue:</b> 67405-1-Ig	<b>Numéro d'acquisition GenBank:</b> Identification du gène (NCBI):	<b>Méthode de purification:</b> Purification par protéine A
<b>Taille:</b> 150ul , Concentration: 2609 µg/ml by Nanodrop and 1000 µg/ml by Bradford method using BSA as the standard;	<b>Nom complet:</b> <b>MW observés:</b> 180 kDa, 70 kDa	<b>CloneNo.:</b> 1E12G2
<b>Hôte:</b> Mouse		<b>Dilutions recommandées:</b> WB 1:5000-1:50000
<b>Isotype:</b> IgG2a		

## Applications

<b>Applications testées:</b> WB, ELISA	<b>Contrôles positifs:</b> WB : IgY de poulet, œuf de poulet
<b>Spécificité de l'espèce:</b> poulet	

## Informations générales

IgY (immunoglobulin Y) is a type of immunoglobulin found in birds and reptiles. High concentration of IgY exists in chicken egg yolk. In chickens, IgY is functional same to IgG. IgY antibodies do not cross-react with Fc receptors, mammalian immunoglobulins such as rheumatoid factors and HAMA or activate the complement system thus could reduce false positive results in immunological assays. This antibody was generated from chicken IgY that extracted from chicken eggs. This product recognizes the heavy chain of chicken IgY and can detect the contact form of chicken IgY (~180 kDa) and reduced form (~70 kDa).

## Publications notables

Autrice	Pubmed ID	Journal	Application
Hao Li	35550770	Carbohydr Polym	

## Stockage

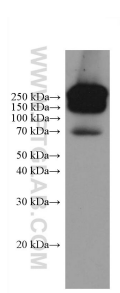
**Stockage:**  
Stocker à -20 °C  
**Tampon de stockage:**  
PBS avec azoture de sodium à 0,02 % et glycérol à 50 % pH 7,3  
L'aliquotage n'est pas nécessaire pour le stockage à -20C

**\*\*\* Les 20ul contiennent 0,1% de BSA.**

For technical support and original validation data for this product please contact:  
T: 1 (888) 4PTGLAB (1-888-478-4522) (toll free in USA), or 1(312) 455-8498 (outside USA)  
E: proteintech@ptglab.com  
W: ptglab.com

This product is exclusively available under Proteintech Group brand and is not available to purchase from any other manufacturer.

## Données de validation sélectionnées



100 nL chicken egg were subjected to SDS-PAGE at non-reducing condition followed by western blot with 67405-1-Ig (chicken IgY antibody) at dilution of 1:10000 incubated at room temperature for 1.5 hours.