

À des fins de recherche uniquement

# Anticorps Monoclonal anti-VEGFR2

Numéro de catalogue: 67407-1-Ig **5 Publications**



## Informations de base

Numéro de catalogue:	67407-1-Ig	Numéro d'acquisition GenBank:	BC131822	Méthode de purification:	Purification par protéine G
Taille:	150ul , Concentration: 2100 µg/ml by Nanodrop and 1000 µg/ml by Bradford method using BSA as the standard;	Identification du gène (NCBI):	3791	CloneNo.:	1G2A8
Hôte:	Mouse	Nom complet:	kinase insert domain receptor (a type III receptor tyrosine kinase)	Dilutions recommandées:	WB 1:1000-1:8000
Isotype:	IgG1	MW calculé:	1356 aa, 152 kDa		
Immunogen Catalog Number:	AG24589	MW observés:	230 kDa		

## Applications

### Applications testées:

FC, WB, ELISA

### Demandes citées:

IF, IHC, WB

### Spécificité de l'espèce:

Humain

### Espèces citées:

Humain

### Contrôles positifs:

WB : tissu placentaire humain,

## Informations générales

KDR, also named as VEGFR-2, FLK1 and CD309, is a receptor for VEGF or VEGFC. KDR which belongs to the protein kinase superfamily, has a tyrosine-protein kinase activity. The VEGF-kinase ligand/receptor signaling system plays a key role in vascular development and regulation of vascular permeability. In case of HIV-1 infection, the interaction with extracellular viral Tat protein seems to enhance angiogenesis in Kaposi's sarcoma lesions. KDR functions as the main mediator of VEGF-induced endothelial proliferation, survival, migration, tubular morphogenesis and sprouting. Mutations of this gene are implicated in infantile capillary hemangiomas.

## Publications notables

Autrice	Pubmed ID	Journal	Application
Xiaofeng Dai	31636652	Front Genet	WB
Hongwei Jin	34150622	Front Oncol	WB
Hou-Fu Xia	35916917	Cell Tissue Res	IHC, IF

## Stockage

### Stockage:

Stocker à -20 °C

### Tampon de stockage:

PBS avec azoture de sodium à 0,02 % et glycérol à 50 % pH 7,3

L'aliquotage n'est pas nécessaire pour le stockage à -20C

**\*\*\* Les 20ul contiennent 0,1% de BSA**

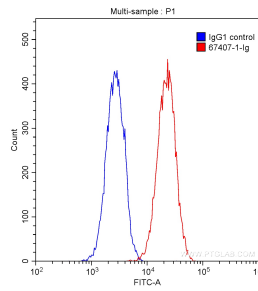
For technical support and original validation data for this product please contact:

T: 1 (888) 4PTGLAB (1-888-478-4522) (toll free in USA), or 1(312) 455-8498 (outside USA)

E: proteintech@ptglab.com  
W: ptglab.com

**This product is exclusively available under Proteintech Group brand and is not available to purchase from any other manufacturer.**

## Données de validation sélectionnées



human placenta tissue were subjected to SDS PAGE followed by western blot with 67407-1-Ig (VEGFR2 antibody) at dilution of 1:4000 incubated at room temperature for 1.5 hours.

$1 \times 10^6$  HUVEC cells were intracellularly stained with 0.20 ug/test Anti-Human VEGFR2 (67407-1-Ig, Clone:1G2A8) (red) or 0.20 ug Mouse IgG1 Isotype Control(66360-1-Ig, CloneT1F8D3F10) (blue) and CoraLite®488-Conjugated AffiniPure Goat Anti-Mouse IgG(H+L) with dilution 1:1000. Fixed with 90% MeOH.