

À des fins de recherche uniquement

Anticorps Monoclonal anti-MAT1A

Numéro de catalogue: 67408-1-Ig



Informations de base

Numéro de catalogue: 67408-1-Ig	Numéro d'acquisition GenBank: BC018359	Méthode de purification: Purification par protéine A
Taille: 150ul , Concentration: 1600 µg/ml by Nanodrop and 1000 µg/ml by Bradford method using BSA as the standard;	Identification du gène (NCBI): 4143	CloneNo.: 2F1C1
Hôte: Mouse	Nom complet: methionine adenosyltransferase I, alpha	Dilutions recommandées: WB 1:1000-1:6000 IF 1:400-1:1600
Isotype: IgG2a	MW calculé 395 aa, 44 kDa	
Immunogen Catalog Number: AG3076	MW observés: 49 kDa	

Applications

Applications testées:
IF, WB, ELISA

Spécificité de l'espèce:
Humain, rat, souris

Contrôles positifs:

WB : cellules HepG2, cellules 4T1, cellules HeLa,
cellules HSC-T6, cellules Jurkat, cellules MCF-7,
cellules NIH/3T3

IF : cellules HeLa,

Informations générales

Methionine adenosyltransferase (MAT) is the enzyme that catalyzes the synthesis of S-adenosylmethionine (AdoMet), the main donor of methyl groups in the cell. In mammals MAT is encoded by two different genes, MAT1A and MAT2A. MAT1A is expressed only in the mature liver whereas fetal hepatocytes, extrahepatic tissues and liver cancer cells express MAT2A.

Stockage

Stockage:

Stocker à -20°C. Stable pendant un an après l'expédition.

Tampon de stockage:

PBS avec azoture de sodium à 0,02 % et glycérol à 50 % pH 7,3

L'aliquotage n'est pas nécessaire pour le stockage à -20C

*** Les 20ul contiennent 0,1% de BSA.

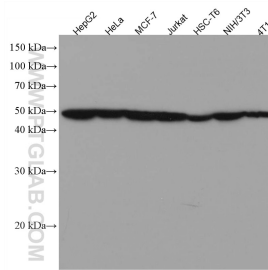
For technical support and original validation data for this product please contact:

T: 1 (888) 4PTGLAB (1-888-478-4522) (toll free
in USA), or 1(312) 455-8498 (outside USA)

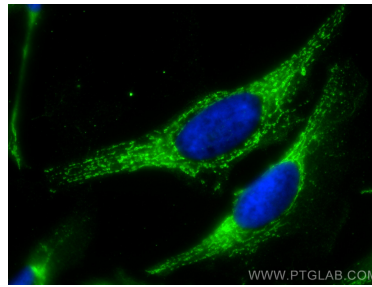
E: proteintech@ptglab.com
W: ptglab.com

This product is exclusively available under Proteintech Group brand and is not available to purchase from any other manufacturer.

Données de validation sélectionnées



Various lysates were subjected to SDS PAGE followed by western blot with 67408-1-Ig (MAT1A antibody) at dilution of 1:3000 incubated at room temperature for 1.5 hours.



Immunofluorescent analysis of (-20°C Methanol) fixed HeLa cells using MAT1A antibody (67408-1-Ig, Clone: 2F1C1) at dilution of 1:800 and CoraLite®488-Conjugated AffiniPure Goat Anti-Mouse IgG(H+L).