

À des fins de recherche uniquement

Anticorps Monoclonal anti-MEK2

Numéro de catalogue: 67410-1-Ig **5 Publications**



Informations de base

| | | |
|--|--|---|
| Numéro de catalogue: 67410-1-Ig | Numéro d'acquisition GenBank: BC018645 | Méthode de purification: Purification par protéine G |
| Taille: 150ul , Concentration: 1000 µg/ml by Bradford method using BSA as the standard; | Identification du gène (NCBI): 5605 | CloneNo.: 1H8C2 |
| Hôte: Mouse | Nom complet: mitogen-activated protein kinase kinase 2 | Dilutions recommandées: WB 1:5000-1:50000 IHC 1:1000-1:4000 IF 1:200-1:800 |
| Isotype: IgG1 | MW calculé 44 kDa | |
| Immunogen Catalog Number: AG29871 | MW observés: 44-47 kDa | |

Applications

Applications testées:

IF, IHC, WB, ELISA

Demandes citées:

WB

Spécificité de l'espèce:

Humain, rat, souris

Espèces citées:

Humain, souris

Remarque-IHC: il est suggéré de démasquer l'antigène avec un tampon de TE buffer pH 9,0; (*) A défaut, 'le démasquage de l'antigène peut être 'effectué avec un tampon citrate pH 6,0.

Contrôles positifs:

WB : cellules HEK-293, 4T1, cellules HeLa, cellules HepG2, cellules HSC-T6, cellules Jurkat, cellules K-562, cellules Neuro-2a, cellules NIH/3T3, cellules PC-12

IHC : tissu de cancer du foie humain,

IF : cellules HeLa,

Informations générales

MEK2(MAPK/ERK kinase 2) is also named as MAP2K2, MKK2, PRKMK2 and belongs to the MAP kinase kinase subfamily. MAPKK is itself dependent on Ser/Thr phosphorylation for activity catalyzed by MAP kinase kinase kinases (RAF or MEKK1). MEK1 and MEK2 are closely related, dual-specificity tyrosine/threonine protein kinases found in the Ras/Raf/MEK/ERK mitogen-activated protein kinase (MAPK) signaling pathway.

Publications notables

| Autrice | Pubmed ID | Journal | Application |
|-----------|-----------|------------------------------|-------------|
| Qi Chen | 35796909 | Mol Cell Biochem | WB |
| Zehua Zuo | 35899070 | PNAS Nexus | WB |
| Qing Wang | 32843616 | Signal Transduct Target Ther | WB |

Stockage

Stockage:

Stocker à -20 °C.

Tampon de stockage:

PBS avec azoture de sodium à 0,02 % et glycérol à 50 % pH 7,3

L'aliquotage n'est pas nécessaire pour le stockage à -20C

***** Les 20ul contiennent 0,1% de BSA.**

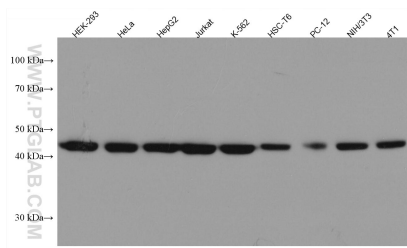
For technical support and original validation data for this product please contact:

T: 1 (888) 4PTGLAB (1-888-478-4522) (toll free in USA), or 1(312) 455-8498 (outside USA)

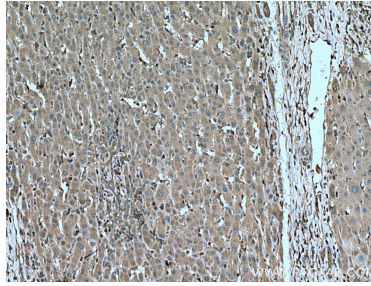
E: proteintech@ptglab.com
W: ptglab.com

This product is exclusively available under Proteintech Group brand and is not available to purchase from any other manufacturer.

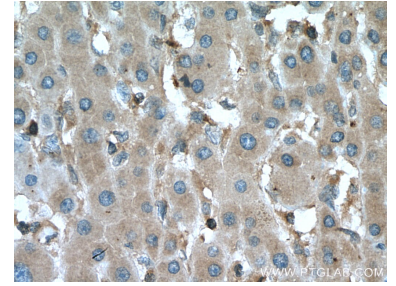
Données de validation sélectionnées



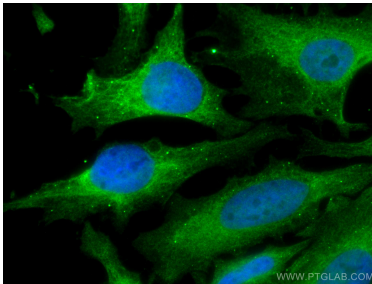
Various lysates were subjected to SDS PAGE followed by western blot with 67410-1-Ig (MAP2K2 antibody) at dilution of 1:20000 incubated at room temperature for 1.5 hours.



Immunohistochemical analysis of paraffin-embedded human liver cancer tissue slide using 67410-1-Ig (MAP2K2 antibody) at dilution of 1:2000 (under 10x lens). Heat mediated antigen retrieval with Tris-EDTA buffer (pH 9.0).



Immunohistochemical analysis of paraffin-embedded human liver cancer tissue slide using 67410-1-Ig (MAP2K2 antibody) at dilution of 1:2000 (under 40x lens). Heat mediated antigen retrieval with Tris-EDTA buffer (pH 9.0).



Immunofluorescent analysis of (4% PFA) fixed HeLa cells using MAP2K2 antibody (67410-1-Ig, Clone: 1H8C2) at dilution of 1:400 and CoraLite®488-Conjugated AffiniPure Goat Anti-Mouse IgG(H+L).