

À des fins de recherche uniquement

# Anticorps Monoclonal anti-CAP2

Numéro de catalogue: 67412-1-Ig



## Informations de base

Numéro de catalogue: 67412-1-Ig	Numéro d'acquisition GenBank: BC008481	Méthode de purification: Purification par protéine A
Taille: 150ul , Concentration: 1800 µg/ml by Nanodrop and 1000 µg/ml by Bradford method using BSA as the standard;	Identification du gène (NCBI): 10486	CloneNo.: 1G7D2
Hôte: Mouse	Nom complet: CAP, adenylate cyclase-associated protein, 2 (yeast)	Dilutions recommandées: WB 1:2000-1:10000
Isotype: IgG2a	MW calculé 477 aa, 53 kDa	
Immunogen Catalog Number: AG8622	MW observés: 51-53 kDa	

## Applications

Applications testées: WB, ELISA	Contrôles positifs: WB : cellules A549, cellules COLO 320, cellules HeLa, cellules HepG2, cellules PC-3
Spécificité de l'espèce: Humain	

## Informations générales

CAPs (CAP1 and CAP2) are evolutionarily conserved proteins with roles in regulating the actin cytoskeleton and in signal transduction. CAP2 is predominantly expressed in brain, heart and skeletal muscle, and skin. It is found in the nucleus in undifferentiated myoblasts and at the M-Line of differentiated myotubes. Overexpression of CAP2 has been reported in many cancers, including hepatocellular carcinoma (HCC), human breast cancer, and malignant melanoma.

## Stockage

Stockage:  
Stocker à -20°C. Stable pendant un an après l'expédition.  
Tampon de stockage:  
PBS avec azoture de sodium à 0,02 % et glycérol à 50 % pH 7,3  
L'aliquotage n'est pas nécessaire pour le stockage à -20C

\*\*\* Les 20ul contiennent 0,1% de BSA.

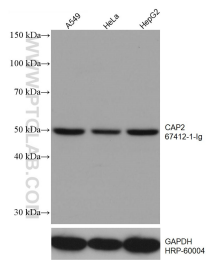
For technical support and original validation data for this product please contact:

T: 1 (888) 4PTGLAB (1-888-478-4522) (toll free  
in USA), or 1(312) 455-8498 (outside USA)

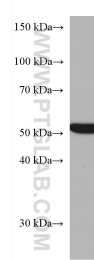
E: [proteintech@ptglab.com](mailto:proteintech@ptglab.com)  
W: [ptglab.com](http://ptglab.com)

This product is exclusively available under Proteintech Group brand and is not available to purchase from any other manufacturer.

## Données de validation sélectionnées



Various lysates were subjected to SDS PAGE followed by western blot with 67412-1-Ig (CAP2 antibody) at dilution of 1:5000 incubated at room temperature for 1.5 hours. The membrane was stripped and reblotted with HRP-conjugated GAPDH Monoclonal antibody (HRP-60004) as loading control.



HepG2 cells were subjected to SDS PAGE followed by western blot with 67412-1-Ig (CAP2 antibody) at dilution of 1:3000 incubated at room temperature for 1.5 hours.