

À des fins de recherche uniquement

Anticorps Monoclonal anti-CYP2W1

Numéro de catalogue: 67419-1-Ig **Phare**



Informations de base

Numéro de catalogue: 67419-1-Ig	Numéro d'acquisition GenBank: BC025761	Méthode de purification: Purification par protéine G
Taille: 150ul , Concentration: 2000 µg/ml by Nanodrop;	Identification du gène (NCBI): 54905	CloneNo.: 2B10H2
Hôte: Mouse	Nom complet: cytochrome P450, family 2, subfamily WB 1:5000-1:30000 W, polypeptide 1	Dilutions recommandées:
Isotype: IgG1	MW calculé 54 kDa	
Immunogen Catalog Number: AG29982	MW observés: 45-54 kDa	

Applications

Applications testées:
WB, ELISA

Spécificité de l'espèce:
Humain, rat, souris

Contrôles positifs:

WB : cellules HeLa, cellules HEK-293, cellules HepG2, cellules HSC-T6, cellules Jurkat, cellules NIH/3T3, cellules RAW 264.7

Informations générales

Cytochrome P450s have been proposed to be of importance both in carcinogenesis, by activating precarcinogens, and as determinants of cancer chemotherapy, where they participate in activation or inactivation of anti-cancer drugs. CYP2W1 is exclusively expressed in transformed tissue in the adult human, mainly in colon tumors. It is a potential drug target in cancer therapy. CYP2W1 has a molecular weight of 52-54 kDa, and 30/45 kDa of potential isoforms.

Stockage

Stockage:
Stocker à -20°C. Stable pendant un an après l'expédition.

Tampon de stockage:
PBS avec azoture de sodium à 0,02 % et glycérol à 50 % pH 7,3
L'aliquotage n'est pas nécessaire pour le stockage à -20C

***** Les 20ul contiennent 0,1% de BSA.**

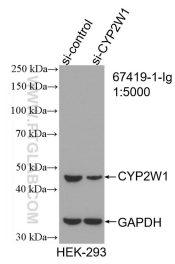
For technical support and original validation data for this product please contact:

T: 1 (888) 4PTGLAB (1-888-478-4522) (toll free in USA), or 1(312) 455-8498 (outside USA)

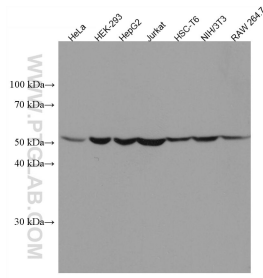
E: proteintech@ptglab.com
W: ptglab.com

This product is exclusively available under Proteintech Group brand and is not available to purchase from any other manufacturer.

Données de validation sélectionnées



WB result of CYP2W1 antibody (67419-1-Ig; 1:5000; incubated at room temperature for 1.5 hours) with sh-Control and sh-CYP2W1 transfected HEK-293 cells.



Various lysates were subjected to SDS PAGE followed by western blot with 67419-1-Ig (CYP2W1 antibody) at dilution of 1:10000 incubated at room temperature for 1.5 hours.