

À des fins de recherche uniquement

Anticorps Monoclonal anti-CYP21A2

Numéro de catalogue: 67421-1-Ig



Informations de base

Numéro de catalogue: 67421-1-Ig	Numéro d'acquisition GenBank: NM_000500	Méthode de purification: Purification par protéine A
Taille: 150ul, Concentration: 2100 µg/ml by Nanodrop and 1000 µg/ml by Bradford method using BSA as the standard;	Identification du gène (NCBI): 1589	CloneNo.: 1G2G6
Hôte: Mouse	Nom complet: cytochrome P450, family 21, subfamily A, polypeptide 2	Dilutions recommandées: WB 1:2000-1:10000 IF 1:400-1:1600
Isotype: IgG1	MW calculé 56 kDa	
Immunogen Catalog Number: AG26292	MW observés: 53-56 kDa	

Applications

Applications testées: IF, WB, ELISA	Contrôles positifs:
Spécificité de l'espèce: Humain, porc	WB : cellules HepG2, cellules PC-12, tissu de glande surrénale de porc IF : cellules PC-12,

Informations générales

Stockage

Stockage:
Stocker à -20°C. Stable pendant un an après l'expédition.
Tampon de stockage:
PBS avec azoture de sodium à 0,02 % et glycérol à 50 % pH 7,3
L'aliquotage n'est pas nécessaire pour le stockage à -20C

*** Les 20ul contiennent 0,1% de BSA.

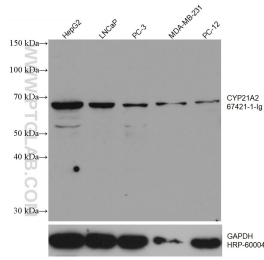
For technical support and original validation data for this product please contact:

T: 1 (888) 4PTGLAB (1-888-478-4522) (toll free
in USA), or 1(312) 455-8498 (outside USA)

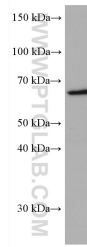
E: proteintech@ptglab.com
W: ptglab.com

This product is exclusively available under Proteintech Group brand and is not available to purchase from any other manufacturer.

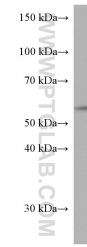
Données de validation sélectionnées



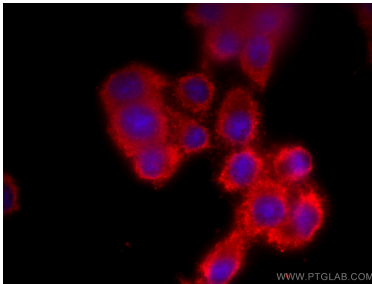
Various lysates were subjected to SDS PAGE followed by western blot with 67421-1-Ig (CYP21A2 antibody) at dilution of 1:5000 incubated at room temperature for 1.5 hours. The membrane was stripped and reblotted with HRP-conjugated GAPDH Monoclonal antibody (HRP-60004) as loading control.



PC-12 cells were subjected to SDS PAGE followed by western blot with 67421-1-Ig (CYP21A2 antibody) at dilution of 1:3000 incubated at room temperature for 1.5 hours.



pig adrenal gland tissue were subjected to SDS PAGE followed by western blot with 67421-1-Ig (CYP21A2 antibody) at dilution of 1:3000 incubated at room temperature for 1.5 hours.



Immunofluorescent analysis of (-20°C Methanol) fixed PC-12 cells using CYP21A2 antibody (67421-1-Ig, Clone: 1G2G6) at dilution of 1:800 and CoraLite®594-Conjugated AffiniPure Goat Anti-Mouse IgG(H+L).