

À des fins de recherche uniquement

Anticorps Monoclonal anti-KLK11

Numéro de catalogue: 67427-1-Ig **1 Publications**



Informations de base

Numéro de catalogue: 67427-1-Ig	Numéro d'acquisition GenBank: BC022068	Méthode de purification: Purification par protéine G
Taille: 150ul , Concentration: 2000 µg/ml by Nanodrop and 1000 µg/ml by Bradford method using BSA as the standard;	Identification du gène (NCBI): 11012	CloneNo.: 1E2B4
Hôte: Mouse	Nom complet: kallikrein-related peptidase 11	Dilutions recommandées: WB 1:1000-1:6000 IHC 1:500-1:2000 IF 1:200-1:800
Isotype: IgG1	MW calculé: 250 aa, 27 kDa	
Immunogen Catalog Number: AG29895	MW observés: 30-40 kDa	

Applications

Applications testées:

IF, IHC, WB, ELISA

Demandes citées:

WB

Spécificité de l'espèce:

Humain, porc, rat

Espèces citées:

Humain

Remarque-IHC: il est suggéré de démasquer l'antigène avec un tampon de TE buffer pH 9,0; (*) A défaut, 'le démasquage de l'antigène peut être effectué avec un tampon citrate pH 6,0.

Contrôles positifs:

WB : cellules DU 145, cellules Jurkat, cellules LNCaP, cellules PC-3, tissu cérébral de porc, tissu cérébral de rat

IHC : tissu de cancer du sein humain, tissu de cancer de la prostate humain

IF : tissu de cancer du sein humain,

Informations générales

KLK11(Kallikrein-11) is also named as PRSS20, TLSP and belongs to the peptidase S1 family and Kallikrein subfamily. It is a multifunctional protease cleaving several substrates for kallikrein and trypsin and involved in normal physiology processes in bronchus. This full length protein has a signal peptide, a propeptide and four glycosylation sites. It has 4 isoforms produced by alternative splicing with the molecular weight of 31 kDa, 27 kDa, 34 kDa and 30 kDa.

Publications notables

Autrice	Pubmed ID	Journal	Application
Ruimin Zhao	33420975	J Bioenerg Biomembr	WB

Stockage

Stockage:

Stocker à -20 °C

Tampon de stockage:

PBS avec azoture de sodium à 0,02 % et glycérol à 50 % pH 7,3

L'aliquotage n'est pas nécessaire pour le stockage à -20C

*** Les 20ul contiennent 0,1% de BSA.

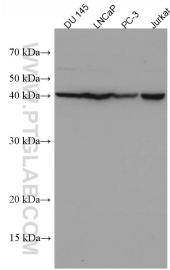
For technical support and original validation data for this product please contact:

T: 1 (888) 4PTGLAB (1-888-478-4522) (toll free in USA), or 1(312) 455-8498 (outside USA)

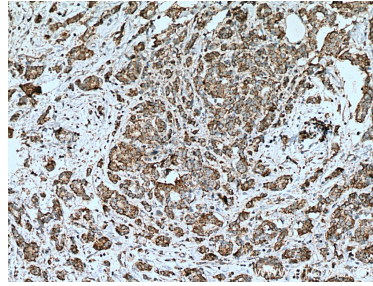
E: proteintech@ptglab.com
W: ptglab.com

This product is exclusively available under Proteintech Group brand and is not available to purchase from any other manufacturer.

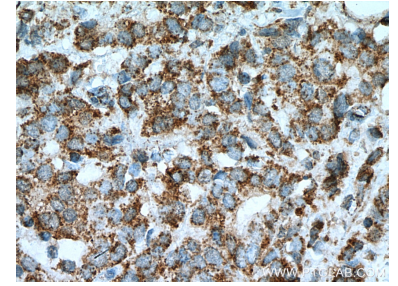
Données de validation sélectionnées



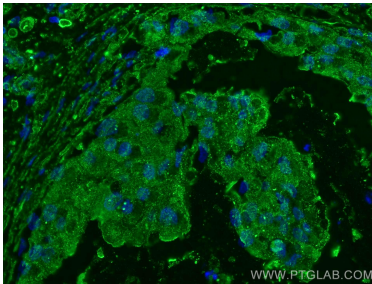
Various lysates were subjected to SDS PAGE followed by western blot with 67427-1-Ig (KLK11 antibody) at dilution of 1:3000 incubated at room temperature for 1.5 hours.



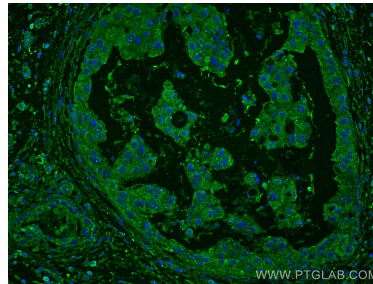
Immunohistochemical analysis of paraffin-embedded human breast cancer tissue slide using 67427-1-Ig (KLK11 antibody) at dilution of 1:1000 (under 10x lens). Heat mediated antigen retrieval with Tris-EDTA buffer (pH 9.0).



Immunohistochemical analysis of paraffin-embedded human breast cancer tissue slide using 67427-1-Ig (KLK11 antibody) at dilution of 1:1000 (under 40x lens). Heat mediated antigen retrieval with Tris-EDTA buffer (pH 9.0).



Immunofluorescent analysis of (4% PFA) fixed human breast cancer tissue using KLK11 antibody (67427-1-Ig, Clone: 1E2B4) at dilution of 1:400 and CoraLite®488-Conjugated AffiniPure Goat Anti-Mouse IgG(H+L).



Immunofluorescent analysis of (4% PFA) fixed human breast cancer tissue using KLK11 antibody (67427-1-Ig, Clone: 1E2B4) at dilution of 1:400 and CoraLite®488-Conjugated AffiniPure Goat Anti-Mouse IgG(H+L).