

À des fins de recherche uniquement

# Anticorps Monoclonal anti-Podoplanin



Numéro de catalogue: 67432-1-Ig **3 Publications**

## Informations de base

Numéro de catalogue: 67432-1-Ig	Numéro d'acquisition GenBank: BC022812	Méthode de purification: Purification par protéine A
Taille: 150ul , Concentration: 1900 µg/ml by Nanodrop and 1000 µg/ml by Bradford method using BSA as the standard;	Identification du gène (NCBI): 10630	CloneNo.: 1D9F3
Hôte: Mouse	Nom complet: podoplanin	Dilutions recommandées: IHC 1:2000-1:8000
Isotype: IgG2a	MW calculé 238 aa, 25 kDa	
Immunogen Catalog Number: AG17691		

## Applications

### Applications testées:

IHC, ELISA

### Demandes citées:

IHC, WB

### Spécificité de l'espèce:

Humain

### Espèces citées:

Humain

**Remarque-IHC: il est suggéré de démasquer l'antigène avec un tampon de TE buffer pH 9,0; (\*) A défaut, 'le démasquage de l'antigène peut être 'effectué avec un tampon citrate pH 6,0.**

### Contrôles positifs:

IHC : tissu d'amygdalite humain, tissu d'appendicite humain, tissu de côlon humain

## Informations générales

Podoplanin was identified as a glycoprotein found in the cell membranes of glomerular epithelial cells (podocyte) (PMID: 9327748). It is a lymphatic marker because the expression of podoplanin has been detected in lymphatic but not blood vascular endothelium, and is useful as the marker of tumor-associated lymphangiogenesis. Podoplanin has a function in developing testis, most likely at the level of cell-cell interactions among pre-meiotic germ cells and immature Sertoli cells. It may be involved in cell migration and/or actin cytoskeleton organization. When expressed in keratinocytes, PDPN induces changes in cell morphology with transfected cells showing an elongated shape, numerous membrane protrusions, major reorganization of the actin cytoskeleton, increased motility and decreased cell adhesion. It is required for normal lung cell proliferation and alveolus formation at birth. PDPN induces platelet aggregation. It does not have any effect on folic acid or amino acid transport and does not function as a water channel or as a regulator of aquaporin-type water channels. The antibody is specific to Podoplanin.

## Publications notables

Autrice	Pubmed ID	Journal	Application
Zhaoting Yang	33129761	Am J Pathol	IHC
Qiqiao Du	35597782	Cell Death Dis	IHC
Ruoxin Du	36812747	Drug Resist Updat	WB

## Stockage

### Stockage:

Stocker à -20 °C.

### Tampon de stockage:

PBS avec azoture de sodium à 0,02 % et glycérol à 50 % pH 7,3

L'aliquotage n'est pas nécessaire pour le stockage à -20C

\*\*\* Les 20ul contiennent 0,1% de BSA.

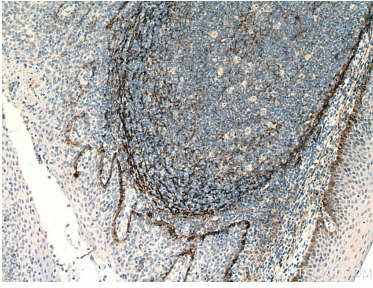
For technical support and original validation data for this product please contact:

T: 1 (888) 4PTGLAB (1-888-478-4522) (toll free in USA), or 1(312) 455-8498 (outside USA)

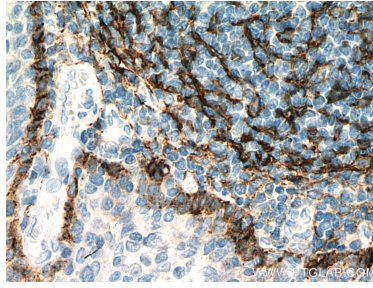
E: proteintech@ptglab.com  
W: ptglab.com

This product is exclusively available under Proteintech Group brand and is not available to purchase from any other manufacturer.

## Données de validation sélectionnées



Immunohistochemical analysis of paraffin-embedded human tonsillitis tissue slide using 67432-1-Ig (Podoplanin antibody) at dilution of 1:4000 (under 10x lens). Heat mediated antigen retrieval with Tris-EDTA buffer (pH 9.0).



Immunohistochemical analysis of paraffin-embedded human tonsillitis tissue slide using 67432-1-Ig (Podoplanin antibody) at dilution of 1:4000 (under 40x lens). Heat mediated antigen retrieval with Tris-EDTA buffer (pH 9.0).