

À des fins de recherche uniquement

# Anticorps Monoclonal anti-CYP20A1

Numéro de catalogue: 67433-1-Ig



## Informations de base

Numéro de catalogue: 67433-1-Ig	Numéro d'acquisition GenBank: BC020616	Méthode de purification: Purification par protéine G
Taille: 150ul , Concentration: 500 µg/ml by Bradford method using BSA as the standard;	Identification du gène (NCBI): 57404	CloneNo.: 2A9E2
Hôte: Mouse	Nom complet: cytochrome P450, family 20, subfamily A, polypeptide 1	Dilutions recommandées: WB 1:5000-1:50000 IHC 1:250-1:1000 IF 1:200-1:800
Isotype: IgG1	MW calculé 462 aa, 52 kDa	
Immunogen Catalog Number: AG9715	MW observés: 49-52 kDa	

## Applications

### Applications testées:

IF, IHC, WB, ELISA

### Spécificité de l'espèce:

Humain, rat, souris

**Remarque-IHC: il est suggéré de démasquer l'antigène avec un tampon de TE buffer pH 9.0; (\*) À défaut, le démasquage de l'antigène peut être effectué avec un tampon citrate pH 6,0.**

### Contrôles positifs:

WB : cellules LNCaP, cellules 4T1, cellules HEK-293, cellules HeLa, cellules HepG2, cellules HSC-T6, cellules Jurkat, cellules K-562, cellules Neuro-2a, cellules NIH/3T3

IHC : tissu de cancer du foie humain,

IF : cellules HeLa,

## Informations générales

### Stockage

#### Stockage:

Stocker à -20°C. Stable pendant un an après l'expédition.

#### Tampon de stockage:

PBS avec azoture de sodium à 0,02 % et glycérol à 50 % pH 7,3

L'aliquotage n'est pas nécessaire pour le stockage à -20C

\*\*\* Les 20ul contiennent 0,1% de BSA.

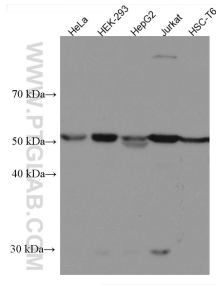
For technical support and original validation data for this product please contact:

T: 1 (888) 4PTGLAB (1-888-478-4522) (toll free  
in USA), or 1(312) 455-8498 (outside USA)

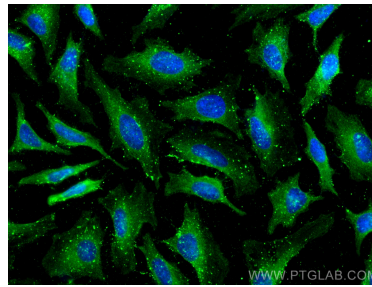
E: proteintech@ptglab.com  
W: ptglab.com

This product is exclusively available under Proteintech Group brand and is not available to purchase from any other manufacturer.

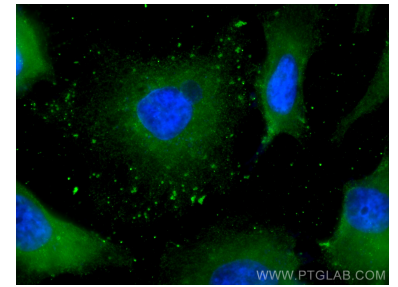
## Données de validation sélectionnées



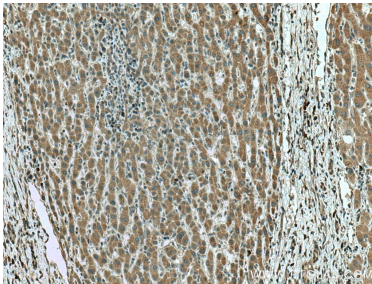
Various lysates were subjected to SDS PAGE followed by western blot with 67433-1-Ig (CYP20A1 antibody) at dilution of 1:5000 incubated at room temperature for 1.5 hours.



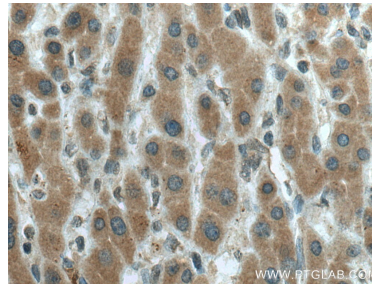
Immunofluorescent analysis of (-20°C Methanol) fixed HeLa cells using CYP20A1 antibody (67433-1-Ig, Clone: 2A9E2) at dilution of 1:400 and CoraLite®488-Conjugated AffiniPure Goat Anti-Mouse IgG(H+L).



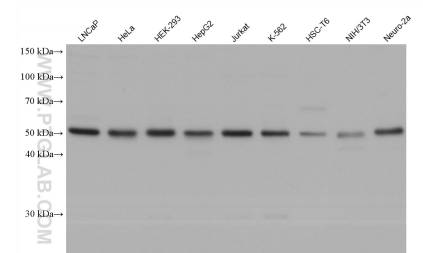
Immunofluorescent analysis of (-20°C Methanol) fixed HeLa cells using CYP20A1 antibody (67433-1-Ig, Clone: 2A9E2) at dilution of 1:400 and CoraLite®488-Conjugated AffiniPure Goat Anti-Mouse IgG(H+L).



Immunohistochemical analysis of paraffin-embedded human liver cancer tissue slide using 67433-1-Ig (CYP20A1 antibody) at dilution of 1:500 (under 10x lens). Heat mediated antigen retrieval with Tris-EDTA buffer (pH 9.0).



Immunohistochemical analysis of paraffin-embedded human liver cancer tissue slide using 67433-1-Ig (CYP20A1 antibody) at dilution of 1:500 (under 40x lens). Heat mediated antigen retrieval with Tris-EDTA buffer (pH 9.0).



Various lysates were subjected to SDS PAGE followed by western blot with 67433-1-Ig (CYP20A1 antibody) at dilution of 1:20000 incubated at room temperature for 1.5 hours.