

À des fins de recherche uniquement

Anticorps Monoclonal anti-PROX1

Numéro de catalogue: 67438-1-Ig



Informations de base

Numéro de catalogue: 67438-1-Ig	Numéro d'acquisition GenBank: BC024201	Méthode de purification: Purification par protéine A
Taille: 150ul, Concentration: 2000 µg/ml by Nanodrop and 1000 µg/ml by Bradford method using BSA as the standard;	Identification du gène (NCBI): 5629	CloneNo.: 1D4B1
Hôte: Mouse	Nom complet: prospero homeobox 1	Dilutions recommandées: WB 1:1000-1:6000 IHC 1:2000-1:8000
Isotype: IgG2b	MW calculé: 737 aa, 83 kDa	
Immunogen Catalog Number: AG9681	MW observés: 90 kDa	

Applications

Applications testées: IHC, WB, ELISA	Contrôles positifs: WB : tissu hépatique de rat, cellules HuH-7 IHC : tissu de cancer du poumon humain,
Spécificité de l'espèce: Humain, rat, souris	
Remarque-IHC: il est suggéré de démasquer l'antigène avec un tampon de TE buffer pH 9.0; (*) À défaut, 'le démasquage de l'antigène peut être 'effectué avec un tampon citrate pH 6,0.	

Informations générales

PROX1, Prospero homeobox protein 1, belongs to the Prospero homeobox family and contain a Prospero-type homeobox DNA-binding domain. PROX1 plays a fundamental role in early development of CNS and regulates the expression of gene and development of postmitotic, undifferentiated neurons. Also, PROX1 is a required regulator of the development of the lymphatic system. This antibody is raised against part of C-terminal chain of human PROX1. The calculated molecular weight of PROX1 is 83 kDa, but with post-translational modifications, PROX1 is about 90 kDa.

Stockage

Stockage:
Stocker à -20 °C.
Tampon de stockage:
PBS avec azoture de sodium à 0,02 % et glycérol à 50 % pH 7,3
L'aliquotage n'est pas nécessaire pour le stockage à -20C

*** Les 20ul contiennent 0,1% de BSA.

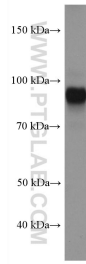
For technical support and original validation data for this product please contact:

T: 1 (888) 4PTGLAB (1-888-478-4522) (toll free
in USA), or 1(312) 455-8498 (outside USA)

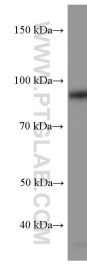
E: proteintech@ptglab.com
W: ptglab.com

This product is exclusively available under Proteintech Group brand and is not available to purchase from any other manufacturer.

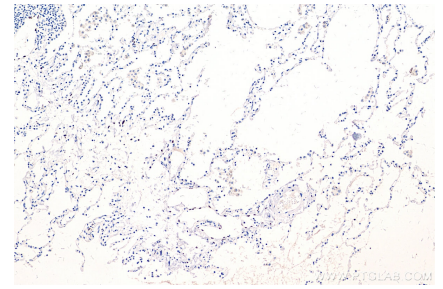
Données de validation sélectionnées



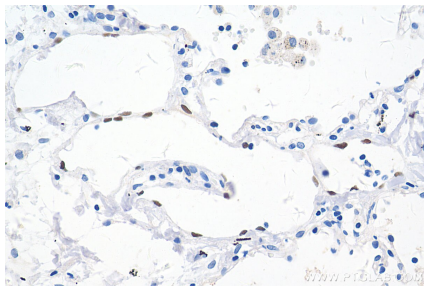
HuH-7 cells were subjected to SDS PAGE followed by western blot with 67438-1-Ig (PROX1 antibody) at dilution of 1:3000 incubated at room temperature for 1.5 hours.



rat liver tissue were subjected to SDS PAGE followed by western blot with 67438-1-Ig (PROX1 antibody) at dilution of 1:3000 incubated at room temperature for 1.5 hours.



Immunohistochemical analysis of paraffin-embedded human lung cancer tissue slide using 67438-1-Ig (PROX1 antibody) at dilution of 1:4000 (under 10x lens). Heat mediated antigen retrieval with Tris-EDTA buffer (pH 9.0).



Immunohistochemical analysis of paraffin-embedded human lung cancer tissue slide using 67438-1-Ig (PROX1 antibody) at dilution of 1:4000 (under 40x lens). Heat mediated antigen retrieval with Tris-EDTA buffer (pH 9.0).