

À des fins de recherche uniquement

Anticorps Monoclonal anti-PPM1D

Numéro de catalogue: 67440-1-Ig



Informations de base

Numéro de catalogue: 67440-1-Ig	Numéro d'acquisition GenBank: BC060877	Méthode de purification: Purification par protéine G
Taille: 150ul, Concentration: 2000 µg/ml by Nanodrop and 1000 µg/ml by Bradford method using BSA as the standard;	Identification du gène (NCBI): 8493	CloneNo.: 2D6D5
Hôte: Mouse	Nom complet: protein phosphatase 1D magnesium- dependent, delta isoform	Dilutions recommandées: WB 1:2000-1:10000 IHC 1:50-1:500 IF 1:50-1:500
Isotype: IgG1	MW observés: 67 kDa, 47 kDa	
Immunogen Catalog Number: AG24761		

Applications

Applications testées:

IF, IHC, WB, ELISA

Spécificité de l'espèce:

Humain, porc, rat, souris

Remarque-IHC: il est suggéré de démasquer l'antigène avec un tampon de TE buffer pH 9.0; (*) À défaut, le démasquage de l'antigène peut être effectué avec un tampon citrate pH 6.0.

Contrôles positifs:

WB : cellules MCF-7, cellules HEK-293, cellules U2OS, tissu cérébral de porc, tissu cérébral de rat, tissu cérébral de souris

IHC : tissu de cancer du côlon humain,

IF : cellules HepG2,

Informations générales

PPM1D (also known as PP2Cd and WIP1) is a member of the PPM family, which is characterized by Mg²⁺/Mn²⁺-dependent activity and relative insensitivity to okadaic acid. The PPM1D gene is aberrantly amplified in a range of common cancers and encodes a protein phosphatase that is a potential therapeutic target (PMID: 17700519). This antibody can be detected two bands of 47 and 67 Kda.

Stockage

Stockage:

Stocker à -20°C. Stable pendant un an après l'expédition.

Tampon de stockage:

PBS avec azoture de sodium à 0,02 % et glycérol à 50 % pH 7,3

L'aliquotage n'est pas nécessaire pour le stockage à -20C

*** Les 20ul contiennent 0,1% de BSA.

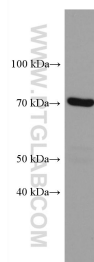
For technical support and original validation data for this product please contact:

T: 1 (888) 4PTGLAB (1-888-478-4522) (toll free
in USA), or 1(312) 455-8498 (outside USA)

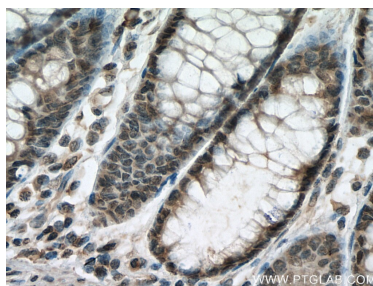
E: proteintech@ptglab.com
W: ptglab.com

This product is exclusively available under Proteintech Group brand and is not available to purchase from any other manufacturer.

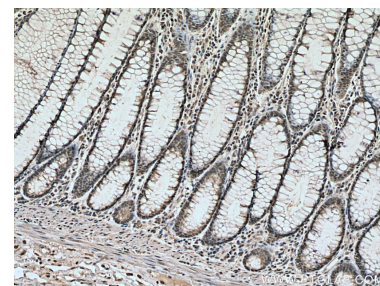
Données de validation sélectionnées



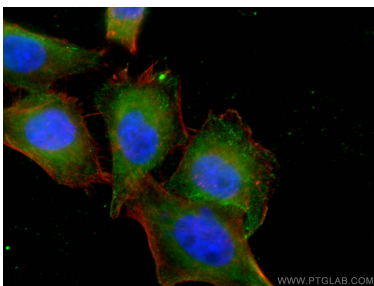
MCF-7 cells were subjected to SDS PAGE followed by western blot with 67440-1-Ig (PPM1D antibody) at dilution of 1:5000 incubated at room temperature for 1.5 hours.



Immunohistochemical analysis of paraffin-embedded human colon cancer tissue slide using 67440-1-Ig (PPM1D antibody) at dilution of 1:200 (under 40x lens). Heat mediated antigen retrieval with Tris-EDTA buffer (pH 9.0).



Immunohistochemical analysis of paraffin-embedded human colon cancer tissue slide using 67440-1-Ig (PPM1D antibody) at dilution of 1:200 (under 10x lens). Heat mediated antigen retrieval with Tris-EDTA buffer (pH 9.0).



Immunofluorescent analysis of (4% PFA) fixed HepG2 cells using 67440-1-Ig (PPM1D antibody), at dilution of 1:200 and Coralite®488-Conjugated AffiniPure Goat Anti-Mouse IgG(H+L).