

À des fins de recherche uniquement

Anticorps Monoclonal anti-MTH1

Numéro de catalogue: 67443-1-Ig



Informations de base

| | | |
|--|--|---|
| Numéro de catalogue: 67443-1-Ig | Numéro d'acquisition GenBank: BC014618 | Méthode de purification: Purification par protéine A |
| Taille: 150ul, Concentration: 2000 µg/ml by Nanodrop and 1000 µg/ml by Bradford method using BSA as the standard; | Identification du gène (NCBI): 4521 | CloneNo.: 2D7G4 |
| Hôte: Mouse | Nom complet: nudix (nucleoside diphosphate linked moiety X)-type motif 1 | Dilutions recommandées: WB 1:2000-1:10000 |
| Isotype: IgG1 | MW calculé 179aa, 20 kDa; 197aa, 23 kDa | |
| Immunogen Catalog Number: AG9802 | MW observés: 19 kDa | |

Applications

Applications testées:
WB, ELISA
Spécificité de l'espèce:
Humain

Contrôles positifs:

WB : cellules HeLa, cellules HEK-293, cellules HepG2,
cellules Jurkat, cellules K-562

Informations générales

MTH1, also known as NUDT1 or 8-Oxo-dGTPase, is an important repair enzyme that prevents oxidative stress-induced DNA damage through hydrolyzing mutagenic 8-oxo-dGTP into 8-oxo-dGMP. MTH1 is expressed in postmitotic neurons as well as in proliferative tissues, and it is localized both in the mitochondria and nucleus. MTH1 might be a useful marker of oxidative stress and its level increased upon oxidative stress. Increased expression of MTH1 were also found in various cancer tissues and neurodegenerative diseases.

Stockage

Stockage:
Stocker à -20°C. Stable pendant un an après l'expédition.
Tampon de stockage:
PBS avec azoture de sodium à 0,02 % et glycérol à 50 % pH 7,3
L'aliquotage n'est pas nécessaire pour le stockage à -20C

*** Les 20ul contiennent 0,1% de BSA.

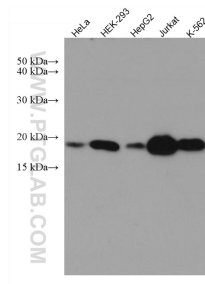
For technical support and original validation data for this product please contact:

T: 1 (888) 4PTGLAB (1-888-478-4522) (toll free
in USA), or 1(312) 455-8498 (outside USA)

E: proteintech@ptglab.com
W: ptglab.com

This product is exclusively available under Proteintech Group brand and is not available to purchase from any other manufacturer.

Données de validation sélectionnées



Various lysates were subjected to SDS PAGE followed by western blot with 67443-1-Ig (MTH1 antibody) at dilution of 1:5000 incubated at room temperature for 1.5 hours.