

À des fins de recherche uniquement

Anticorps Monoclonal anti-BDH1

Numéro de catalogue: 67448-1-Ig **1 Publications**



Informations de base

Numéro de catalogue: 67448-1-Ig	Numéro d'acquisition GenBank: BC005844	Méthode de purification: Purification par protéine G
Taille: 150ul , Concentration: 2100 µg/ml by Nanodrop and 1000 µg/ml by Bradford method using BSA as the standard;	Identification du gène (NCBI): 622	CloneNo.: 2C3D4
Hôte: Mouse	Nom complet: 3-hydroxybutyrate dehydrogenase, type 1	Dilutions recommandées: WB 1:2000-1:10000 IHC 1:500-1:2000 IF 1:200-1:800
Isotype: IgG1	MW calculé 38 kDa	
Immunogen Catalog Number: AG7864	MW observés: 31 kDa	

Applications

Applications testées:

IF, IHC, WB, ELISA

Demandes citées:

WB

Spécificité de l'espèce:

Humain, porc, rat, souris

Espèces citées:

souris

Remarque-IHC: il est suggéré de démasquer l'antigène avec un tampon de TE buffer pH 9,0; (*) A défaut, 'le démasquage de l'antigène peut être 'effectué avec un tampon citrate pH 6,0.

Contrôles positifs:

WB : tissu hépatique de porc, cellules COLO 320, cellules HepG2, cellules HSC-T6, cellules HT-29

IHC : tissu de cancer du foie humain,

IF : tissu hépatique de souris,

Informations générales

BDH1 (3-hydroxybutyrate dehydrogenase, type 1) is a 343 amino acid protein that localizes to the mitochondrial matrix and belongs to the short-chain dehydrogenases/reductases (SDR) family. The deduced 343 amino acid protein contains a 46 residue leader peptide, which is cleaved to produce the mature form. It is a lipid-requiring mitochondrial enzyme with a specific requirement of phosphatidylcholine (PC).

Publications notables

Autrice	Pubmed ID	Journal	Application
Yi NA Dong	36016708	PNAS Nexus	WB

Stockage

Stockage:

Stocker à -20 °C

Tampon de stockage:

PBS avec azoture de sodium à 0,02 % et glycérol à 50 % pH 7,3

L'aliquotage n'est pas nécessaire pour le stockage à -20C

*** Les 20ul contiennent 0,1% de BSA.

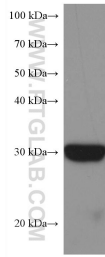
For technical support and original validation data for this product please contact:

T: 1 (888) 4PTGLAB (1-888-478-4522) (toll free in USA), or 1(312) 455-8498 (outside USA)

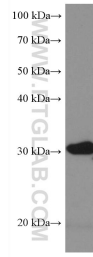
E: proteintech@ptglab.com
W: ptglab.com

This product is exclusively available under Proteintech Group brand and is not available to purchase from any other manufacturer.

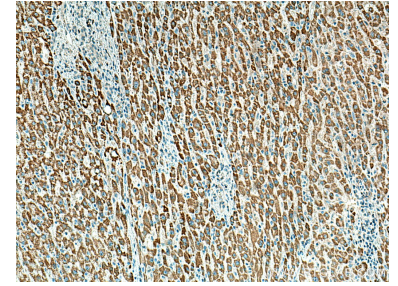
Données de validation sélectionnées



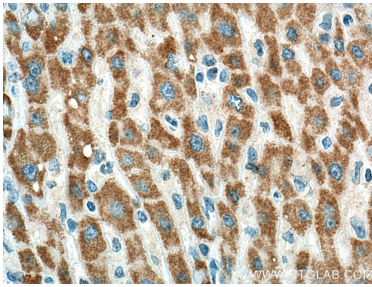
pig liver tissue were subjected to SDS PAGE followed by western blot with 67448-1-Ig (BDH1 antibody) at dilution of 1:5000 incubated at room temperature for 1.5 hours.



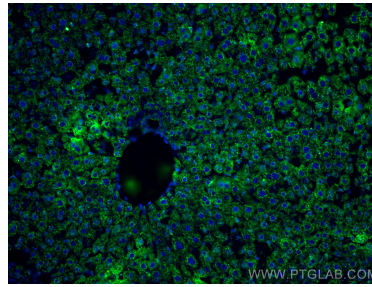
HSC-T6 cells were subjected to SDS PAGE followed by western blot with 67448-1-Ig (BDH1 antibody) at dilution of 1:5000 incubated at room temperature for 1.5 hours.



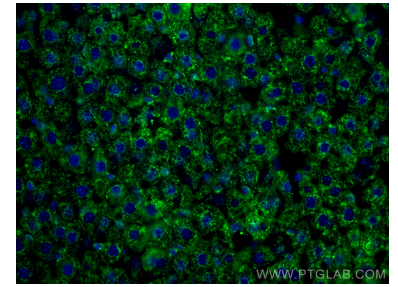
Immunohistochemical analysis of paraffin-embedded human liver cancer tissue slide using 67448-1-Ig (BDH1 antibody) at dilution of 1:1000 (under 10x lens). Heat mediated antigen retrieval with Tris-EDTA buffer (pH 9.0).



Immunohistochemical analysis of paraffin-embedded human liver cancer tissue slide using 67448-1-Ig (BDH1 antibody) at dilution of 1:1000 (under 40x lens). Heat mediated antigen retrieval with Tris-EDTA buffer (pH 9.0).



Immunofluorescent analysis of (4% PFA) fixed mouse liver tissue using BDH1 antibody (67448-1-Ig, Clone: 2C3D4) at dilution of 1:400 and CoraLite@488-Conjugated AffiniPure Goat Anti-Mouse IgG(H+L).



Immunofluorescent analysis of (4% PFA) fixed mouse liver tissue using BDH1 antibody (67448-1-Ig, Clone: 2C3D4) at dilution of 1:400 and CoraLite@488-Conjugated AffiniPure Goat Anti-Mouse IgG(H+L).