

À des fins de recherche uniquement

Anticorps Monoclonal anti-OMA1

Numéro de catalogue: 67449-1-Ig



Informations de base

Numéro de catalogue: 67449-1-Ig	Numéro d'acquisition GenBank: BC012915	Méthode de purification: Purification par protéine G
Taille: 150ul , Concentration: 1900 µg/ml by Nanodrop and 1000 µg/ml by Bradford method using BSA as the standard;	Identification du gène (NCBI): 115209	CloneNo.: 1H4D12
Hôte: Mouse	Nom complet: OMA 1 homolog, zinc metallopeptidase (S. cerevisiae)	Dilutions recommandées: WB 1:1000-1:5000
Isotype: IgG1	MW calculé 524 aa, 60 kDa	
Immunogen Catalog Number: AG11201	MW observés: 60 kDa	

Applications

Applications testées: WB,ELISA	Contrôles positifs: WB : cellules NIH/3T3, cellules HEK-293, cellules HeLa, cellules Jurkat, cellules LNCaP
Spécificité de l'espèce: Humain, souris	

Informations générales

OMA1(Overlapping with the m-AAA protease 1 homolog) is also named as MPRP1(Metalloprotease-related protein 1) and belongs to the peptidase M48 family.It is a zinc metalloprotease that spans the inner mitochondrial membrane with a number of predicted membrane spanning domains and the 60 kDa form of OMA1 rapidly accumulated concomitantly with the cleavage of all OPA1 variants,and the 40 kDa form of OMA1 may be the inactive form, with the 60 kDa form being the active enzyme(PMID:20334834)

Stockage

Stockage:
Stocker à -20 °C
Tampon de stockage:
PBS avec azoture de sodium à 0,02 % et glycérol à 50 % pH 7,3
L'aliquotage n'est pas nécessaire pour le stockage à -20C

*** Les 20ul contiennent 0,1% de BSA.

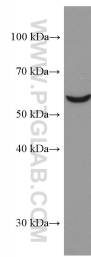
For technical support and original validation data for this product please contact:

T: 1 (888) 4PTGLAB (1-888-478-4522) (toll free
in USA), or 1(312) 455-8498 (outside USA)

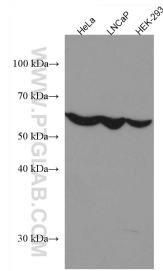
E: proteintech@ptglab.com
W: ptglab.com

This product is exclusively available under Proteintech Group brand and is not available to purchase from any other manufacturer.

Données de validation sélectionnées



NIH/3T3 cells were subjected to SDS PAGE followed by western blot with 67449-1-Ig (OMA1 antibody) at dilution of 1:3000 incubated at room temperature for 1.5 hours.



Various lysates were subjected to SDS PAGE followed by western blot with 67449-1-Ig (OMA1 antibody) at dilution of 1:3000 incubated at room temperature for 1.5 hours.