

À des fins de recherche uniquement

Anticorps Monoclonal anti-ME2

Numéro de catalogue: 67457-1-Ig Phare



Informations de base

Numéro de catalogue: 67457-1-Ig	Numéro d'acquisition GenBank: BC000147	Méthode de purification: Purification par protéine A
Taille: 150ul , Concentration: 900 µg/ml by Nanodrop and 500 µg/ml by Bradford method using BSA as the standard;	Identification du gène (NCBI): 4200	CloneNo.: 6E6E2
Hôte: Mouse	Nom complet: malic enzyme 2, NAD(+)-dependent, mitochondrial	Dilutions recommandées: WB 1:1000-1:5000 IHC 1:50-1:500
Isotype: IgG2a	MW calculé 65 kDa	
Immunogen Catalog Number: AG20741	MW observés: 54 kDa, 65 kDa	

Applications

Applications testées:

IHC, WB, ELISA

Spécificité de l'espèce:

Humain, rat, souris

Remarque-IHC: il est suggéré de démasquer l'antigène avec un tampon de TE buffer pH 9.0; (*) À défaut, le démasquage de l'antigène peut être effectué avec un tampon citrate pH 6,0.

Contrôles positifs:

WB : cellules LNCaP, cellules HeLa, cellules HepG2, cellules HSC-T6, cellules K-562, cellules NIH/3T3, plaquettes de sang périphérique humain

IHC : tissu de cancer du foie humain,

Informations générales

ME2(malic enzyme 2) is also named as NAD-ME and belongs to the malic enzymes family. ME1, ME2 are important for NADPH production, lipogenesis and glutamine metabolism, but ME2 has a more profound effect. ME2 is a genome-coded mitochondrial enzyme that converts malate to pyruvate and is involved in neuronal synthesis of the neurotransmitter γ -aminobutyric acid (GABA)(PMID:15532013). This protein has 2 isoforms produced by alternative splicing with the MW of 65 kDa and 54 kDa.

Stockage

Stockage:

Stocker à -20 °C.

Tampon de stockage:

PBS avec azoture de sodium à 0,02 % et glycérol à 50 % pH 7,3

L'aliquotage n'est pas nécessaire pour le stockage à -20C

*** Les 20ul contiennent 0,1% de BSA.

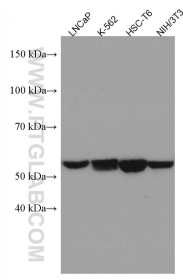
For technical support and original validation data for this product please contact:

T: 1 (888) 4PTGLAB (1-888-478-4522) (toll free in USA), or 1(312) 455-8498 (outside USA)

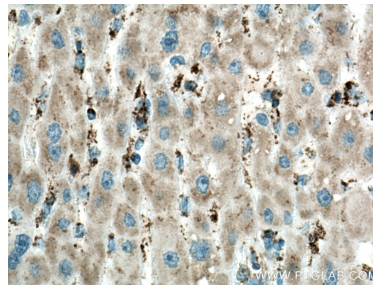
E: proteintech@ptglab.com
W: ptglab.com

This product is exclusively available under Proteintech Group brand and is not available to purchase from any other manufacturer.

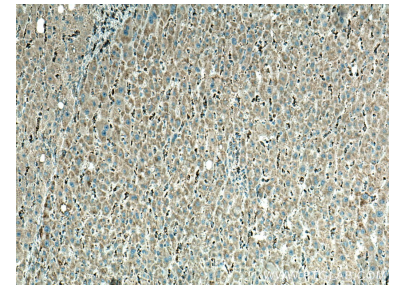
Données de validation sélectionnées



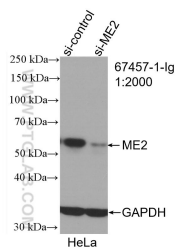
Various lysates were subjected to SDS PAGE followed by western blot with 67457-1-Ig (ME2 antibody) at dilution of 1:2500 incubated at room temperature for 1.5 hours.



Immunohistochemical analysis of paraffin-embedded human liver cancer tissue slide using 67457-1-Ig (ME2 antibody) at dilution of 1:200 (under 40x lens). Heat mediated antigen retrieval with Tris-EDTA buffer (pH 9.0).



Immunohistochemical analysis of paraffin-embedded human liver cancer tissue slide using 67457-1-Ig (ME2 antibody) at dilution of 1:200 (under 10x lens). Heat mediated antigen retrieval with Tris-EDTA buffer (pH 9.0).



WB result of ME2 antibody (67457-1-Ig; 1:2000; incubated at room temperature for 1.5 hours) with sh-Control and sh-ME2 transfected HeLa cells.