

À des fins de recherche uniquement

# Anticorps Monoclonal anti-CEP55

Numéro de catalogue: 67460-1-Ig **Phare**



## Informations de base

<b>Numéro de catalogue:</b> 67460-1-Ig	<b>Numéro d'acquisition GenBank:</b> BC008947	<b>Méthode de purification:</b> Purification par protéine G
<b>Taille:</b> 150ul , Concentration: 2100 µg/ml by Nanodrop and 1000 µg/ml by Bradford method using BSA as the standard;	<b>Identification du gène (NCBI):</b> 55165	<b>CloneNo.:</b> 2D11F7
<b>Hôte:</b> Mouse	<b>Nom complet:</b> centrosomal protein 55kDa	<b>Dilutions recommandées:</b> WB 1:5000-1:50000 IF 1:50-1:500
<b>Isotype:</b> IgG1	<b>MW calculé:</b> 54 kDa	
<b>Immunogen Catalog Number:</b> AG29995	<b>MW observés:</b> 47-55 kDa	

## Applications

<b>Applications testées:</b> IF, WB, ELISA	<b>Contrôles positifs:</b>
<b>Spécificité de l'espèce:</b> Humain	<b>WB :</b> cellules A549, cellules HEK-293, cellules HeLa, cellules HepG2, cellules Jurkat, tissu testiculaire de souris
	<b>IF :</b> cellules HeLa, cellules HepG2

## Informations générales

CEP55, also named as C10orf3 and URCC6, is a 55 kDa protein which located in the centrosome in interphase cells and recruited to the midbody during cytokinesis, is essential for completion of cell abscission. It plays a role in mitotic exit and cytokinesis. CEP55 has two isoforms with the MW of 47 and 55 kDa.

## Stockage

**Stockage:**  
Stocker à -20°C. Stable pendant un an après l'expédition.  
**Tampon de stockage:**  
PBS avec azoture de sodium à 0,02 % et glycérol à 50 % pH 7,3  
L'aliquotage n'est pas nécessaire pour le stockage à -20C

**\*\*\* Les 20ul contiennent 0,1% de BSA.**

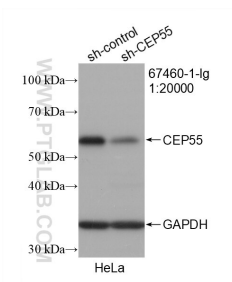
For technical support and original validation data for this product please contact:

T: 1 (888) 4PTGLAB (1-888-478-4522) (toll free in USA), or 1(312) 455-8498 (outside USA)

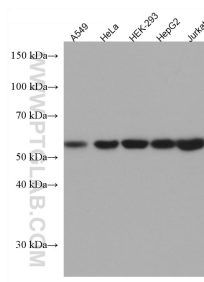
E: [proteintech@ptglab.com](mailto:proteintech@ptglab.com)  
W: [ptglab.com](http://ptglab.com)

**This product is exclusively available under Proteintech Group brand and is not available to purchase from any other manufacturer.**

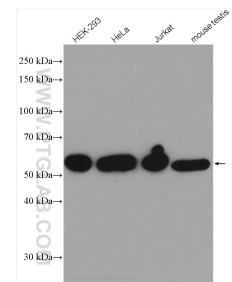
## Données de validation sélectionnées



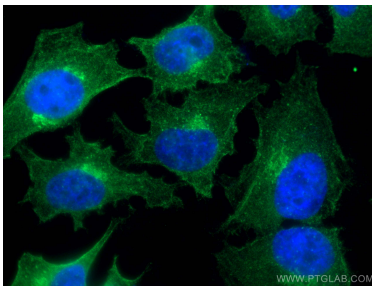
WB result of CEP55 antibody (67460-1-Ig; 1:20000); incubated at room temperature for 1.5 hours) with sh-Control and sh-CEP55 transfected HeLa cells.



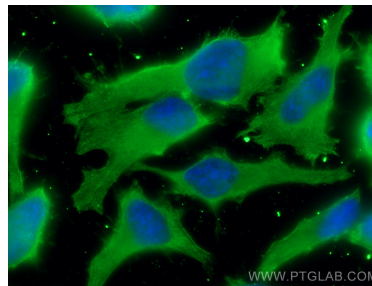
Various lysates were subjected to SDS PAGE followed by western blot with 67460-1-Ig (CEP55 antibody) at dilution of 1:15000 incubated at room temperature for 1.5 hours.



Various lysates were subjected to SDS PAGE followed by western blot with 67460-1-Ig (CEP55 antibody) at dilution of 1:15000 incubated at room temperature for 1.5 hours.



Immunofluorescent analysis of (4% PFA) fixed HeLa cells using 67460-1-Ig (CEP55 antibody), at dilution of 1:200 and CoralLite@488-Conjugated AffiniPure Goat Anti-Mouse IgG(H+L).



Immunofluorescent analysis of (-20°C Ethanol) fixed HeLa cells using CEP55 antibody (67460-1-Ig, Clone: 2D11F7) at dilution of 1:800 and CoralLite@488-Conjugated AffiniPure Goat Anti-Mouse IgG(H+L).