

À des fins de recherche uniquement

Anticorps Monoclonal anti-Arfaptin-1

Numéro de catalogue: 67461-1-Ig



Informations de base

Numéro de catalogue: 67461-1-Ig	Numéro d'acquisition GenBank: BC103759	Méthode de purification: Purification par protéine A
Taille: 150ul, Concentration: 1500 µg/ml by Nanodrop and 1000 µg/ml by Bradford method using BSA as the standard;	Identification du gène (NCBI): 27236	CloneNo.: 2A10B3
Hôte: Mouse	Nom complet: ADP-ribosylation factor interacting protein 1	Dilutions recommandées: WB 1:1000-1:4000 IHC 1:200-1:800 IF 1:200-1:800
Isotype: IgG2a	MW calculé 373 aa, 42 kDa	
Immunogen Catalog Number: AG12097	MW observés: 38-42 kDa	

Applications

Applications testées:
FC, IF, IHC, WB, ELISA

Spécificité de l'espèce:
Humain, rat, souris

Remarque-IHC: il est suggéré de démasquer l'antigène avec un tampon de TE buffer pH 9.0; (*) À défaut, le démasquage de l'antigène peut être effectué avec un tampon citrate pH 6,0.

Contrôles positifs:

WB : cellules HeLa, cellules 4T1, cellules HepG2, cellules HSC-T6, cellules Jurkat, cellules NIH/3T3, cellules RAW 264.7

IHC : tissu rénal de souris,

IF : tissu rénal de souris, cellules A549, cellules HeLa

Informations générales

Stockage

Stockage:
Stocker à -20°C. Stable pendant un an après l'expédition.
Tampon de stockage:
PBS avec azoture de sodium à 0,02 % et glycérol à 50 % pH 7,3
L'aliquotage n'est pas nécessaire pour le stockage à -20C

*** Les 20ul contiennent 0,1% de BSA.

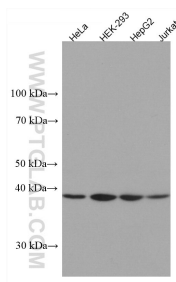
For technical support and original validation data for this product please contact:

T: 1 (888) 4PTGLAB (1-888-478-4522) (toll free in USA), or 1(312) 455-8498 (outside USA)

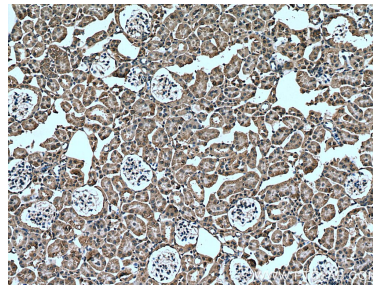
E: proteintech@ptglab.com
W: ptglab.com

This product is exclusively available under Proteintech Group brand and is not available to purchase from any other manufacturer.

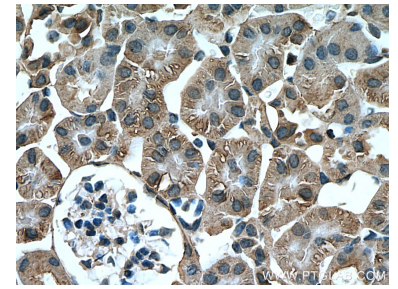
Données de validation sélectionnées



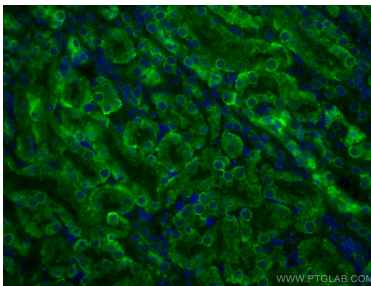
Various lysates were subjected to SDS PAGE followed by western blot with 67461-1-Ig (ARFIP1 antibody) at dilution of 1:3000 incubated at room temperature for 1.5 hours.



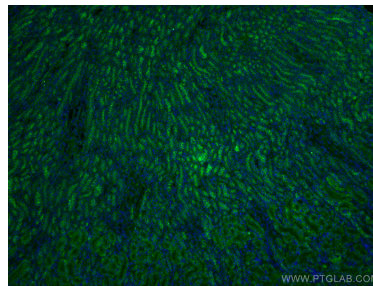
Immunohistochemical analysis of paraffin-embedded mouse kidney tissue slide using 67461-1-Ig (Arfaptin-1 antibody) at dilution of 1:400 (under 10x lens). Heat mediated antigen retrieval with Tris-EDTA buffer (pH 9.0).



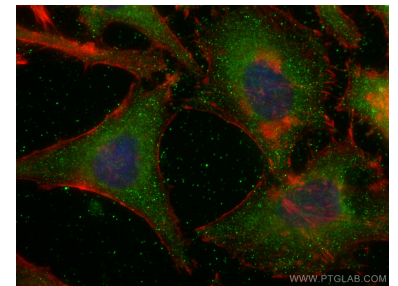
Immunohistochemical analysis of paraffin-embedded mouse kidney tissue slide using 67461-1-Ig (Arfaptin-1 antibody) at dilution of 1:400 (under 40x lens). Heat mediated antigen retrieval with Tris-EDTA buffer (pH 9.0).



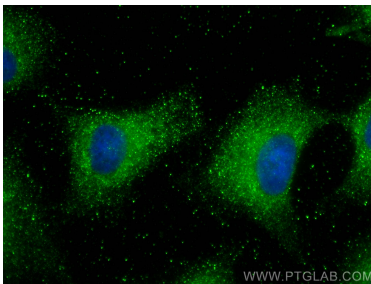
Immunofluorescent analysis of (4% PFA) fixed mouse kidney tissue using Arfaptin-1 antibody (67461-1-Ig, Clone: 2A10B3) at dilution of 1:400 and CoraLite@488-Conjugated AffiniPure Goat Anti-Mouse IgG(H+L).



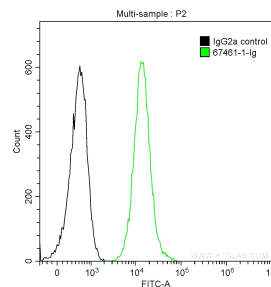
Immunofluorescent analysis of (4% PFA) fixed mouse kidney tissue using Arfaptin-1 antibody (67461-1-Ig, Clone: 2A10B3) at dilution of 1:400 and CoraLite@488-Conjugated AffiniPure Goat Anti-Mouse IgG(H+L).



Immunofluorescent analysis of (-20°C Ethanol) fixed HeLa cells using Arfaptin-1 antibody (67461-1-Ig, Clone: 2A10B3) at dilution of 1:800 and CoraLite@488-Conjugated AffiniPure Goat Anti-Mouse IgG(H+L), CL594-Phalloidin (red).



Immunofluorescent analysis of (-20°C Methanol) fixed A549 cells using Arfaptin-1 antibody (67461-1-Ig, Clone: 2A10B3) at dilution of 1:800 and CoraLite@488-Conjugated AffiniPure Goat Anti-Mouse IgG(H+L).



1X10⁶ Jurkat cells were intracellularly stained with 0.2 ug Anti-Human Arfaptin-1 (67461-1-Ig, Clone:2A10B3) and CoraLite@488-Conjugated AffiniPure Goat Anti-Mouse IgG(H+L) at dilution 1:1000 (green), and 0.2 ug Mouse IgG2a Isotype Control (66360-2-Ig, Clone: K11A1B2A2) (black). Cells were fixed with 90% MeOH.