

À des fins de recherche uniquement

# Anticorps Monoclonal anti-PTBP1

Numéro de catalogue: 67462-1-Ig

Phare

1 Publications



## Informations de base

Numéro de catalogue: 67462-1-Ig	Numéro d'acquisition GenBank: BC013694	Méthode de purification: Purification par protéine A
Taille: 150ul , Concentration: 2000 µg/ml by Nanodrop and 921 µg/ml by Bradford method using BSA as the standard;	Identification du gène (NCBI): 5725	CloneNo.: 3D6D8
Hôte: Mouse	Nom complet: polypyrimidine tract binding protein 1	Dilutions recommandées: WB 1:5000-1:50000 IHC 1:500-1:2000 IF 1:50-1:500
Isotype: IgG1	MW calculé 59 aa, 6 kDa	
Immunogen Catalog Number: AG28404	MW observés: 60 kDa	

## Applications

### Applications testées:

IF, IHC, WB, ELISA

### Demandes citées:

WB

### Spécificité de l'espèce:

Humain, rat, souris

### Espèces citées:

souris

**Remarque-IHC: il est suggéré de démasquer l'antigène avec un tampon de TE buffer pH 9,0; (\*) A défaut, 'le démasquage de l'antigène peut être 'effectué avec un tampon citrate pH 6,0.**

### Contrôles positifs:

WB : cellules A549, cellules 4T1, cellules HeLa, cellules HSC-T6, cellules LNCaP, cellules NIH/3T3, cellules PC-12

IHC : tissu de cancer du côlon humain, tissu de cancer du pancréas humain

IF : cellules A375, tissu cérébral de souris

## Informations générales

Polypyrimidine tract-binding protein (PTBP1), also known as heterogeneous nuclear ribonucleoprotein type I (hnRNP I), is a nuclear protein that binds pre-mRNAs in specific regions of the hnRNA-protein complexes sensitive to micrococcal nuclease. It involves in pre-mRNA splicing and the regulation of alternative splicing events. PTBP1 promotes RNA looping when bound to two separate polypyrimidine tracts in the same pre-mRNA, and promotes the binding of U2 snRNP to pre-mRNA. Besides, it can cooperate with RAVER1 to modulate switching between mutually exclusive exons during maturation of the TPM1 pre-mRNA, and represses the splicing of MAPT/Tau exon 10.

## Publications notables

Autrice	Pubmed ID	Journal	Application
Jia Luo	37258239	J Toxicol Sci	WB

## Stockage

### Stockage:

Stocker à -20°C. Stable pendant un an après l'expédition.

### Tampon de stockage:

PBS avec azoture de sodium à 0,02 % et glycérol à 50 % pH 7,3

L'aliquotage n'est pas nécessaire pour le stockage à -20C

\*\*\* Les 20ul contiennent 0,1% de BSA.

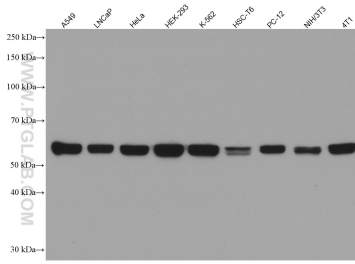
For technical support and original validation data for this product please contact:

T: 1 (888) 4PTGLAB (1-888-478-4522) (toll free in USA), or 1(312) 455-8498 (outside USA)

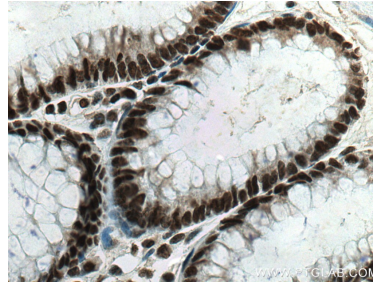
E: proteintech@ptglab.com  
W: ptglab.com

This product is exclusively available under Proteintech Group brand and is not available to purchase from any other manufacturer.

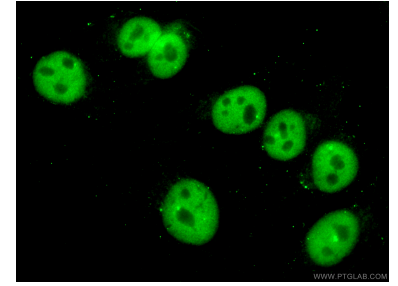
## Données de validation sélectionnées



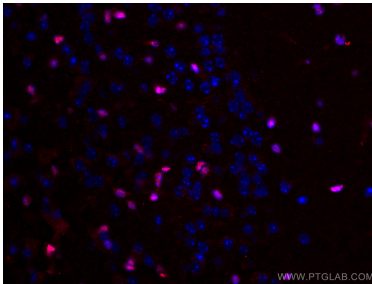
Various lysates were subjected to SDS PAGE followed by western blot with 67462-1-Ig (PTBP1 antibody) at dilution of 1:10000 incubated at room temperature for 1.5 hours.



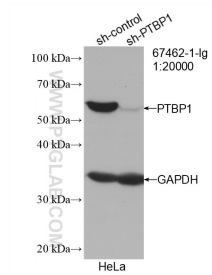
Immunohistochemical analysis of paraffin-embedded human colon cancer tissue slide using 67462-1-Ig (PTBP1 antibody) at dilution of 1:1000 (under 40x lens). Heat mediated antigen retrieval with Tris-EDTA buffer (pH 9.0).



Immunofluorescent analysis of (4% PFA) fixed A375 cells using 67462-1-Ig (PTBP1 antibody), at dilution of 1:200 and CoraLite@488-Conjugated AffiniPure Goat Anti-Mouse IgG(H+L).



Immunofluorescent analysis of (4% PFA) fixed mouse brain tissue using 67462-1-Ig (PTBP1 antibody), at dilution of 1:100 and CoraLite@488-Conjugated AffiniPure Goat Anti-Mouse IgG(H+L).



WB result of PTBP1 antibody (67462-1-Ig; 1:20000; incubated at room temperature for 1.5 hours) with sh-Control and sh-PTBP1 transfected HeLa cells.