

À des fins de recherche uniquement

Anticorps Monoclonal anti-C20orf3/APMAP



Numéro de catalogue: 67464-1-Ig **Phare**

Informations de base

| | | |
|---|---|--|
| Numéro de catalogue: 67464-1-Ig | Numéro d'acquisition GenBank: BC003501 | Méthode de purification: Purification par protéine G |
| Taille: 150ul, Concentration: 1600 µg/ml by Nanodrop and 1000 µg/ml by Bradford method using BSA as the standard; | Identification du gène (NCBI): 57136 | CloneNo.: 1C6C2 |
| Hôte: Mouse | Nom complet: chromosome 20 open reading frame 3 | Dilutions recommandées: WB 1:5000-1:50000 |
| Isotype: IgG1 | MW calculé 416 aa, 46 kDa | |
| Immunogen Catalog Number: AG29996 | MW observés: 42-46 kDa | |

Applications

Applications testées:
WB, ELISA

Spécificité de l'espèce:
Humain, Lapin, rat, souris

Contrôles positifs:

WB : cellules Jurkat, cellules HepG2, cellules HSC-T6, cellules LNCaP, cellules NIH/3T3, tissu hépatique de lapin, tissu hépatique de rat, tissu hépatique de souris, tissu placentaire humain

Informations générales

Stockage

Stockage:
Stocker à -20°C. Stable pendant un an après l'expédition.

Tampon de stockage:
PBS avec azoture de sodium à 0,02 % et glycérol à 50 % pH 7,3
L'aliquotage n'est pas nécessaire pour le stockage à -20C

***** Les 20ul contiennent 0,1% de BSA.**

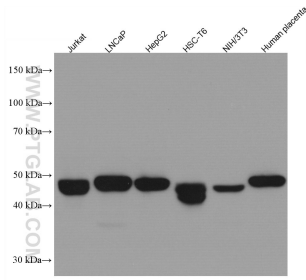
For technical support and original validation data for this product please contact:

T: 1 (888) 4PTGLAB (1-888-478-4522) (toll free in USA), or 1(312) 455-8498 (outside USA)

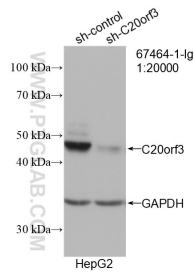
E: proteintech@ptglab.com
W: ptglab.com

This product is exclusively available under Proteintech Group brand and is not available to purchase from any other manufacturer.

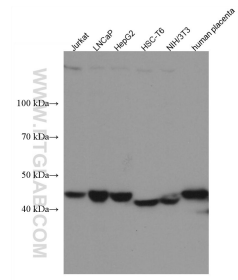
Données de validation sélectionnées



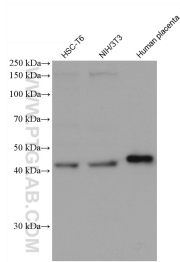
Various lysates were subjected to SDS PAGE followed by western blot with 67464-1-Ig (C20orf3/APMAP antibody) at dilution of 1:50000 incubated at room temperature for 1.5 hours.



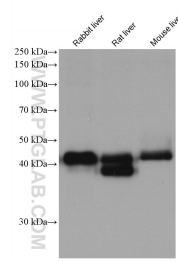
WB result of C20orf3/APMAP antibody (67464-1-Ig; 1:20000; incubated at room temperature for 1.5 hours) with sh-Control and sh-C20orf3/APMAP transfected HepG2 cells.



Various lysates were subjected to SDS PAGE followed by western blot with 67464-1-Ig (C20orf3/APMAP antibody) at dilution of 1:20000 incubated at room temperature for 1.5 hours.



Various lysates were subjected to SDS PAGE followed by western blot with 67464-1-Ig (C20orf3/APMAP antibody) at dilution of 1:50000 incubated at room temperature for 1.5 hours.



Various lysates were subjected to SDS PAGE followed by western blot with 67464-1-Ig (C20orf3/APMAP antibody) at dilution of 1:50000 incubated at room temperature for 1.5 hours.