

À des fins de recherche uniquement

Anticorps Monoclonal anti-PLCL2

Numéro de catalogue: 67471-1-Ig



Informations de base

Numéro de catalogue: 67471-1-Ig	Numéro d'acquisition GenBank: BC036392	Méthode de purification: Purification par protéine G
Taille: 150ul , Concentration: 2500 µg/ml by Nanodrop and 1000 µg/ml by Bradford method using BSA as the standard;	Identification du gène (NCBI): 23228	CloneNo.: 1C8A4
Hôte: Mouse	Nom complet: phospholipase C-like 2	Dilutions recommandées: WB 1:1000-1:6000 IF 1:50-1:500
Isotype: IgG1	MW calculé: 126 kDa	
Immunogen Catalog Number: AG11461	MW observés: 126 kDa	

Applications

Applications testées: IF, WB, ELISA	Contrôles positifs:
Spécificité de l'espèce: Humain, porc, rat, souris	WB : tissu cérébral de porc, tissu cérébral de rat, tissu cérébral de souris IF : cellules HeLa,

Informations générales

PLCL2, a novel phospholipase C-like protein, is expressed in lymphocytes and platelets. The expression of PLCL2 is associated with the proliferation of mature B cells in the immune system. PLCL2 is a new susceptibility loci for myocardial infarction. It has been shown that PLCL2 plays a key role in the pathogenesis of atherosclerosis and systemic sclerosis. There are three isoforms of PLCL2 protein and 67471-1-Ig antibody detects the 126 kDa band in SDS-PAGE. (PMID: 24916648, 25880423)

Stockage

Stockage:
Stocker à -20°C. Stable pendant un an après l'expédition.
Tampon de stockage:
PBS avec azote de sodium à 0,02 % et glycérol à 50 % pH 7,3
L'aliquotage n'est pas nécessaire pour le stockage à -20C

*** Les 20ul contiennent 0,1% de BSA.

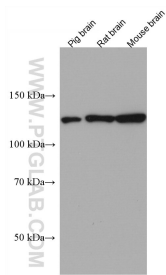
For technical support and original validation data for this product please contact:

T: 1 (888) 4PTGLAB (1-888-478-4522) (toll free in USA), or 1(312) 455-8498 (outside USA)

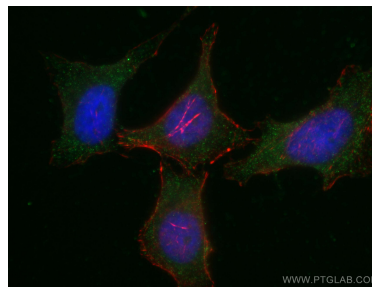
E: proteintech@ptglab.com
W: ptglab.com

This product is exclusively available under Proteintech Group brand and is not available to purchase from any other manufacturer.

Données de validation sélectionnées



Various lysates were subjected to SDS PAGE followed by western blot with 67471-1-Ig (PLCL2 antibody) at dilution of 1:3000 incubated at room temperature for 1.5 hours.



Immunofluorescent analysis of (-20°C Ethanol) fixed HeLa cells using 67471-1-Ig (PLCL2 antibody), at dilution of 1:200 and CoraLite® 488-Conjugated AffiniPure Goat Anti-Mouse IgG(H+L).