

À des fins de recherche uniquement

Anticorps Monoclonal anti-SET

Numéro de catalogue: 67478-1-Ig **1 Publications**



Informations de base

Numéro de catalogue: 67478-1-Ig	Numéro d'acquisition GenBank: NM_003011	Méthode de purification: Purification par protéine A
Taille: 150ul, Concentration: 2200 µg/ml by Nanodrop and 1000 µg/ml by Bradford method using BSA as the standard;	Identification du gène (NCBI): 6418	CloneNo.: 2B4D1
Hôte: Mouse	Nom complet: SET nuclear oncogene	Dilutions recommandées: WB 1:1000-1:6000
Isotype: IgG2b	MW calculé: 33 kDa	
	MW observés: 33-36 kDa	

Applications

Applications testées: WB, ELISA	Contrôles positifs: WB : cellules Jurkat, cellules 4T1, cellules HeLa, cellules HepG2, cellules HSC-T6
Demandes citées: WB	
Spécificité de l'espèce: Humain, rat, souris	
Espèces citées: Humain	

Informations générales

SET, also named as IGAAD, I-2PP2A, TAF-I, IGAAD and PHAPII, belongs to the nucleosome assembly protein (NAP) family. SET is a multifunctional oncoprotein which is ubiquitously expressed in all kinds of cells. The SET protein participates in many cellular processes including cell cycle, cell migration, apoptosis, transcription, and DNA repair. The SET protein plays important roles in facilitating cell proliferation via many pathways that promote tumorigenesis and metastasis.

Publications notables

Autrice	Pubmed ID	Journal	Application
Ling Zhang	37480565	Cell Rep	WB

Stockage

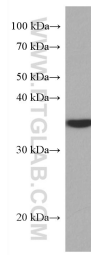
Stockage:
Stocker à -20 °C.
Tampon de stockage:
PBS avec azoture de sodium à 0,02 % et glycérol à 50 % pH 7,3
L'aliquotage n'est pas nécessaire pour le stockage à -20C

***** Les 20ul contiennent 0,1% de BSA.**

For technical support and original validation data for this product please contact:
T: 1 (888) 4PTGLAB (1-888-478-4522) (toll free in USA), or 1(312) 455-8498 (outside USA)
E: proteintech@ptglab.com
W: ptglab.com

This product is exclusively available under Proteintech Group brand and is not available to purchase from any other manufacturer.

Données de validation sélectionnées



Jurkat cells were subjected to SDS PAGE followed by western blot with 67478-1-Ig (SET antibody) at dilution of 1:3000 incubated at room temperature for 1.5 hours.