

À des fins de recherche uniquement

# Anticorps Monoclonal anti-SOD1

Numéro de catalogue: 67480-1-Ig

Phare

10 Publications



## Informations de base

<b>Numéro de catalogue:</b> 67480-1-Ig	<b>Numéro d'acquisition GenBank:</b> BC001034	<b>Méthode de purification:</b> Purification par protéine A
<b>Taille:</b> 150ul, Concentration: 1000 µg/ml by Nanodrop and 500 µg/ml by Bradford method using BSA as the standard;	<b>Identification du gène (NCBI):</b> 6647	<b>CloneNo.:</b> 2F10G1
<b>Hôte:</b> Mouse	<b>Nom complet:</b> superoxide dismutase 1, soluble	<b>Dilutions recommandées:</b> WB 1:5000-1:50000 IHC 1:200-1:1000 IF 1:200-1:800
<b>Isotype:</b> IgG2a	<b>MW calculé:</b> 16 kDa	
<b>Immunogen Catalog Number:</b> AG28553	<b>MW observés:</b> 16-20 kDa	

## Applications

### Applications testées:

IF, IHC, WB, ELISA

### Demandes citées:

IF, WB

### Spécificité de l'espèce:

Humain, Lapin, porc, rat, souris

### Espèces citées:

Humain, porc, rat, souris

**Remarque-IHC: il est suggéré de démasquer l'antigène avec un tampon de TE buffer pH 9,0; (\*) A défaut, 'le démasquage de l'antigène peut être 'effectué avec un tampon citrate pH 6,0.**

### Contrôles positifs:

**WB :** cellules HeLa, cellules HEK-293, cellules HepG2, cellules HSC-T6, cellules Jurkat, cellules K-562, tissu cérébral de lapin, tissu cérébral de porc, tissu cérébral de rat, tissu cérébral de souris

**IHC :** tissu de cancer du foie humain, tissu cérébral de rat, tissu cérébral de souris, tissu de cervelet de rat, tissu de cervelet de souris

**IF :** cellules HEK-293T, cellules NIH/3T3

## Informations générales

The enzymatic function of Cu/Zn Superoxide Dismutase (SOD1), previously known as hemocuprein and IPOA, was first characterized in 1969 (PMID: 5389100). SOD1 is commonly known for its ROS scavenging activity, but recent work has uncovered additional roles in modulating metabolism, maintaining redox balance, and regulating transcription. In disease contexts, SOD1 is best-known for its role in a familial form of amyotrophic lateral sclerosis (fALS) (PMID: 10630188). In addition, SOD1 is overexpressed in numerous cancer types, including lung adenocarcinoma, non-small-cell lung cancer, and 70% of primary breast cancers (PMID: 31344643). SOD1 can be detected 24, 32, 40 and 48 kDa by ubiquitination (PMID: 16943203).

## Publications notables

Autrice	Pubmed ID	Journal	Application
Jie Zou	34825483	Thorac Cancer	WB
Jie Jin	34795843	Oxid Med Cell Longev	IF
Pei-Yu Wu	35738116	Phytomedicine	WB

## Stockage

### Stockage:

Stocker à -20°C. Stable pendant un an après l'expédition.

### Tampon de stockage:

PBS avec azoture de sodium à 0,02 % et glycérol à 50 % pH 7,3

L'aliquotage n'est pas nécessaire pour le stockage à -20C

\*\*\* Les 20ul contiennent 0,1% de BSA.

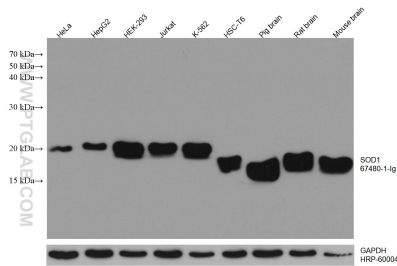
For technical support and original validation data for this product please contact:

T: 1 (888) 4PTGLAB (1-888-478-4522) (toll free in USA), or 1(312) 455-8498 (outside USA)

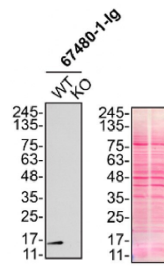
E: proteintech@ptglab.com  
W: ptglab.com

This product is exclusively available under Proteintech Group brand and is not available to purchase from any other manufacturer.

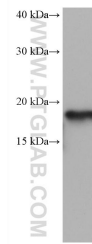
## Données de validation sélectionnées



Various lysates were subjected to SDS PAGE followed by western blot with 67480-1-Ig (SOD1 antibody) at dilution of 1:20000 incubated at room temperature for 1.5 hours. The membrane was stripped and reblotted with HRP-conjugated GAPDH Monoclonal antibody (HRP-60004) as loading control.



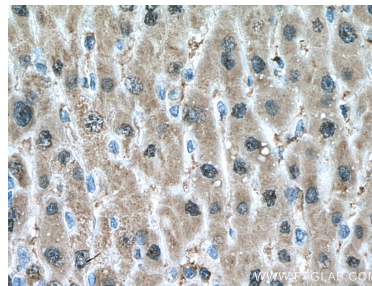
HeLa (WT and SOD1 KO) lysates prepared with RIPA buffer, 20 µg protein loaded. 67480-1-Ig incubated at 1:10000 at 4°C overnight in 5% milk in TBST. Ponceau stained transfers shown on right. Data provided by YCharOS, an open science company with a mission to validate commercial antibodies to improve scientific reproducibility and transparency.



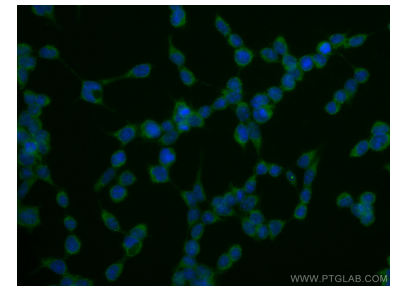
rabbit brain tissue were subjected to SDS PAGE followed by western blot with 67480-1-Ig (SOD1 antibody) at dilution of 1:20000 incubated at room temperature for 1.5 hours.



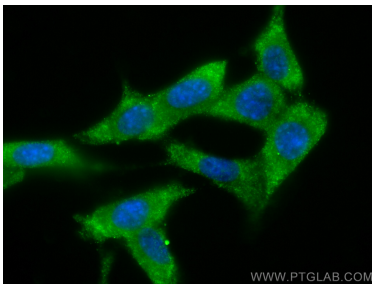
Immunohistochemical analysis of paraffin-embedded human liver cancer tissue slide using 67480-1-Ig (SOD1 antibody) at dilution of 1:1000 (under 10x lens). Heat mediated antigen retrieval with Tris-EDTA buffer (pH 9.0).



Immunohistochemical analysis of paraffin-embedded human liver cancer tissue slide using 67480-1-Ig (SOD1 antibody) at dilution of 1:1000 (under 40x lens). Heat mediated antigen retrieval with Tris-EDTA buffer (pH 9.0).



Immunofluorescent analysis of (-20°C Ethanol) fixed HEK-293T cells using SOD1 antibody (67480-1-Ig, Clone: 2F10G1) at dilution of 1:400 and CoraLite@488-Conjugated AffiniPure Goat Anti-Mouse IgG(H+L).



Immunofluorescent analysis of (-20°C Methanol) fixed NIH/3T3 cells using SOD1 antibody (67480-1-Ig, Clone: 2F10G1) at dilution of 1:800 and CoraLite@488-Conjugated AffiniPure Goat Anti-Mouse IgG(H+L).