

À des fins de recherche uniquement

# Anticorps Monoclonal anti-S100P

Numéro de catalogue: 67485-1-Ig



## Informations de base

Numéro de catalogue: 67485-1-Ig	Numéro d'acquisition GenBank: BC006819	Méthode de purification: Purification par protéine A
Taille: 150ul , Concentration: 2000 µg/ml by Nanodrop and 1000 µg/ml by Bradford method using BSA as the standard;	Identification du gène (NCBI): 6286	CloneNo.: 1G6C3
Hôte: Mouse	Nom complet: S100 calcium binding protein P	Dilutions recommandées: WB 1:1000-1:6000 IHC 1:4000-1:16000
Isotype: IgG2b	MW calculé: 95 aa, 11 kDa	
Immunogen Catalog Number: AG19115	MW observés: 10 kDa	

## Applications

Applications testées: IHC, WB, ELISA	Contrôles positifs: WB : cellules BxPC-3, IHC : tissu de cancer du pancréas humain, tissu de carcinome urothélial humain, tissu placentaire humain
Spécificité de l'espèce: Humain	
<b>Remarque-IHC: il est suggéré de démasquer l'antigène avec un tampon de TE buffer pH 9.0; (*) À défaut, 'le démasquage de l'antigène peut être 'effectué avec un tampon citrate pH 6,0.</b>	

## Informations générales

S100P protein is a relatively small (95 amino acid) isoform of the S100 protein family that was first isolated from human placenta. Overexpression of S100P has been detected in several cancers such as breast, colon, prostate, pancreatic and lung carcinomas, and the protein has been functionally implicated in carcinogenic processes. S100P protein is widely expressed in both normal and neoplastic tissues. It clearly shows ectopic expression in some cancers. Based on the high expression in certain tumors, S100P could represent a potential target for novel diagnostic and therapeutic applications.

## Stockage

Stockage:  
Stocker à -20 °C.  
Tampon de stockage:  
PBS avec azoture de sodium à 0,02 % et glycérol à 50 % pH 7,3  
L'aliquotage n'est pas nécessaire pour le stockage à -20C

\*\*\* Les 20ul contiennent 0,1% de BSA.

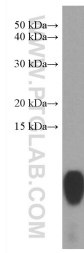
For technical support and original validation data for this product please contact:

T: 1 (888) 4PTGLAB (1-888-478-4522) (toll free  
in USA), or 1(312) 455-8498 (outside USA)

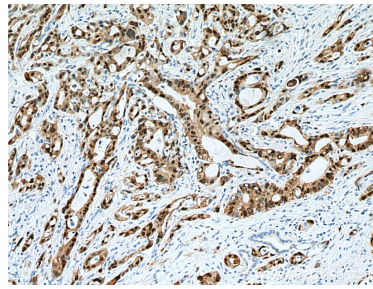
E: proteintech@ptglab.com  
W: ptglab.com

This product is exclusively available under Proteintech Group brand and is not available to purchase from any other manufacturer.

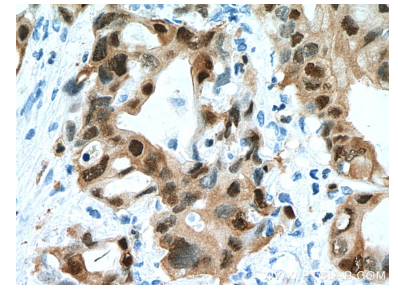
## Données de validation sélectionnées



BXPC-3 cells were subjected to SDS PAGE followed by western blot with 67485-1-Ig (S100P antibody) at dilution of 1:3000 incubated at room temperature for 1.5 hours.



Immunohistochemical analysis of paraffin-embedded human pancreas cancer tissue slide using 67485-1-Ig (S100P antibody) at dilution of 1:8000 (under 10x lens). Heat mediated antigen retrieval with Tris-EDTA buffer (pH 9.0).



Immunohistochemical analysis of paraffin-embedded human pancreas cancer tissue slide using 67485-1-Ig (S100P antibody) at dilution of 1:8000 (under 40x lens). Heat mediated antigen retrieval with Tris-EDTA buffer (pH 9.0).