

À des fins de recherche uniquement

# Anticorps Monoclonal anti-PRKACA

Numéro de catalogue: 67491-1-Ig Phare



## Informations de base

<b>Numéro de catalogue:</b> 67491-1-Ig	<b>Numéro d'acquisition GenBank:</b> BC039846	<b>Méthode de purification:</b> Purification par protéine A
<b>Taille:</b> 150ul , Concentration: 800 µg/ml by Nanodrop and 500 µg/ml by Bradford method using BSA as the standard;	<b>Identification du gène (NCBI):</b> 5566	<b>CloneNo.:</b> 4G10D7
<b>Hôte:</b> Mouse	<b>Nom complet:</b> protein kinase, cAMP-dependent, catalytic, alpha	<b>Dilutions recommandées:</b> WB 1:1000-1:6000 IHC 1:500-1:2000
<b>Isotype:</b> IgG2a	<b>MW calculé</b> 41 kDa	
<b>Immunogen Catalog Number:</b> AG26400	<b>MW observés:</b> 38-43 kDa	

## Applications

### Applications testées:

IHC, WB, ELISA

### Spécificité de l'espèce:

Humain, rat, souris

**Remarque-IHC: il est suggéré de démasquer l'antigène avec un tampon de TE buffer pH 9.0; (\*) À défaut, le démasquage de l'antigène peut être effectué avec un tampon citrate pH 6,0.**

### Contrôles positifs:

WB : cellules HeLa, cellules HepG2, cellules HSC-T6, cellules Jurkat, cellules K-562, cellules LNCaP, cellules NIH/3T3

IHC : tissu de cancer du sein humain, tissu de cancer de la prostate humain

## Informations générales

PRKACA, also named as PKACA and PKA C-alpha, belongs to the protein kinase superfamily. AGC Ser/Thr protein kinase family and cAMP subfamily. It phosphorylates a large number of substrates in the cytoplasm and the nucleus.

## Stockage

### Stockage:

Stocker à -20 °C.

### Tampon de stockage:

PBS avec azoture de sodium à 0,02 % et glycérol à 50 % pH 7,3

L'aliquotage n'est pas nécessaire pour le stockage à -20C

\*\*\* Les 20ul contiennent 0,1% de BSA.

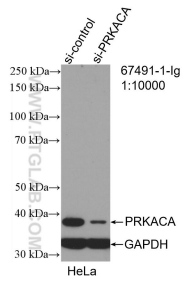
For technical support and original validation data for this product please contact:

T: 1 (888) 4PTGLAB (1-888-478-4522) (toll free in USA), or 1(312) 455-8498 (outside USA)

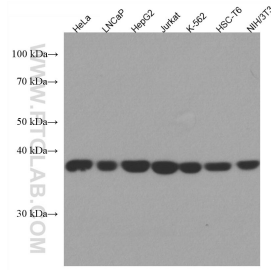
E: proteintech@ptglab.com  
W: ptglab.com

This product is exclusively available under Proteintech Group brand and is not available to purchase from any other manufacturer.

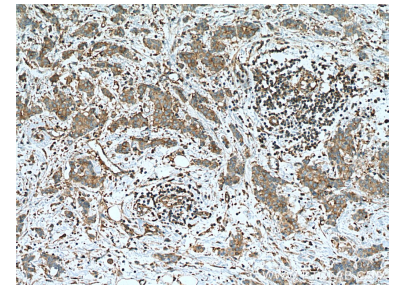
## Données de validation sélectionnées



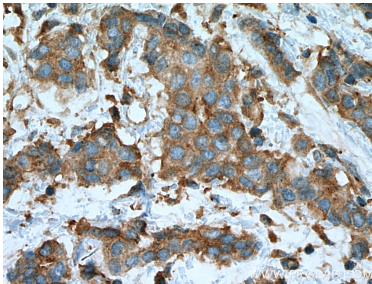
WB result of PRKACA antibody (67491-1-Ig; 1:10000; incubated at room temperature for 1.5 hours) with sh-Control and sh-PRKACA transfected HeLa cells.



Various lysates were subjected to SDS PAGE followed by western blot with 67491-1-Ig (PRKACA antibody) at dilution of 1:2300 incubated at room temperature for 1.5 hours.



Immunohistochemical analysis of paraffin-embedded human breast cancer tissue slide using 67491-1-Ig (PRKACA antibody) at dilution of 1:1000 (under 10x lens). Heat mediated antigen retrieval with Tris-EDTA buffer (pH 9.0).



Immunohistochemical analysis of paraffin-embedded human breast cancer tissue slide using 67491-1-Ig (PRKACA antibody) at dilution of 1:1000 (under 40x lens). Heat mediated antigen retrieval with Tris-EDTA buffer (pH 9.0).