

À des fins de recherche uniquement

Anticorps Monoclonal anti-EEF1A1

Numéro de catalogue: 67495-1-Ig **2 Publications**



Informations de base

Numéro de catalogue: 67495-1-Ig	Numéro d'acquisition GenBank: BC014224	Méthode de purification: Purification par protéine A
Taille: 150ul , Concentration: 1100 µg/ml by Nanodrop and 500 µg/ml by Bradford method using BSA as the standard;	Identification du gène (NCBI): 1915	CloneNo.: 1A9F5
Hôte: Mouse	Nom complet: eukaryotic translation elongation factor 1 alpha 1	Dilutions recommandées: WB 1:5000-1:50000 IHC 1:150-1:600 IF 1:50-1:500
Isotype: IgG1	MW calculé 462 aa, 50 kDa	
Immunogen Catalog Number: AG1938	MW observés: 49 kDa	

Applications

Applications testées:
FC, IF, IHC, WB, ELISA

Demandes citées:
IP, WB

Spécificité de l'espèce:
Humain, rat, souris

Espèces citées:
Humain

Remarque-IHC: il est suggéré de démasquer l'antigène avec un tampon de TE buffer pH 9,0; (*) A défaut, 'le démasquage de l'antigène peut être 'effectué avec un tampon citrate pH 6,0.

Contrôles positifs:

WB : cellules HeLa, cellules 4T1, cellules HEK-293, cellules HepG2, cellules HSC-T6, cellules Jurkat, cellules K-562, cellules NIH/3T3, cellules PC-12

IHC : tissu de cancer du pancréas humain, tissu cérébral de souris

IF : cellules HepG2,

Informations générales

EEF1A1, also named as EEF1A, EF1A and LENG7, belongs to the GTP-binding elongation factor family. This protein promotes the GTP-dependent binding of aminoacyl-tRNA to the A-site of ribosomes during protein biosynthesis. It is a typical housekeeping gene product required for the maintenance of cell proliferation and/or survival. In addition, EEF1A1 protects the aminoester bond against hydrolysis until a correct match between the codon on mRNA and the anti-codon on tRNA can be achieved.

Publications notables

Autrice	Pubmed ID	Journal	Application
Yingjie Hou	35036957	STAR Protoc	WB,IP
Yingjie Hou	34478637	Cell Chem Biol	WB

Stockage

Stockage:

Stocker à -20°C. Stable pendant un an après l'expédition.

Tampon de stockage:

PBS avec azoture de sodium à 0,02 % et glycérol à 50 % pH 7,3

L'aliquotage n'est pas nécessaire pour le stockage à -20C

*** Les 20ul contiennent 0,1% de BSA.

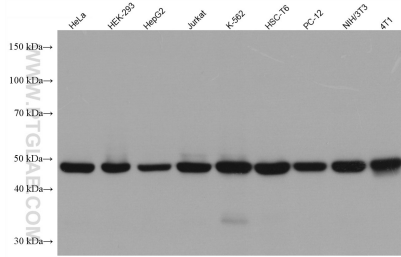
For technical support and original validation data for this product please contact:

T: 1 (888) 4PTGLAB (1-888-478-4522) (toll free in USA), or 1(312) 455-8498 (outside USA)

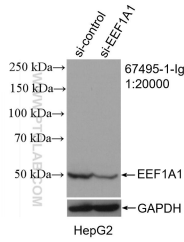
E: proteintech@ptglab.com
W: ptglab.com

This product is exclusively available under Proteintech Group brand and is not available to purchase from any other manufacturer.

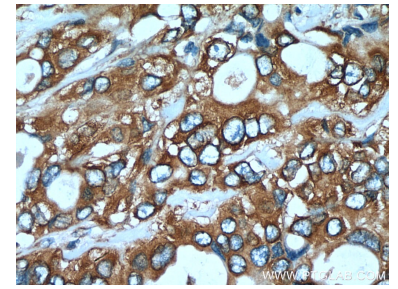
Données de validation sélectionnées



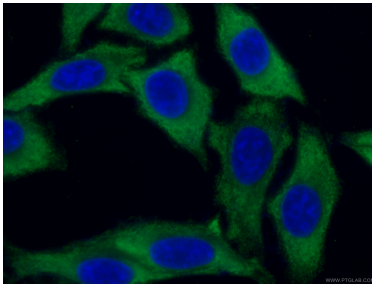
Various lysates were subjected to SDS PAGE followed by western blot with 67495-1-Ig (EEF1A1 antibody) at dilution of 1:10000 incubated at room temperature for 1.5 hours.



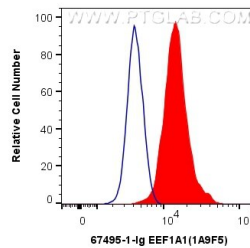
WB result of EEF1A1 antibody (67495-1-Ig; 1:20000; incubated at room temperature for 1.5 hours) with sh-Control and sh-EEF1A1 transfected HepG2 cells.



Immunohistochemical analysis of paraffin-embedded human pancreas cancer tissue slide using 67495-1-Ig (EEF1A1 antibody) at dilution of 1:300 (under 40x lens). Heat mediated antigen retrieval with Tris-EDTA buffer (pH 9.0).



Immunofluorescent analysis of (-20°C Ethanol) fixed HepG2 cells using 67495-1-Ig (EEF1A1 antibody), at dilution of 1:200 and CoraLite®488-Conjugated AffiniPure Goat Anti-Mouse IgG(H+L).



1X10⁶ HepG2 cells were intracellularly stained with 0.4 ug Anti-Human EEF1A1 (67495-1-Ig, Clone:1A9F5) and CoraLite®488-Conjugated AffiniPure Goat Anti-Mouse IgG(H+L) at dilution 1:1000 (red), or 0.4 ug Mouse IgG1 Isotype Control (MOPC-21) (65124-1-Ig, Clone: MOPC-21) (blue). Cells were fixed with 4% PFA and permeabilized with Flow Cytometry Perm Buffer (PF00011-C).