

À des fins de recherche uniquement

# Anticorps Monoclonal anti-GNB3

Numéro de catalogue: 67497-1-Ig



## Informations de base

<b>Numéro de catalogue:</b> 67497-1-Ig	<b>Numéro d'acquisition GenBank:</b> BC002454	<b>Méthode de purification:</b> Purification par protéine G
<b>Taille:</b> 150ul , Concentration: 2000 µg/ml by Nanodrop and 1000 µg/ml by Bradford method using BSA as the standard;	<b>Identification du gène (NCBI):</b> 2784	<b>CloneNo.:</b> 2B6E1
<b>Hôte:</b> Mouse	<b>Nom complet:</b> guanine nucleotide binding protein (GWB 1:1000-1:6000 protein), beta polypeptide 3	<b>Dilutions recommandées:</b> IHC 1:500-1:2000 IF 1:200-1:800
<b>Isotype:</b> IgG1	<b>MW calculé:</b> 37 kDa	
<b>Immunogen Catalog Number:</b> AG7050	<b>MW observés:</b> 35-37 kDa	

## Applications

### Applications testées:

IF, IHC, WB, ELISA

### Spécificité de l'espèce:

Humain, porc, rat, souris

**Remarque-IHC: il est suggéré de démasquer l'antigène avec un tampon de TE buffer pH 9,0; (\*) À défaut, le démasquage de l'antigène peut être effectué avec un tampon citrate pH 6,0.**

### Contrôles positifs:

WB : tissu cérébral de porc, cellules HepG2, cellules L02, tissu cérébral de rat, tissu cérébral de souris, tissu rétinien de rat

IHC : tissu de cancer du foie humain,

IF : cellules HepG2,

## Informations générales

Guanine nucleotide-binding proteins (g proteins) are involved as a modulator or transducer in various transmembrane signaling systems, by integrating signals between receptors and effector proteins. G proteins are composed of an alpha, a beta, and a gamma subunit. This gene encodes a 34 kd beta subunit, being expressed in all tissues. Beta subunits are important regulators of alpha subunits, as well as of certain signal transduction receptors and effectors.

## Stockage

### Stockage:

Stocker à -20 °C.

### Tampon de stockage:

PBS avec azoture de sodium à 0,02 % et glycérol à 50 % pH 7,3

L'aliquotage n'est pas nécessaire pour le stockage à -20C

\*\*\* Les 20ul contiennent 0,1% de BSA.

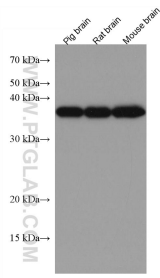
For technical support and original validation data for this product please contact:

T: 1 (888) 4PTGLAB (1-888-478-4522) (toll free  
in USA), or 1(312) 455-8498 (outside USA)

E: proteintech@ptglab.com  
W: ptglab.com

This product is exclusively available under Proteintech Group brand and is not available to purchase from any other manufacturer.

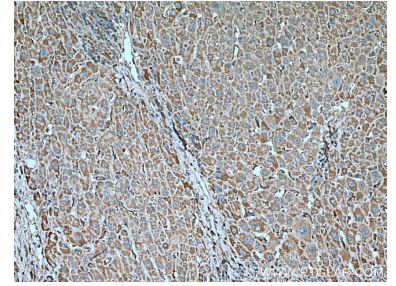
## Données de validation sélectionnées



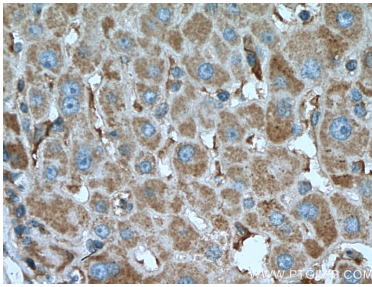
Various lysates were subjected to SDS PAGE followed by western blot with 67497-1-Ig (GNB3 antibody) at dilution of 1:3000 incubated at room temperature for 1.5 hours.



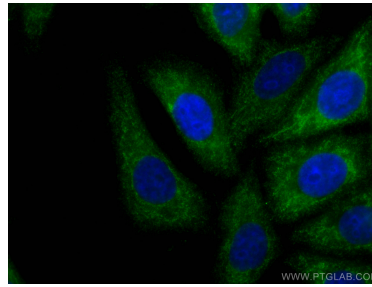
L02 cells were subjected to SDS PAGE followed by western blot with 67497-1-Ig (GNB3 antibody) at dilution of 1:3000 incubated at room temperature for 1.5 hours.



Immunohistochemical analysis of paraffin-embedded human liver cancer tissue slide using 67497-1-Ig (GNB3 antibody) at dilution of 1:1000 (under 10x lens). Heat mediated antigen retrieval with Tris-EDTA buffer (pH 9.0).



Immunohistochemical analysis of paraffin-embedded human liver cancer tissue slide using 67497-1-Ig (GNB3 antibody) at dilution of 1:1000 (under 40x lens). Heat mediated antigen retrieval with Tris-EDTA buffer (pH 9.0).



Immunofluorescent analysis of (-20°C Ethanol) fixed HepG2 cells using GNB3 antibody (67497-1-Ig, Clone: 2B6E1) at dilution of 1:400 and Coralite® 488-Conjugated AffiniPure Goat Anti-Mouse IgG(H+L).